



Singita

MILELE

SERENGETI, TANZANIA

“A Singita experience leaves guests with a deeper understanding of the wonders of Africa, and an appreciation for our rare and magnificent wildlife.”

**- LUKE BAILES
FOUNDER & EXECUTIVE CHAIRMAN**

Table of contents

AN ENDURING COMMITMENT TO SAFEGUARDING AFRICA’S WILD PLACES AND WILDLIFE	3
INSPIRED BY CONSERVATION & COMMUNITY	4
WELCOME TO SINGITA MILELE	5
THE PERFECT HIDEAWAY	6
GUEST SUITES	7
MASTER SUITE THE JOURNEY SUITE	8
THE PRIDE SUITE	9
THE COALITION SUITE	10
THE DAZZLE SUITE	11
THE CRASH SUITE	12
VILLA FACILITIES	13
THE MILELE EXPERIENCE	14
SINGITA PRIVATE VILLA COLLECTION	15
PREPARING FOR YOUR JOURNEY	16
OUR LOCATION	17
GETTING TO SINGITA MILELE	18
A LUXURY EXPERIENCE IN THE HEART OF AFRICA	19
WEATHER AND TEMPERATURE	20

AN ENDURING COMMITMENT TO safeguarding Africa's wild places and wildlife

Singita is a pioneering eco-tourism brand that has been at the forefront of sustainably driven luxury travel for 30 years.

Our exceptional safari offering, across four countries and 16 award-winning lodges and camps encompasses a wide range of experiences, all of which are underpinned by our 100-year purpose to preserve the land under our care.

By playing a role in protecting these wilderness areas, and the spectrum of life they contain through an abiding and driving commitment to conservation, we endeavour to create a legacy that protects the landscape, safeguards the wildlife, and supports the communities who exist in this ecosystem together, ensuring that future generations too can benefit from this precious natural heritage.

Limited guest and vehicle numbers, excellent game viewing and personalised service are complemented by the passionate care, commitment to excellence and sense of community that our teams uphold.

Guests who stay at Singita are forever changed, not merely as a result of the awe they feel on encountering the raw natural beauty of our remote locations, but because of the sense of connection they encounter, and the feeling of wholeness they leave with.



“Singita’s ethos of ‘touching the Earth lightly’ is no longer just a forward-thinking principle; it is imperative to our survival, and that of the land, wildlife and communities under our care.”

- INGE KOTZE
GENERAL MANAGER CONSERVATION



INSPIRED BY conservation & community

Working with non-profit Funds and Trusts, who implement strategic initiatives and projects in each region, we remain true to our fundamental conservation principles and our goal to create exceptional experiences driven by purpose.

The work done by these Funds and Trusts is guided by a goal of restoring, protecting, and ultimately expanding the biodiversity of the ecosystems that make up our reserves and concessions. Our model of sustainable ecotourism is designed to support and further these initiatives.

GRUMETI FUND

In Tanzania, Singita partners with the Grumeti Fund, a non-profit organization carrying out wildlife conservation and community development work in the western corridor of the Serengeti ecosystem, where Singita Milele is situated. The Grumeti Fund works tirelessly to ensure the long-term sustainability of the 350,000 acre Singita Grumeti and their vision is a world in which people and wildlife live together sustainably, forever.

WELCOME TO *Singita Milele*

Surrounded by uninterrupted views of the Serengeti and enjoying a secluded setting on the slopes of Sasakwa Hill, Singita Milele's expansive configuration offers the most exceptional new opportunity to experience this wilderness in full.

This exclusive-use villa features five individually designed en-suite guest suites inspired by some of Africa's most celebrated wildlife species – complete with terraces, lounges, dressing rooms, outdoor showers, and more. Communal areas include a movie room, fully-equipped fitness centre, jacuzzis, and an outdoor sala.

From a quintessential boma and firepit for starlit evenings recollecting the adventures of the day, to a large infinity swimming pool with incredible views, as well as perfectly placed swivel chairs to allow for continuous game viewing throughout your stay – every element and feature of this magnificent villa has been planned down to the last detail to make the most of its iconic location.

Set in 350,000 acres of pristine wilderness in the world-renowned Grumeti Reserve in northern Tanzania, this rare retreat offers a front row seat to the Great Migration – as well as countless other game-viewing experiences all year round.



OPENS MAY 2024

Privacy and exclusivity - the perfect hideaway

Perfect for a family or friends traveling together. Experience a truly private and exclusive safari in the Serengeti for up to 10 guests.

The Singita Milele is a contemporary take on African Safari design- sophisticated yet comfortable. It has five elegant, spacious guest suites. Each of the suites is uniquely designed and named for a specific group of wild animals found in Tanzania and that you will most likely encounter on your game drives.

Days are spent on early morning and late afternoon game drives, experiencing some of the best game viewing on offer in the iconic Serengeti. Between game drives, relax at the magnificent infinity swimming pool that overlooks the Serengeti plains or one of four separate jacuzzis. You can also enjoy a rejuvenating wellness treatment or exercise in the fully equipped private on-site fitness centre.

Singita Milele is perfect for special celebrations for groups of friends and family.



Guest Suites

Singita Milele features five completely distinct suites. While adhering to the same overall look & feel of this one-of-a-kind property, each individually designed suite draws inspiration from one of the Serengeti's iconic wildlife species. Named the collective nouns of giraffe, lion, cheetah, zebra, and rhino – they are exquisitely decorated to portray the energy and raw visual appeal of these magnificent animals. Featuring the epitome of Africa's style & design and locally sourced craftsmanship, each room also celebrates the continent's inspiring creative energy and vision.

SUITES LOCATED IN THE MAIN VILLA AREA

- The Journey Suite (Master Suite)
- The Pride Suite
- The Coalition Suite

SUITES LOCATED ALONGSIDE THE MAIN AREA

- The Dazzle Suite
- The Crash Suite



MASTER SUITE

The Journey Suite

light & lithe with tall legs moving slowly through the savannahs and grasslands

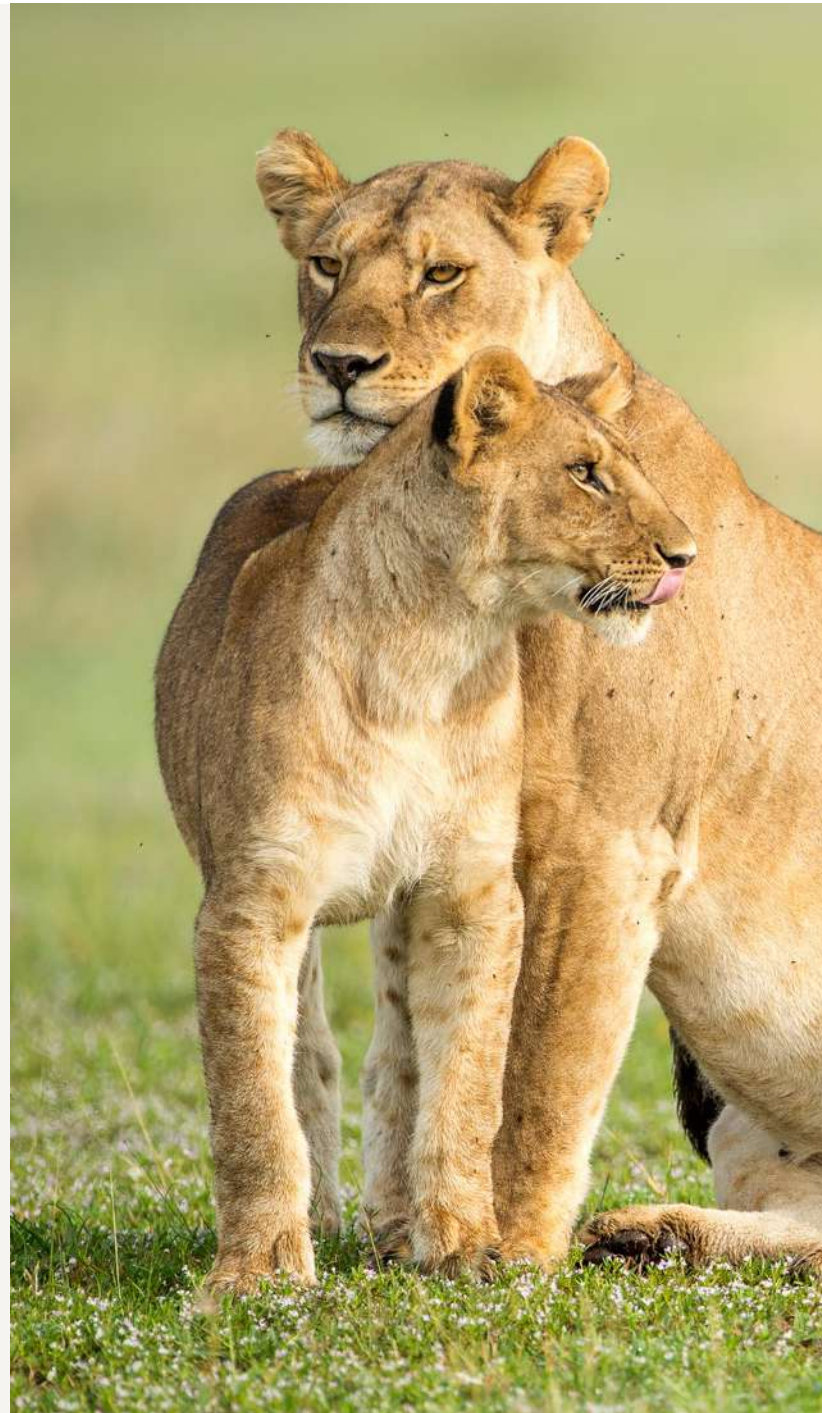
- Various spaces in which guests can relax, recline and soak up the magnificent savannah views.
- Two expansive bathrooms with separate dressing rooms, floor-mounted heated towel rails, pendant bathtubs, roller blinds, outdoor showers and floor-to-ceiling glass doors opening onto expansive decks.
- An oversized bedroom with ottomans, occasional chairs and a lounge area opening onto an outdoor terrace with loungers, chaise lounges, and arm chairs.
- A study with a writing desk, sofa, floor lamp, desk chair and bar-deli.



The Pride Suite

a portrayal in strength, proportion and tone warm yellows and oranges with grounding weaves and metal

- A spacious en-suite bedroom featuring a large bathroom that offers spectacular views, a large pendant bath, floor-mounted heated towel rails, and an outdoor shower and deck.
- There's also a large dressing room, and the bedroom opens onto a lounge area with easy chairs, coffee and side tables.
- The indoor lounge spills onto an outdoor terrace which is exquisitely furnished with outdoor sofas, armchairs, side tables, floor lamps, and more – all maximising this magnificent location and ensuring that guests can continuously engage with the wilderness and wildlife right outside their suite.



The Coalition Suite

capturing a sense of movement and delicate swiftness, earthy textures and tones merge with warm wood, clay and natural materials

- A spacious en-suite bedroom with a large bathroom that offers spectacular views, a large pendant bath, floor-mounted heated towel rails, outdoor shower and more.
- There's also a large dressing room, and the bedroom opens onto a lounge area with easy chairs, coffee and side tables.
- The indoor lounge spills onto an outdoor terrace which is exquisitely furnished with outdoor sofas, armchairs, side tables, floor lamps, and more – all maximising this magnificent location and ensuring that guests can continuously engage with the wilderness and wildlife right outside their suite.



The Dazzle Suite

a purposeful paradox of bold and subtle contrasting dark charcoals & deep ochres and orange with rich yellow grass

- A spacious en-suite bedroom with a large bathroom that offers its own outside area, spectacular views, a large pendant bath, floor-mounted heated towel rails, outdoor shower and more.
- A large walk-in dressing room connects the bedroom with the spacious bathroom.
- The bedroom opens onto an outdoor terrace with comfortable furnishings – all overlooking the magnificent scenery and ensuring that guests can continuously engage with the wilderness & wildlife right outside their suite.
- The suite also features a beautifully appointed separate study with a dedicated desk area and an indoor lounge area with easy chairs, coffee and side tables.



The Crash Suite

gravitas and weight, rich leather, textured grass, yellows & natural tone

- A spacious en-suite bedroom with a large bathroom that offers spectacular views, a large pendant bath, floor-mounted heated towel rails, outdoor shower and more.
- The bedroom includes an indoor lounge area with easy chairs, coffee and side tables.
- Large floor-to-ceiling glass doors open onto an outdoor terrace with comfortable furnishings – all overlooking the magnificent scenery and ensuring that guests can continuously engage with the wilderness & wildlife right outside their suite.



Villa facilities

KEY FEATURES

- Accommodation for up to 10 guests.
- Five guest suites - a spacious master bedroom suite, two other large private suites, including a junior master suite, and a two bedroom family suite perfect for adults with children.
- Spacious interior lounges with fireplaces, dining areas, floor-to-ceiling windows with breathtaking views, sitting areas, and writing desks.
- Expansive outdoor lounges with external fireplaces, fully stocked bars, dining areas, daybeds, loungers and a pool table.
- A spacious living/dining area, kitchen, 10 person movie room, and fully equipped fitness centre.
- Full time dedicated staff including a Field Guide, chef, a butler and housekeeping team.
- World class IT throughout the villa to ensure seamless and uninterrupted WiFi connectivity.
- A beautiful infinity pool overlooking the Serengeti plains and four separate jacuzzis.
- Indoor and outdoor fireplaces and fire pits.
- Boma with outdoor covered kitchen for outdoor gatherings.



The Milele experience

ON-SITE ACTIVITIES

- Daily morning and afternoon game drives with your dedicated Field Guide.
- Afternoon drives conclude with an evening return revealing the elusive magic of nocturnal Africa.
- For the adventurous, there are guided walking safaris (for guests 16 and older).
- 10-person movie room and a fully equipped fitness centre.
- Stargazing, swimming and board games.
- Join in a community visit - it's a meaningful way to experience Tanzanian culture and learn about the positive impact that tourism has made in the region.

A UNIQUE GAME-VIEWING EXPERIENCE

During your stay you are likely to see a great variety of wildlife, including:

- | | | | |
|-----------------|------------------|-----------|------------------|
| • bat-eared fox | • Colobus monkey | • gazelle | • Maasai giraffe |
| • buffalo | • eland | • leopard | • topi |
| • cheetah | • elephant | • lion | • wildebeest |



SINGITA PRIVATE VILLA COLLECTION

The ultimate expression of Singita's exclusive offering

Singita's properties are known as the hallmark of high-end ecotourism in Africa among travellers who value the most remote and iconic wilderness spaces, an unrivalled guest experience and complete privacy – and the Private Villa Collection is the epitome of its offering.

From the vast plains of the Serengeti to South Africa's riverine forests and iconic bushveld, and from Zimbabwe's rugged sandstone ridges to Rwanda's majestic Virunga mountains – each of these private-use properties offer guests their own remote sanctuary within which to share coveted experiences with loved ones, and the chance to create memories that will last a lifetime.





Preparing for your journey

SUGGESTED PACKING GUIDE

Cotton clothing in neutral colours such as green, khaki and grey is recommended for game drives and bush walks. It is advisable to avoid white and dark colours as they tend to attract bugs. If it rains during a game drive, waterproof ponchos will be provided. No formal wear is required at any of our lodges.

Use the weather as your guide:

- **October – April:**
Casual summer clothing (shorts and lightweight shirts) with a warm jersey or sweater for the cooler morning and evening temperatures.
- **May – September:**
Casual lightweight clothing with a very warm parka or windbreaker jacket for the very cold mornings and nights.

To ensure a comfortable safari experience, we recommend that you bring the following:

- Comfortable walking or track shoes, or hiking boots for walks as well as sandals to wear around the villa.
- Activewear if you plan on using the facilities at the fitness centre or your private in-room fitness area.
- A swimming costume or bathing suit, sun block, sun hat, sunglasses, lip balm, mosquito repellent. (Lip balm and insect repellent will be provided, but if you prefer a particular brand, you are welcome to bring it along.)
- Video camera, camera, binoculars and extra memory cards.

HEALTH REQUIREMENTS

Please consult your doctor or physician before travelling.

- Singita Milele is situated in a malaria-risk area. It is therefore essential that you consult your medical practitioner regarding anti-malaria requirements prior to your trip.
- Vaccinations: Guests are strongly advised to check the latest information with regard to vaccinations for travel to Tanzania with their local travel clinic or travel agent.

Our location

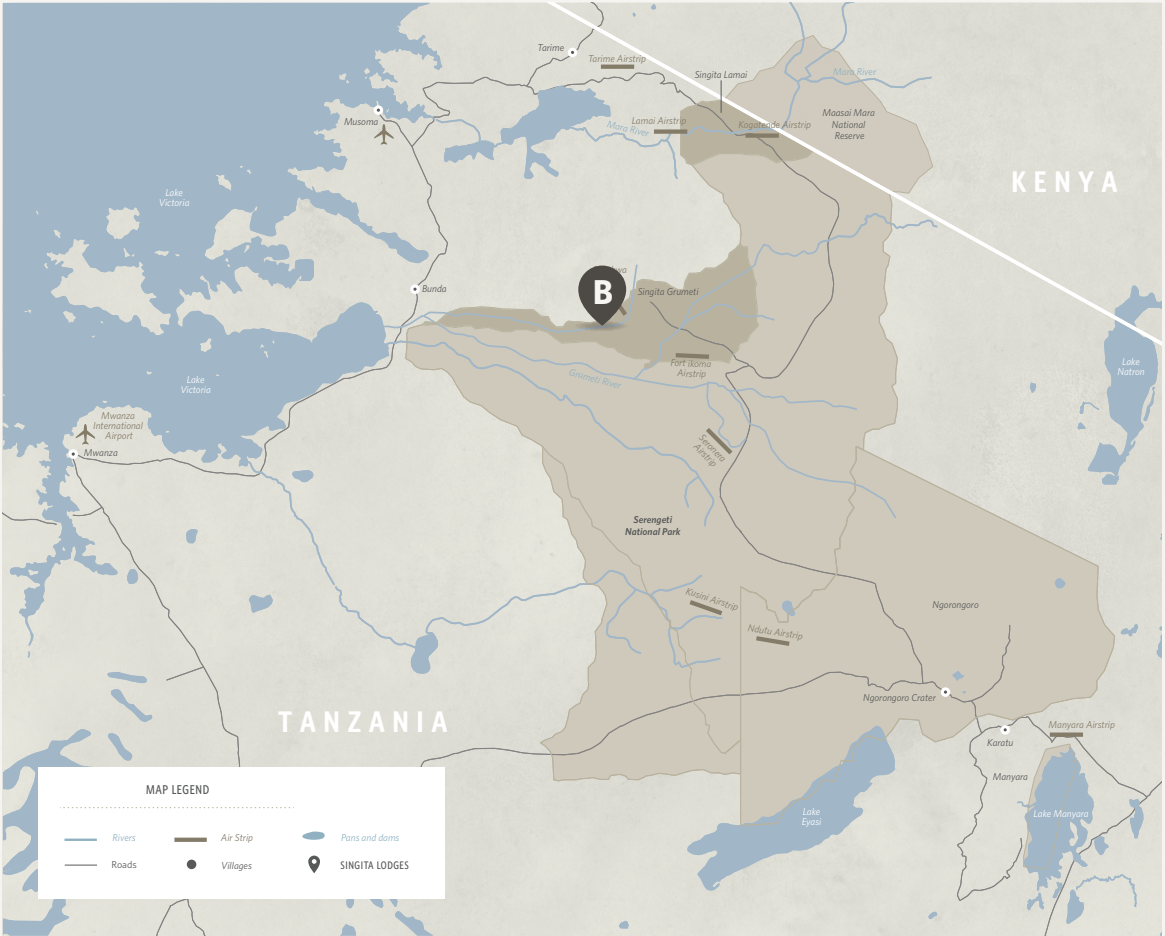


LOCATION OF SINGITA GRUMETI [A]

Spanning over 350,000 acres of untouched wilderness, Singita Grumeti is located in northern Tanzania, forming part of the Serengeti Mara ecosystem. Singita Grumeti offers visitors a front-row seat to the Great Migration as well as countless other wildlife experiences all year around. With a landscape that combines grassy plains with riverine forests and thorny scrubland, the area is home to a huge variety and vast number of big game and other iconic African animals.

LOCATION OF SINGITA MILELE [B]

Surrounded by uninterrupted views of the Serengeti and enjoying a secluded setting on the slopes of Sasakwa Hill, Singita Milele's expansive configuration offers the most exceptional new opportunity to experience this wilderness in full. Set in 350,000 acres of pristine wilderness in the world-renowned Grumeti Reserve in northern Tanzania, this rare retreat offers guests exclusive encounters on the annual wildebeest migration route in the Serengeti.



GETTING TO Singita Milele

BY AIR

We can arrange scheduled flights or private charters. All flights land at the Singita Sasakwa airstrip in the Grumeti Reserve. For detailed information and bookings, please contact Singita Reservations.

- On scheduled flights, the weight of luggage is restricted to 15 kg (33 lb) for checked baggage.
- On arrival, guests are met by a Singita staff member and driven to Milele.
- Private aircraft pilots land at their own risk and must adhere to strict aviation protocols.

FLIGHT DURATION

- Kilimanjaro International Airport – Singita: approximately 1 hour 15 minutes (if direct)
- Arusha Airport – Singita: approximately 1 hour (if direct)



A LUXURY EXPERIENCE in the heart of Africa

Every creature comfort is taken care of with these well-considered amenities and services:

- Private game vehicles, Field Guides, and a full staff complement including butlers, hosts and chefs
- Private fine dining and meals on request
- Tailormade wine tastings and a fully stocked cellar with award-winning wines
- Massage treatments on decks and in suites
- Expansive living spaces, kitchen & various fully stocked 'bar-delis' with freshly made delicacies all day
- Restorative wellness experiences enveloped by nature – including yoga & meditation
- Main area large infinity swimming pool
- Wellness sala
- Jacuzzis
- Fully equipped fitness centre
- 10-person movie room
- The Singita Boutique & Gallery at the nearby Singita Sasakwa Lodge
- Televisions in each suite
- Children of all ages are welcome and babysitting services are available
- Tailormade activities to suit each group or family (children's participation in game activities is at the discretion of guides)
- Please note that there are no Kosher or Halaal facilities at Singita Milele





Weather and temperature

BEST TIME TO GO ON SAFARI

East Africa is equatorial, so the climate is fairly constant, making Singita Grumeti a perfect year-round destination. The Green Season, from November to May, offers long, warm days with short downpours of rain, which transforms the landscape into lush green grasslands teeming with diverse wildlife. June to October is traditionally the migration season, when the days are warm, sunny and dry.

AVERAGE SEASONAL TEMPERATURE RANGES

SPRING	SUMMER	AUTUMN	WINTER
(Sept - Nov)	(Dec - Feb)	(March - May)	(June - Aug)
Low 20 °C / 68 °F	Low 23 °C / 73 °F	Low 22 °C / 72 °F	Low 18 °C / 64 °F
High 30 °C / 86 °F	High 31 °C / 88 °F	High 31°C / 88 °F	High 29 °C / 84 °F

The above temperatures are monthly averages. The actual daily temperatures may differ from these.

Whether standing in awe of the Great Migration, experiencing the African wilderness with loved ones or finding relief and escape from everyday life, this epic landscape and the astonishing diversity of animals within it will leave you humbled and restored.





Tel +27 21 683 3424
enquiries@singita.com
www.singita.com

Lodges and Camps across 4 countries in Africa

SOUTH AFRICA

Kruger National Park: Singita Lebombo and Sweni Lodges

Sabi Sand: Singita Castleton, Boulders and Ebony Lodges

TANZANIA

Grumeti: Singita Milele, Sasakwa Lodge, Sabora Tented Camp, Faru Faru Lodge, Serengeti House and Explore

Lamai: Singita Mara River Tented Camp

ZIMBABWE

Malilangwe Wildlife Reserve:
Singita Pamushana Lodge and Malilangwe House

RWANDA

Volcanoes National Park:
Singita Kwitonda Lodge and Kataza House