

Singita

CASTLETON

SABI SAND, SOUTH AFRICA

“A Singita experience leaves guests with a deeper understanding of the wonders of Africa, and an appreciation for our rare and magnificent wildlife.”

**- LUKE BAILES
FOUNDER & EXECUTIVE CHAIRMAN**

Table of contents

AN ENDURING COMMITMENT TO safeguarding Africa's wildlife & wilderness

Singita is a conservation and ecotourism brand that has been helping to preserve Africa's untouched natural spaces for almost three decades and we offer guests exceptional safari experiences at 16 award-winning lodges and camps across four countries.

In partnership with non-profit Funds & Trusts who implement strategic conservation projects in each of the regions in which we operate, our 100-year purpose is to preserve and protect large parts of African wilderness for future generations.

We are steadfast in our commitment to protect unique ecosystems, help recover critically endangered species and ensure no further extinction, benefit neighbouring communities under our care, and contribute positively to the reduction of GHG emissions through our climate commitments.

Travellers choose to stay at Singita because of the expansive space and beauty of our remote locations. They value the restorative serenity of these pristine wilderness areas, as well as the limited guest and vehicle numbers, extraordinarily consistent game viewing and exceptional & intuitive care that is taken of each guest during their stay. When they depart, they are transformed for life and deeply moved by their connection and contribution to the legacy of this continent.



“Singita’s ethos of ‘touching the Earth lightly’ is no longer just a forward-thinking principle; it is imperative to our survival, and that of the land, wildlife and communities under our care.”

**- INGE KOTZE
GENERAL MANAGER CONSERVATION**



CONSERVATION as a way of life

Singita has been championing conservation in Africa from its inception.

The critical conservation work we carry out with our non-profit Funds & Trusts is aimed at restoring, enhancing and protecting the biodiversity of the ecosystems under our care. Our sustainable conservation model helps to balance tourism in all of the regions in which we operate.

SINGITA LOWVELD TRUST

In South Africa, the Singita Lowveld Trust manages a wide range of conservation projects in Singita Sabi Sand and Singita Kruger National Park – from anti-poaching initiatives to wildlife research & land management, sustainability efforts and community partnership projects such as early childhood development, digital learning and a world-class culinary school.

WELCOME TO Singita Castleton

Reminiscent of an African farmhouse, Singita Castleton is designed for exclusive use and the beautiful stone-walled homestead and six double en-suite cottages are perfect for families and friends.

The full staff complement includes a Field Guide, chef and host and amenities like a fully equipped fitness centre, tennis court, spa treatment room, wine cellar and country-style kitchen accommodate every preference.

Situated in the world-renowned Sabi Sand, it features relaxed and understated interiors imbued with nostalgic references. Castleton captures the spirit and history of the original camp, and tartans, ticking stripes and faded botanical-print fabrics blend in with leather, wood and wicker furniture, lending a rustic-chic atmosphere to the lodge.

Many of the antiques and original furnishings have been refashioned, adding authenticity to comforting living spaces that extend outdoors onto deep, furnished verandas overlooking tree-shaded lawns and an expansive swimming pool. The park-like gardens overlook a watering hole where animals regularly gather to drink.



The Castleton experience

ACCOMMODATION

Singita Castleton's six double en-suite guest cottages are located a short distance from the main house.

Two of the cottages have an inter-leading door, making them perfect for families with young children.

ACTIVITIES

- Daily game drives with a private guide and tracker.
- Afternoon drives, concluding with spot-lit evening returns to reveal the elusive magic of the area's nocturnal wildlife.
- Guided safari walks (for guests 16 and older).
- The property features tennis and boules courts, a fully equipped fitness centre, yoga pavilion and expansive swimming pool. The ample lawns are also ideal for activities like cricket.
- Soothing massages in double and single treatment areas.
- An extensive wine cellar, boasting the finest South African vintages, allows for world-class tasting with Singita's sommelier.
- The country style kitchen is the heart of the home and guests are encouraged to participate in informal cooking or baking sessions.
- Visit the anti-poaching canine unit and meet with one of the senior dog handlers. Watch the highly trained dogs use their skills to track through the bush as part of routine exercises.

A UNIQUE GAME-VIEWING EXPERIENCE

During your stay you are likely to see a great variety of wildlife, including:

- leopard
- lion
- rhino
- large herds of buffalo
- elephant
- zebra
- hyena
- hippopotamus
- nyala
- cheetah
- wild dogs
- a variety of bird species





Preparing for your journey

SUGGESTED PACKING GUIDE

Cotton clothing in neutral colours such as green, khaki and grey is recommended for game drives and walking safaris. If it rains during a game drive, waterproof ponchos will be provided. No formal wear is required at any of our lodges.

Use the weather as your guide:

- **October - April:**
Casual summer clothing (shorts and lightweight shirts) with a warm jersey or sweater for the cooler morning and evening temperatures.
- **May - September:**
Casual lightweight clothing with a very warm parka or windbreaker jacket for the very cold mornings and nights.

To ensure a comfortable safari experience, we recommend that you bring the following:

- Comfortable walking or track shoes, or hiking boots for walks as well as sandals to wear around the lodge.
- A swimming costume or bathing suit, sun block, sun hat, sunglasses, lip balm, mosquito repellent. (Lip balm and insect repellent will be provided, but if you prefer a particular brand, you are welcome to bring it along.)
- Video camera, camera, binoculars (these are also provided) and extra memory cards.

HEALTH REQUIREMENTS

Singita Castleton is situated in a malaria-risk area; it is therefore essential that you consult your medical practitioner regarding antimalaria requirements prior to your visit.

Our location

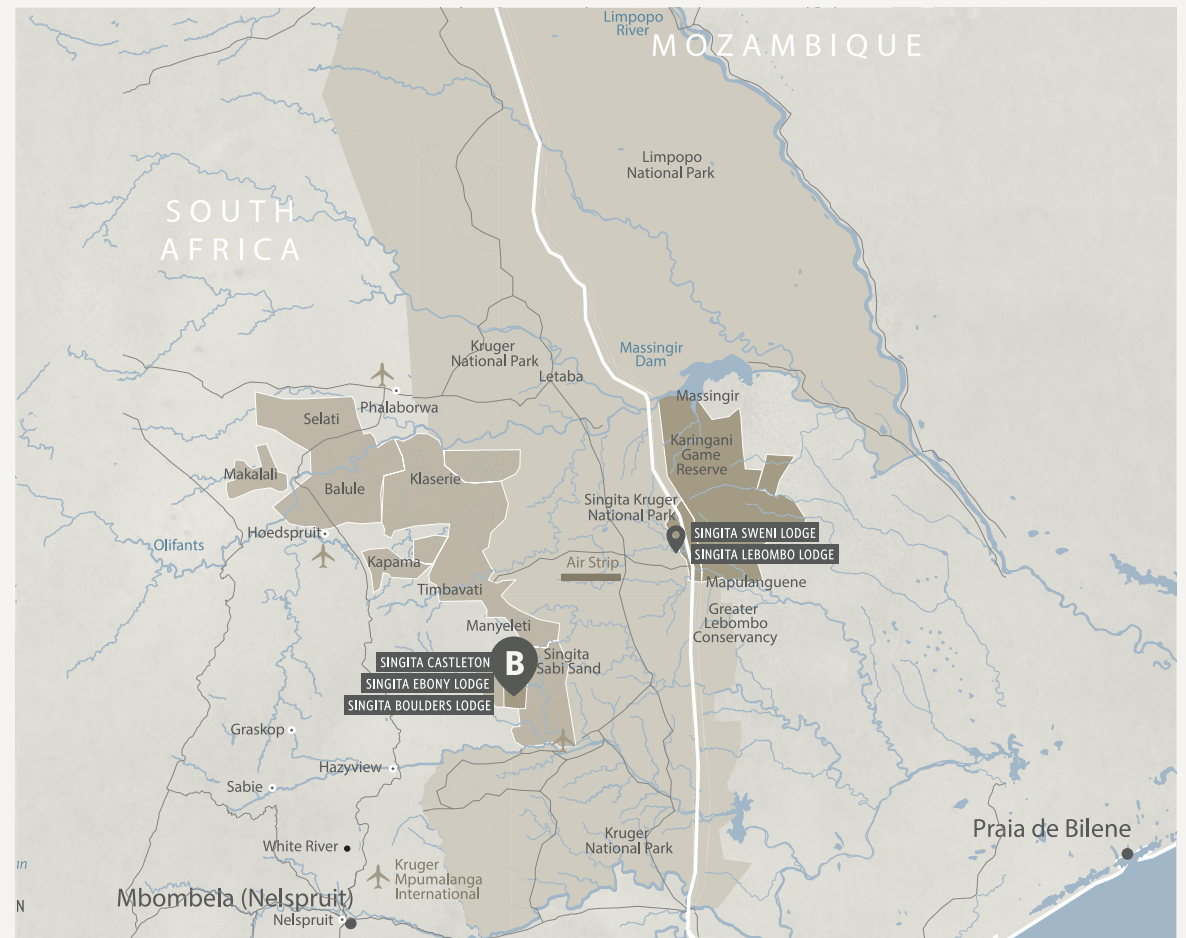


LOCATION OF SINGITA SABI SAND [A]

Singita Sabi Sand is a privately owned reserve in the Sabi Sand Nature Reserve, adjacent to the Kruger National Park in South Africa. Spanning more than 45,000 acres, Singita Sabi Sand is renowned for high concentrations of big game and frequent leopard sightings. This is where you will find Singita Castleton.

LOCATION OF SINGITA CASTLETON [B]

Singita Castleton, the original home of the Bailes family is found in a privately owned 15,000-acre game reserve in the Sabi Sand Reserve, adjacent to the Kruger National Park. This area is fondly known as 'Big cat country'. Reminiscent of an African farmhouse, richly detailed interiors in a neutral palette contrast with traditional tartans and classic prints creating an unbuttoned, lived-in appeal. In this idyllic lodge setting, gracious service from the staff that includes a private guide, tracker, chef, and housekeeper is finely tuned to the dictates and desires of each guest.



GETTING TO Singita Castleton

BY AIR

We can arrange scheduled flights or private charters. All flights land at Singita's airstrip located 10 minutes from the lodge.

- On scheduled flights, luggage is restricted to soft sided bags. Weight allowance: 20 kg (44 lb) for checked luggage and 5 kg (11 lb) for hand luggage.
- Johannesburg - Singita Sabi Sand: approximately one hour.
- Nelspruit - Singita Sabi Sand: approximately 30 minutes.
- Private aircraft pilots land at their own risk and are advised to broadcast their intentions on frequency 124,8 MHz.

BY ROAD

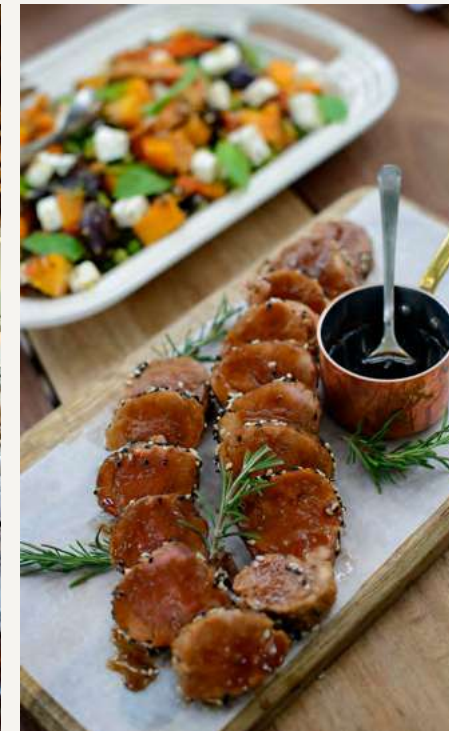
- From Johannesburg: approximately 6½ hours' drive (430 km).
- From Hazyview: approximately 1 hours' drive (50 km).
- Road surface: soft tar and dirt road.



A LUXURY EXPERIENCE in the heart of Africa

Every creature comfort is taken care of with these well-considered amenities and services:

- Private boma with uninterrupted view of the watering hole.
- Private game-viewing vehicle with an experienced field guide and tracker.
- The Singita Boutique & Gallery.
- An extensive wine cellar with the finest South African wine collections.
- Massage treatments in double and single treatment rooms, or in your private cottage.
- Private staff of house manager, chef, housekeeper, guide and tracker.
- A swimming pool overlooking the nearby waterhole and grasslands.
- Fully equipped fitness centre and yoga pavilion.
- Private tennis court with tennis pavilion.
- Boules court.
- Trampoline for children (and adults) to have fun.
- Television set with DVD player and full satellite cable service in the main house.
- Complimentary internet access (WiFi). Due to the remote location of the lodge, connectivity can be slow and intermittent.
- Electricity supply is 220V AC. Converters are also available. Hairdryers are supplied in each suite.
- Children of all ages are welcome. We offer a babysitting service (to be booked in advance) as well as tailor-made activities to suit each family.
- In the interest of safety, childrens' participation in game activities will be at the discretion of your guide.
- Kosher or Halaal food is available at Singita Castleton at an additional charge – please book in advance.
- Mobile phone signal available dependent on area coverage.





Weather and temperature

BEST TIME TO GO ON SAFARI

Southern Africa is a year-round destination. Traditionally the dry winter months (April to October) are best for game viewing, due to the shorter grass, lack of foliage and the absence of water which forces the game to concentrate around the remaining sources of drinking water. Annual rainfall, usually in the form of short afternoon thunder showers that clear up within an hour, occur from December to March. Many species give birth to their young around the start of the rainy season which is when the the bush comes alive with newborn animals.

AVERAGE SEASONAL TEMPERATURE RANGES

SPRING

(Sept - Nov)

Low 20 °C / 68 °F

High 30 °C / 86 °F

SUMMER

(Dec - Feb)

Low 23 °C / 73 °F

High 38 °C / 100 °F

AUTUMN

(March - May)

Low 22 °C / 72 °F

High 31°C / 88 °F

WINTER

(June - Aug)

Low 18 °C / 64 °F

High 29 °C / 84 °F

The above temperatures are monthly averages. The actual daily temperatures may differ from these.

The finer details

OUR TARIFFS INCLUDE

- Luxurious en-suite accommodation, breakfast, lunch and dinner daily, all drinks (including premium wines, spirits and liqueurs).
- Game drives and walking safaris accompanied by an experienced guide.
- Private game-viewing vehicle, guide, host, chef and staff.
- Laundry and valet services.
- Road transfers to and from Singita airstrip.

OUR TARIFFS EXCLUDE

- Telephone calls.
- Air transfers to and from the lodge.
- Massage treatments.
- Certain special meal requests.
- Purchases from the Singita Boutique & Gallery.
- Tourism Levy.

CHECK-IN/CHECK-OUT TIMES AND LODGE CLOSURE

- The lodge is open year-round.
- Check-in time: 14h00.
- Check-out time: 11h00.
- Please note that guests wishing to check in before 14h00 and/or checking out after 11h00 are required to book an additional night at the Day Use Rate.

PAYMENT OPTIONS

Visa, MasterCard and American Express cards accepted.



Providing uninterrupted views of the surrounding landscape, Castleton's outdoor boma offers magical fireside dinners under a canopy of stars – as well as the perfect backdrop for a taste of traditional local dishes.





Tel +27 21 683 3424

enquiries@singita.com

www.singita.com

Lodges and Camps across 4 countries in Africa

SOUTH AFRICA

Kruger National Park: Singita Lebombo and Sweni Lodges

Sabi Sand: Singita Castleton, Boulders and Ebony Lodges

TANZANIA

Grumeti: Singita Sasakwa Lodge, Sabora Tented Camp, Faru Faru Lodge, Serengeti House, Kilima, Milele and Explore

Lamai: Singita Mara River Tented Camp

ZIMBABWE

Malilangwe Wildlife Reserve:
Singita Pamushana Lodge and Malilangwe House

RWANDA

Volcanoes National Park:
Singita Kwitonda Lodge and Kataza House