

*Singita*

SWENI LODGE

KRUGER NATIONAL PARK, SOUTH AFRICA

*“A Singita experience leaves guests with a deeper understanding of the wonders of Africa, and an appreciation for our rare and magnificent wildlife.”*

**- LUKE BAILES  
FOUNDER & EXECUTIVE CHAIRMAN**

## Table of contents



## AN ENDURING COMMITMENT TO *safeguarding Africa's wildlife & wilderness*

Singita is a conservation and ecotourism brand that has been helping to preserve Africa's untouched natural spaces for almost three decades and we offer guests exceptional safari experiences at 16 award-winning lodges and camps across four countries.

In partnership with non-profit Funds & Trusts who implement strategic conservation projects in each of the regions in which we operate, our 100-year purpose is to preserve and protect large parts of African wilderness for future generations.

We are steadfast in our commitment to protect unique ecosystems, help recover critically endangered species and ensure no further extinction, benefit neighbouring communities under our care, and contribute positively to the reduction of GHG emissions through our climate commitments.

Travellers choose to stay at Singita because of the expansive space and beauty of our remote locations. They value the restorative serenity of these pristine wilderness areas, as well as the limited guest and vehicle numbers, extraordinarily consistent game viewing and exceptional & intuitive care that is taken of each guest during their stay. When they depart, they are transformed for life and deeply moved by their connection and contribution to the legacy of this continent.



*“Singita’s ethos of ‘touching the Earth lightly’ is no longer just a forward-thinking principle; it is imperative to our survival, and that of the land, wildlife and communities under our care.”*

**- INGE KOTZE  
GENERAL MANAGER CONSERVATION**



## CONSERVATION as a way of life

**Singita has been championing conservation in Africa from its inception.**

The critical conservation work we carry out with our non-profit Funds & Trusts is aimed at restoring, enhancing and protecting the biodiversity of the ecosystems under our care. Our sustainable conservation model helps to balance tourism in all of the regions in which we operate.

### SINGITA LOWVELD TRUST

In South Africa, the Singita Lowveld Trust manages a wide range of conservation projects in Singita Sabi Sand and Singita Kruger National Park – from anti-poaching initiatives to wildlife research & land management, sustainability efforts and community developments projects such as early childhood development, digital learning and a world-class culinary school.



## WELCOME TO Singita Sweni Lodge

Nestled on the banks of the Sweni River, this intimate lodge provides a bold new african context for contemporary design – as well as an artisanal food journey focussing on sustainable, seasonal flavours.

Offering intimate engagements with nature, the lodge features seven suites, including a secluded Pool Suite with a shaded riverfront deck. The option to connect this suite to the adjacent one allows for a more expansive option and adds an extra layer of privacy that's perfect for families.

Inspired by beetle shells, chameleons, birds' wings and the surrounding trees, Sweni Lodge's subtle glamour celebrates gold and bronze ore, gleaming timbers and vibrant pops of colour. With guests having private access to 33,000 acres of the Kruger National Park, unforgettable game-viewing experiences in one of the continent's most iconic wildlife areas are par for the course.



# The Sweni experience

## ACCOMMODATION

- 6 x one-bedroom suites.
- 1 x one-bedroom pool suite.

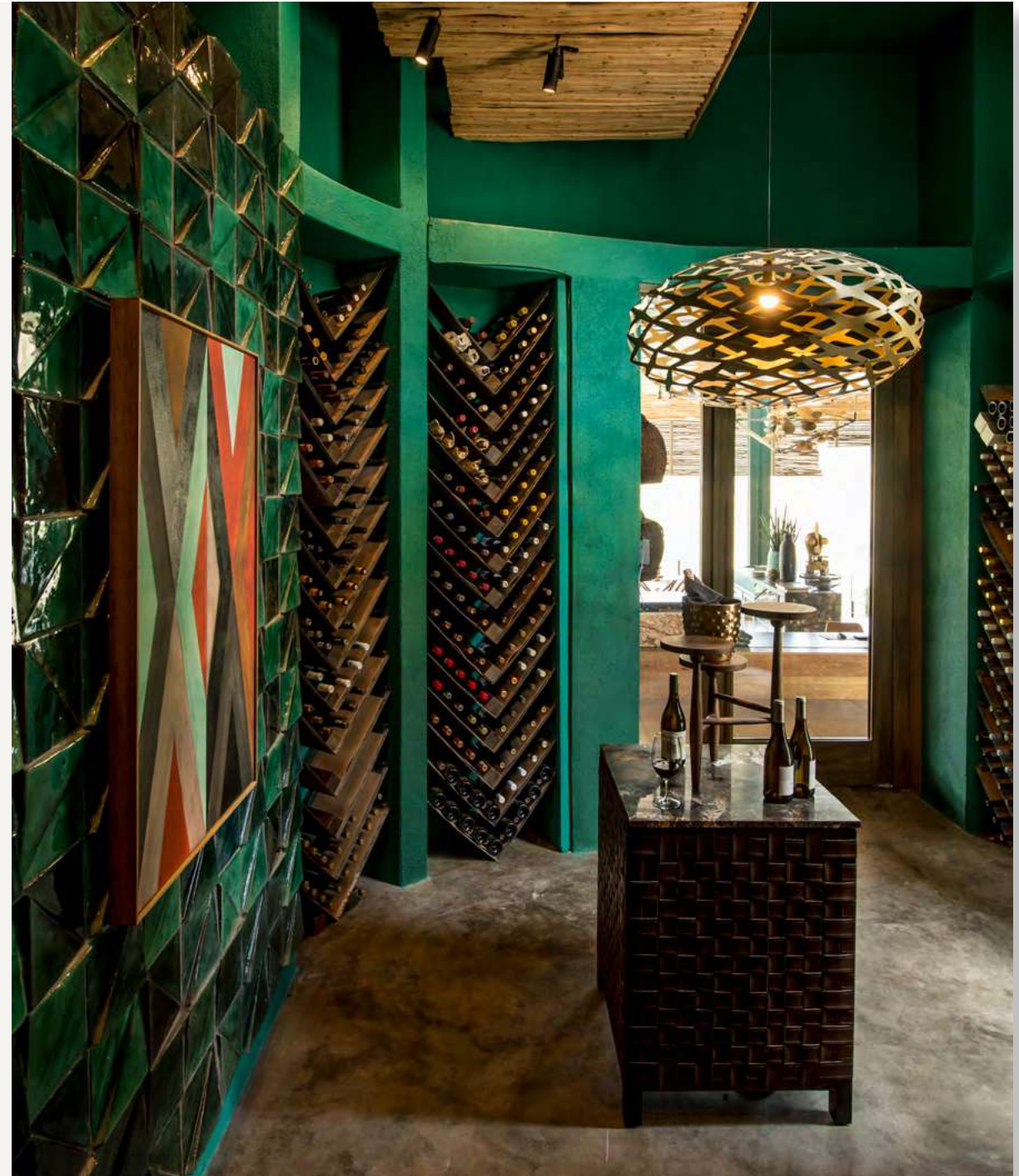
## ACTIVITIES

- Daily game drives with professional guides and trackers provide the perfect opportunity to get up close to Africa's incredible animals.
- Afternoon drives conclude with a spot-lit evening return revealing the elusive magic of nocturnal Africa.
- For the adventurous, there are guided safari walks (for guests 16 and older).
- Enjoy stargazing safaris, bird watching, swimming and board games.
- Visit the Singita Community Culinary School and learn about the impact of this partnership project while cooking traditional dishes with Singita chefs.

## A UNIQUE GAME-VIEWING EXPERIENCE

During your stay you are likely to see a great variety of wildlife, including:

- leopard
- lion
- large herds of buffalo
- elephant
- Sharpe's Grysbok
- hyena
- hippopotamus
- nyala
- cheetah
- wild dogs
- a variety of bird species





# Preparing for your journey

## SUGGESTED PACKING GUIDE

Cotton clothing in neutral colours is recommended for game drives and walking safaris. It is advisable to avoid white and dark colours as they tend to attract bugs. If it rains during a game drive, waterproof ponchos will be provided. No formal wear is required at any of our lodges.

### Use the weather as your guide:

- **October - April:**  
Casual summer clothing (shorts and lightweight shirts) with a warm jersey or sweater for the cooler morning and evening temperatures.
- **May - September:**  
Casual lightweight clothing with a very warm parka or windbreaker jacket for the very cold mornings and nights.

### To ensure a comfortable safari experience, we recommend that you bring the following:

- Comfortable walking or track shoes, or hiking boots for walks as well as sandals to wear around the lodge.
- A swimming costume or bathing suit, sun block, sun hat, sunglasses, lip balm, mosquito repellent. (Lip balm and insect repellent will be provided, but if you prefer a particular brand, you are welcome to bring it along.)
- Video camera, camera, binoculars (these are also provided) and extra memory cards.

## HEALTH REQUIREMENTS

Singita Sweni Lodge is situated in a malaria-risk area; it is therefore essential that you consult your medical practitioner regarding antimalaria requirements prior to your visit.

# Our location

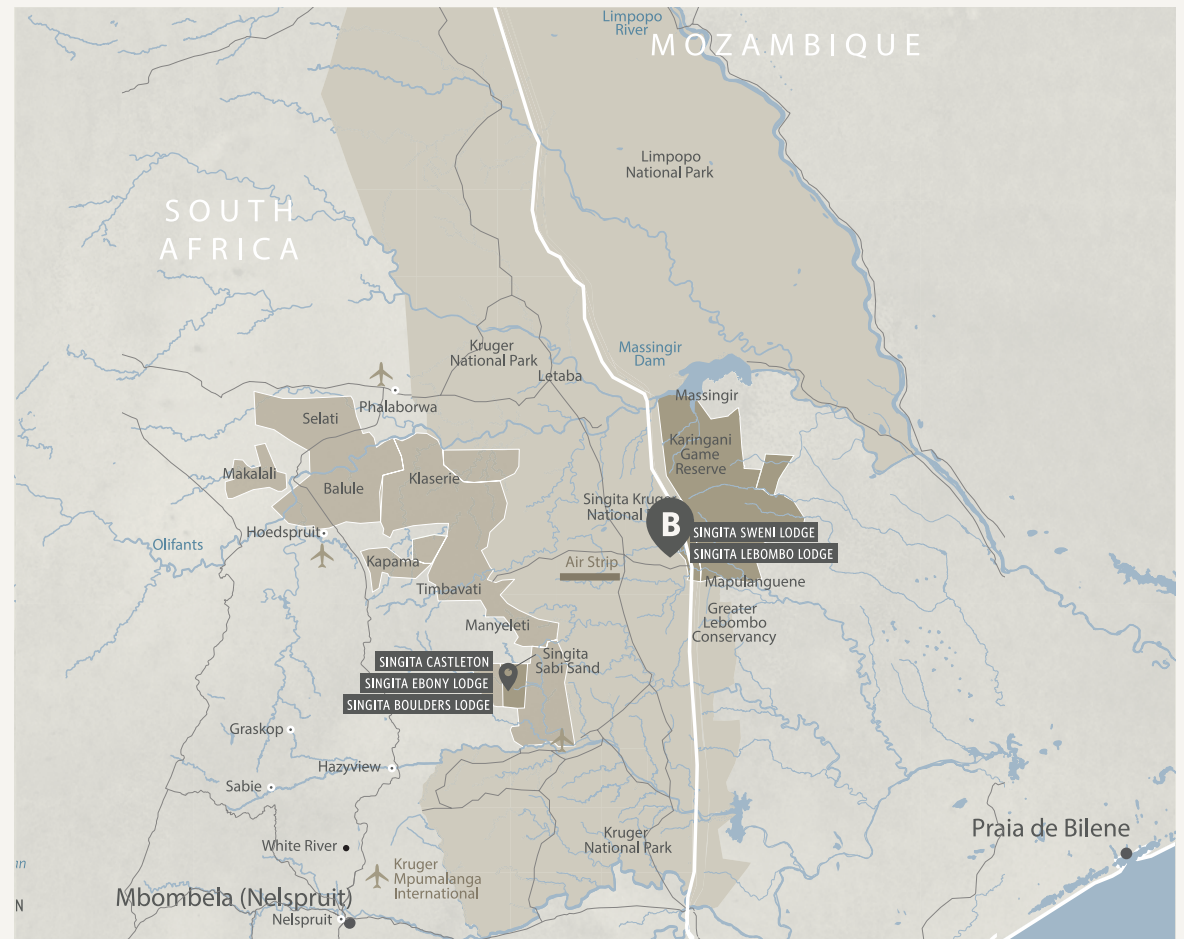


## LOCATION OF SINGITA KRUGER NATIONAL PARK [A]

Singita Sweni Lodge lies in the southeastern reaches of the Kruger National Park, on South Africa's border with Mozambique. Situated on 33,000 acres, Singita's concession is an isolated piece of pristine wilderness where a unique wildlife population thrives across four distinct ecological zones. This area is especially well-known for the remarkable concentration of the 'Big 5' and four particularly formidable prides of lions.

## LOCATION OF SINGITA SWENI LODGE [B]

Resting lightly upon the ground within a 33,000 acre, private concession in the Kruger National Park, on South Africa's border with Mozambique, Singita Sweni Lodge is beautifully concealed by hundreds of trees and is nestled at the edge of the Sweni River. With idyllic proximity to the river, guests are treated to up-close sightings of an incredible number of wildlife that wander down to drink or wallow in the river below the lodge.





## GETTING TO Singita Sweni Lodge

### BY AIR

We can arrange scheduled flights or private charters. All flights land at Satara airstrip, a 45 minute drive from the lodge.

- Guests are collected by Singita staff and transported to the lodge.
- On scheduled flights, luggage is restricted to soft sided bags.
- Weight allowance: 20 kg (44 lb) for checked luggage and 5 kg (11 lb) for hand luggage.
- Johannesburg – Satara: approximately 1 hour 30 minutes.
- Nelspruit – Satara: approximately 45 minutes.

### BY ROAD

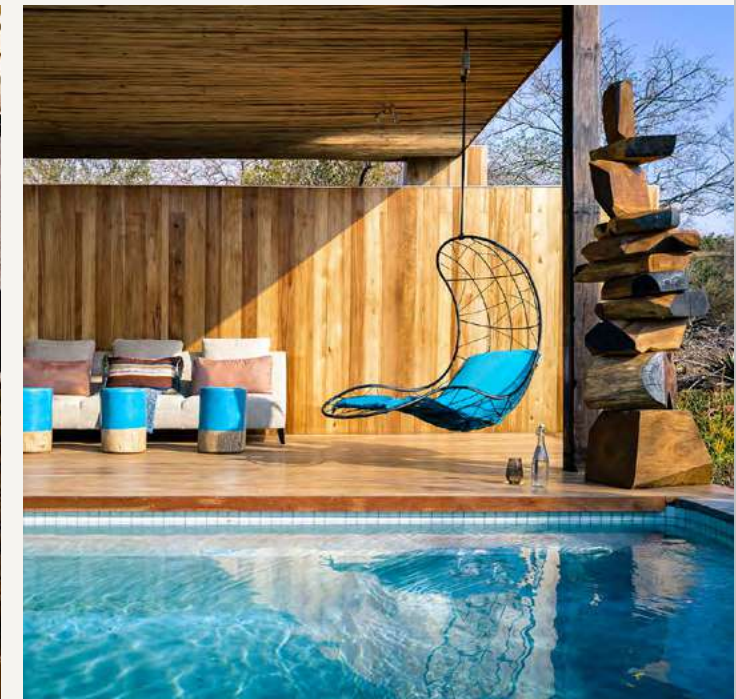
- From Johannesburg: 7.5 - 8 hours' drive (525 km).
- From Hazyview: approximately 3 hours' drive (160 km).



## A LUXURY EXPERIENCE in the heart of Africa

**Every creature comfort is taken care of with these well-considered amenities and services:**

- There is a swimming pool in the main lodge area.
- There is a private swimming pool at the Pool Suite.
- Wellness and fitness facilities are available.
- The Singita Boutique & Gallery.
- There is a television in the gym.
- Dependent upon area coverage, there is mobile phone signal.
- There is complimentary internet (WiFi) access, however due to the remote location of the lodge, the wireless connection can be slow and intermittent.
- Electricity/power available: 220V. Converters are also available and hair dryers are supplied in each suite.
- Children of all ages are welcome. There are babysitting services available and tailor-made activities to suit each family. In the interest of safety, participation of children in game activities is at the discretion of your guide.
- Please note that there are no Kosher or Halaal facilities available





## Weather and temperature

### BEST TIME TO GO ON SAFARI

Southern Africa is a year-round destination. Traditionally the dry winter months (April to October) are best for game viewing, due to the shorter grass, lack of foliage and the absence of water which forces the game to concentrate around the remaining sources of drinking water. Annual rainfall, usually in the form of short afternoon thunder showers that clear up within an hour, occur from December to March. Many species give birth to their young around the start of the rainy season which is when the the bush comes alive with newborn animals.

### AVERAGE SEASONAL TEMPERATURE RANGES

#### SPRING

(Sept - Nov)

Low 15 °C / 59 °F

High 31 °C / 89 °F

#### SUMMER

(Dec - Feb)

Low 22 °C / 72 °F

High 35 °C / 95 °F

#### AUTUMN

(March - May)

Low 19 °C / 66 °F

High 32 °C / 90 °F

#### WINTER

(June - Aug)

Low 8 °C / 46 °F

High 28 °C / 82 °F

The above temperatures are monthly averages. The actual daily temperatures may differ from these.

# The finer details

## OUR TARIFFS INCLUDE

- Luxurious en-suite accommodation, breakfast, lunch and dinner daily, all drinks (including premium wines, spirits and liqueurs).
- Game drives and walking safaris accompanied by a Field Guide and Tracker.
- Laundry services.
- Road transfers to and from Satara airstrip.

## OUR TARIFFS EXCLUDE

- Telephone calls.
- Air transfers to and from the lodge.
- Wellness treatments.
- Certain special meal requests.
- Purchases from the Singita Boutique & Gallery.
- Transport to and from the reserve. Please see our flight & access documentation.
- Tourism Levy.

## CHECK-IN/CHECK-OUT TIMES AND LODGE CLOSURE

- The lodge is open year-round.
- Check-in time: 13h00.
- Check-out time: 11h00.

## PAYMENT OPTIONS

Visa, MasterCard and American Express cards accepted.



*This is a soulful place and it is so easy to slip into reverie and contemplation following the thrilling high of an exciting safari. Serene and contemporary, this safari experience takes you into the heart of 33,000 acres of untouched wilderness.*





Tel +27 21 683 3424

[enquiries@singita.com](mailto:enquiries@singita.com)

[www.singita.com](http://www.singita.com)

# Lodges and Camps across 4 countries in Africa

## SOUTH AFRICA

**Kruger National Park:** Singita Lebombo and Sweni Lodges

**Sabi Sand:** Singita Castleton, Boulders and Ebony Lodges

## TANZANIA

**Grumeti:** Singita Sasakwa Lodge, Sabora Tented Camp, Faru Faru Lodge, Serengeti House, Kilima, Milele and Explore

**Lamai:** Singita Mara River Tented Camp

## ZIMBABWE

**Malilangwe Wildlife Reserve:**

Singita Pamushana Lodge and Malilangwe House

## RWANDA

**Volcanoes National Park:**

Singita Kwitonda Lodge and Kataza House