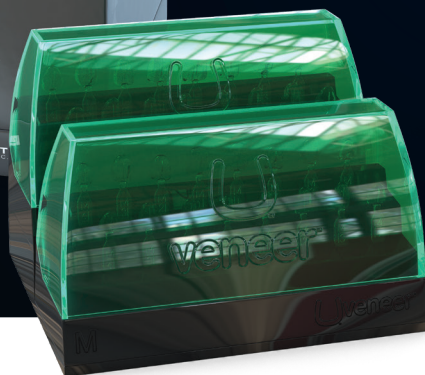




veneer[™]
dental art made simple



veneer[™]
E X T R A



DIRECT COMPOSITE TEMPLATE SYSTEM
TECHNIQUE GUIDES



Techniques for
both Uveneer and
Uveneer Extra
composite templates,
which:

- create predictable composite veneers
- create reproducible mock-ups
- build quick and easy provisionals
- work with any preferred composite
- are autoclavable*

*Black base and transparent lids are NOT autoclavable. Only templates are autoclavable.

DIRECT COMPOSITE TECHNIQUE GUIDE



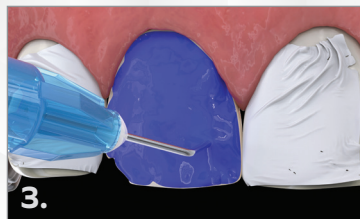
START



Select the Uveneer™ template that corresponds with the tooth being restored. See handle of template for corresponding tooth position, size, and arch. Choose preferred composite shade(s).



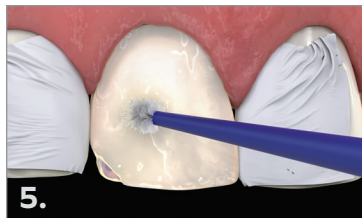
Remove all caries if needed and minimally prepare the tooth.



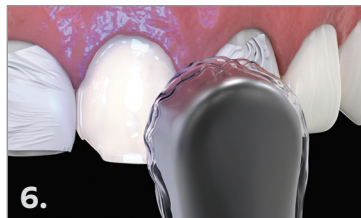
Place interproximal separating matrices and apply Ultra-Etch™ etchant for 15 seconds, Peak™ SE Primer for 20 seconds, or preferred etchant.



Rinse etchant and air dry according to manufacturer's instructions. Ultra-Etch etchant should be rinsed and left moist prior to applying Peak Universal Bond adhesive. If using Peak SE Primer, apply primer and air thin. Do not rinse primer.



Apply Peak™ Universal Bond adhesive with a brushing motion for 10 seconds, then air thin for 10 seconds with suction. Or, apply preferred adhesive according to manufacturer's instructions.



Light cure with VALO™ curing light 10 seconds on Standard Power. If using other curing light, cure according to manufacturer's instructions.

SINGLE SHADE TECHNIQUE



If using a single shade technique, apply preferred composite directly onto tooth. Do not light cure composite.

LAYERING TECHNIQUE



If using a layering technique, place deepest composite layer directly onto the tooth and superficial composite layers into the template. Do not light cure composite.

OR



8. Place selected template over uncured composite. Align centerline of template parallel to the midline of the face and perpendicular to the incisal plane. Using thumb, press the concave side of the template onto the tooth. Press firmly to remove any trapped air.



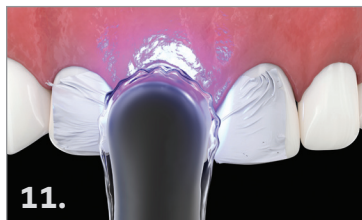
9. Remove any excess uncured composite from the periphery. Verify template alignment.



10. Using VALO™ curing light, cure composite through template. For every 2 mm layer, cure 10 seconds on Standard Power, 4 seconds on High Power, or 3 seconds on Xtra Power. If using other curing light, cure according to manufacturer's instructions.



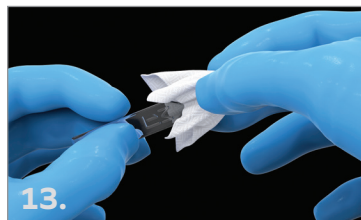
11. Remove the Uvener™ template by gently lifting the handle.



11. Final cure composite directly with the VALO curing light. Cure 10 seconds on Standard Power, 4 seconds on High Power, or 3 seconds on Xtra Power. If using other curing light, cure according to manufacturer's instructions.



12. Avoiding the glossy facial surface, trim bulk of cured composite from periphery with a fine flame-shaped bur. Use a blade for anything next to the margin to avoid altering the margin of the permanent restoration. Use Jiffy™ Composite Polishers, Brushes, Diamond Strips, or Proximal Saws for minimal finishing and adjusting if desired.



13. Immediately after use, thoroughly wipe template with an alcohol pad and then dry, bag, and autoclave according to Uvener template IFU. Do not leave any composite residue on the template in order to maintain translucency and shine.

Do not autoclave the black base.

FINISH

PROVISIONAL TECHNIQUE GUIDE



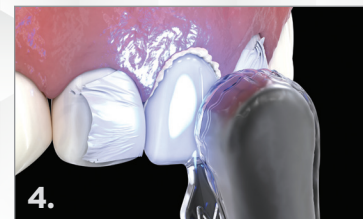
After preparing tooth, select the Uveneer™ template that corresponds with the tooth being restored. See handle of template for corresponding tooth position, size, and arch. Choose preferred composite shade(s).



Load composite into Uveneer template.



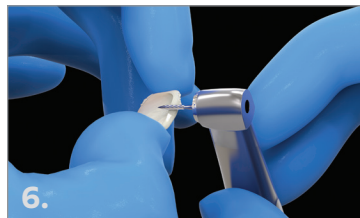
Align centerline of template parallel to the midline of the face and perpendicular to the incisal plane. Using thumb, press the concave side of the template onto the tooth. Press firmly to remove any trapped air.



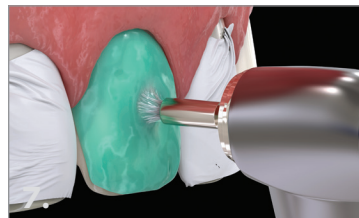
Using VALO™ curing light, cure composite through template. For every 2 mm layer, cure 10 seconds on Standard Power, 4 seconds on High Power, or 3 seconds on Xtra Power. If using other curing light, cure according to manufacturer's instructions.



Pop off composite provisional with composite instrument.



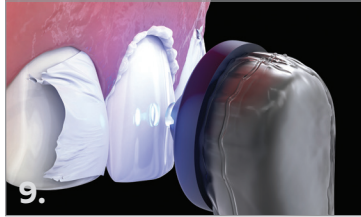
Trim, contour, and polish the provisional as needed.



Clean preparation with Consepis™ Scrub slurry and the STARbrush™ intercoronal brush to remove any proteins or ferric sulfate that could cause dark pigmentation to show through. Rinse and dry preparation. Keep area moist, do not desiccate. Etch 2–3 seconds if hemostatics were used.



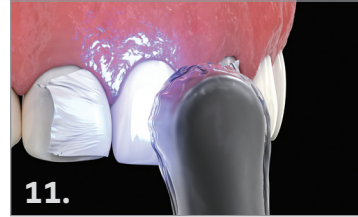
Express enough ClearTemp™ LC temporary veneer cement to coat the inside surface of the provisional.



Seat provisional and tack cure for 3 seconds on Standard Power with VALO™ curing light and PointCure accessory lens.



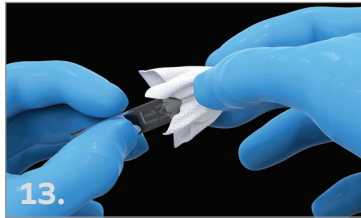
Remove any excess cement from the periphery. Verify provisional placement.



Using VALO curing light, cure ClearTemp™ LC temporary cement for 10 seconds on Standard Power. If using other curing light, cure according to manufacturer's instructions.



Avoiding the glossy facial surface, trim excess cured composite from periphery with a fine flame-shaped bur. Use Jiffy™ Composite Polishers, Brushes, Diamond Strips, or Proximal Saws for minimal finishing and adjusting if desired.



Immediately after use, thoroughly wipe template with an alcohol pad and then dry, bag, and autoclave according to Uvener™ template IFU. Do not leave any composite residue on the template in order to maintain translucency and shine.

Do not autoclave the black base.

FINISH

CLASS IV TECHNIQUE GUIDE

START



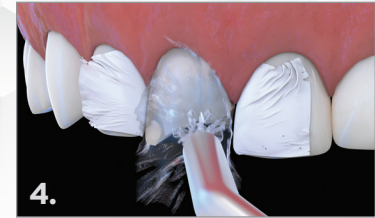
1. Select the Uveneer™ template that corresponds with the tooth being restored. See handle of template for corresponding tooth position, size, and arch. Choose preferred composite shade(s).



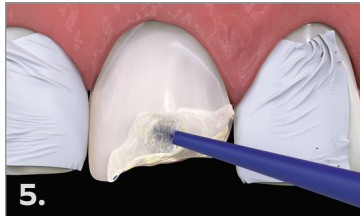
2. Conservatively prepare the tooth if needed.



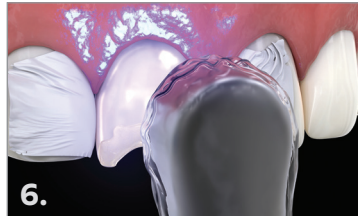
3. Place interproximal separating matrices and apply Ultra-Etch™ etchant for 15 seconds, Peak™ SE Primer for 20 seconds, or preferred etchant.



4. Rinse etchant and air dry according to manufacturer's instructions. Ultra-Etch etchant should be rinsed and left moist prior to applying Peak Universal Bond adhesive. If using Peak SE Primer, apply primer and air thin. Do not rinse primer.



5. Apply Peak™ Universal Bond adhesive for 10 seconds, scrubbing into dentin and brushing on enamel. Air thin for 10 seconds with suction. Or apply preferred adhesive according to manufacturer's instructions.



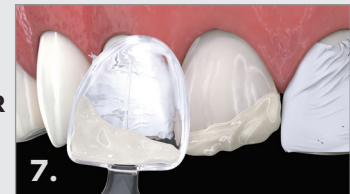
6. Light cure with VALO™ curing light 10 seconds on Standard Power. If using other curing light, cure according to manufacturer's instructions.

SINGLE SHADE TECHNIQUE



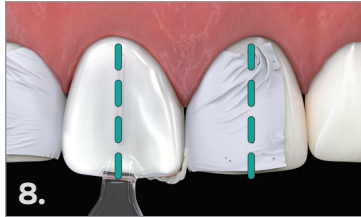
7. If using a single shade technique, apply preferred composite directly onto the broken part of the tooth. Do not light cure composite.

LAYERING TECHNIQUE



7. If using a layering technique, place deepest composite layer directly onto the broken part of the tooth and superficial composite layers into the template. Do not light cure composite.

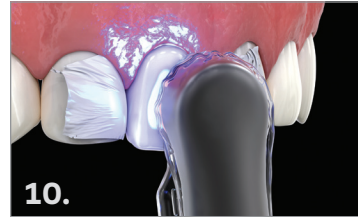
OR



8. Place selected template over uncured composite. Align centerline of template parallel to the midline of the face and perpendicular to the incisal plane. Using thumb, press the concave side of the selected template onto the tooth.



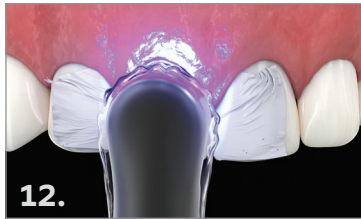
9. Remove any excess uncured composite from the periphery. Verify template alignment.



10. Using VALO™ curing light, cure composite through template. For every 2 mm layer, cure 10 seconds on Standard Power, 4 seconds on High Power, or 3 seconds on Xtra Power. If using other curing light, cure according to manufacturer's instructions.



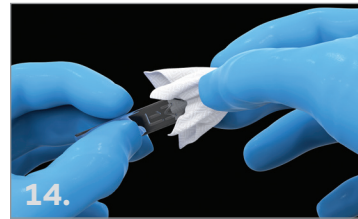
11. Remove the Uvener™ template by gently lifting the handle.



12. Final cure composite directly with the VALO curing light. Cure 10 seconds on Standard Power, 4 seconds on High Power, or 3 seconds on Xtra Power. If using other curing light, cure according to manufacturer's instructions.



13. Avoiding the glossy facial surface, trim excess cured composite from periphery with a fine flame-shaped bur. Use Jiffy™ Composite Polishers, Brushes, Diamond Strips, or Proximal Saws for minimal finishing and adjusting if desired.



14. Immediately after use, thoroughly wipe template with an alcohol pad and then dry, bag, and autoclave according to Uvener template IFU. Do not leave any composite residue on the template in order to maintain translucency and shine.

Do not autoclave the black base.

FINISH

CLASS V TECHNIQUE GUIDE

START



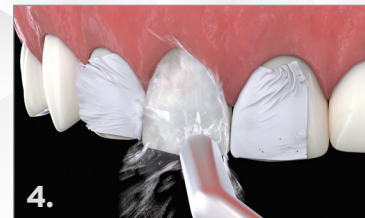
1. Select the Uveneer™ template that corresponds with the tooth being restored. See handle of template for corresponding tooth position, size, and arch. Choose preferred composite shade(s).



2. Remove decay and prepare tooth for bonding.



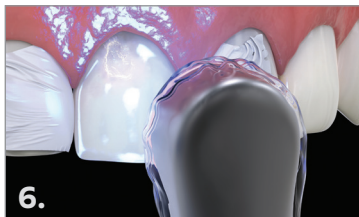
3. Place interproximal separating matrices and apply Ultra-Etch™ etchant for 15 seconds, Peak™ SE Primer for 20 seconds, or preferred etchant.



4. Rinse etchant and air dry according to manufacturer's instructions. Ultra-Etch etchant should be rinsed and left moist prior to applying Peak Universal Bond adhesive. If using Peak SE Primer, apply primer and air thin. Do not rinse primer.



5. Apply Peak™ Universal Bond adhesive with a brushing motion for 10 seconds, then air thin for 10 seconds with suction. Or, apply preferred adhesive according to manufacturer's instructions.



6. Light cure with VALO™ curing light 10 seconds on Standard Power. If using other curing light, cure according to manufacturer's instructions.

SINGLE SHADE TECHNIQUE



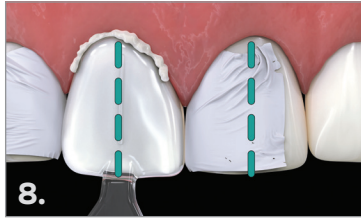
7. If using a single shade technique, apply preferred composite directly onto the cavity. Do not light cure composite.

LAYERING TECHNIQUE



7. If using a layering technique, place deepest composite layer directly onto the cavity and superficial composite layers into the template. Do not light cure composite.

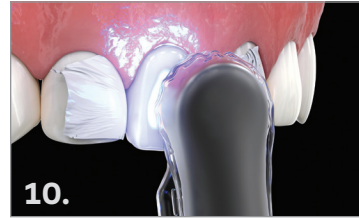
OR



8. Place selected template over uncured composite. Align centerline of template parallel to the midline of the face and perpendicular to the incisal plane. Using thumb, press the concave side of the template onto the tooth. Press firmly to remove any trapped air.



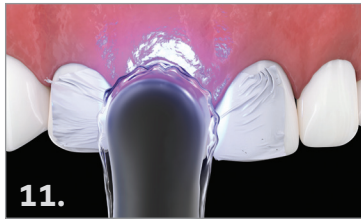
9. Remove any excess uncured composite from the periphery. Verify template alignment.



10. Using VALO™ curing light, cure composite through template. For every 2 mm layer, cure 10 seconds on Standard Power, 4 seconds on High Power, or 3 seconds on Xtra Power. If using other curing light, cure according to manufacturer's instructions.



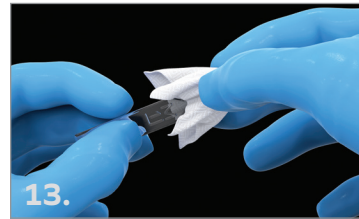
11. Remove the Uvener™ template by gently lifting the handle.



11. Final cure composite directly with the VALO curing light. Cure 10 seconds on Standard Power, 4 seconds on High Power, or 3 seconds on Xtra Power. If using other curing light, cure according to manufacturer's instructions.



12. Avoiding the glossy facial surface, trim excess cured composite from periphery with a fine flame-shaped bur. Use Jiffy™ Composite Polishers, Brushes, Diamond Strips, or Proximal Saws for minimal finishing and adjusting if desired.



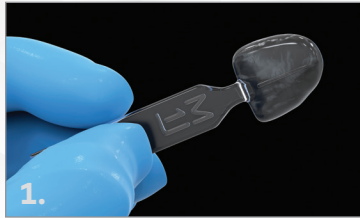
13. Immediately after use, thoroughly wipe template with an alcohol pad and then dry, bag, and autoclave according to Uvener template IFU. Do not leave any composite residue on the template in order to maintain translucency and shine.

Do not autoclave the black base.

FINISH

PORCELAIN REPAIR TECHNIQUE GUIDE

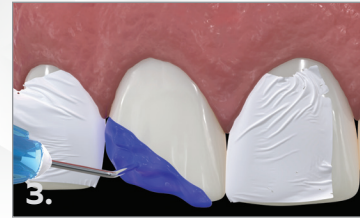
START



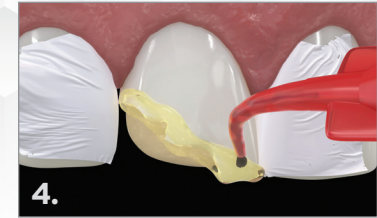
1. Select the Uveneer™ template that corresponds with the tooth being restored. See handle of template for corresponding tooth position, size, and arch. Choose preferred composite shade(s).



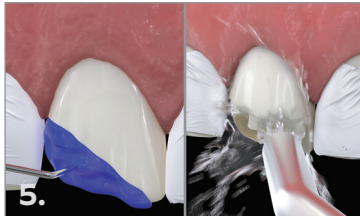
2. Use diamond bur to roughen broken ceramic surfaces.



3. Apply Ultra-Etch™ etchant for 15 seconds to etch the dentin before applying porcelain etch to the fractured porcelain.



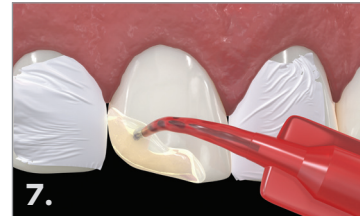
4. Apply Ultradent™ Porcelain Etch etchant onto the broken surface. Etch for 90 seconds.



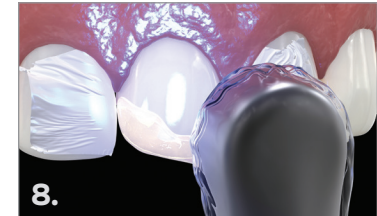
5. Apply Ultra-Etch™ etchant for 5 seconds to remove porcelain salts and debris formed by hydrofluoric acid etching. Rinse and thoroughly air dry fractured porcelain surface.



6. Apply Ultradent™ Silane solution onto the broken porcelain surface with a Black Mini™ Brush Tip. Let evaporate for 1 minute, then blow with a gentle stream of air until completely dry.



7. Apply Peak™ Universal Bond adhesive for 10 seconds with a light brushing motion on the ceramic surface and scrub firmly into dentin, then air thin for 10 seconds with suction. Or, apply preferred adhesive according to manufacturer's instructions.



8. Light cure for 10 seconds with VALO™ curing light on Standard Power. If using other curing light, cure according to manufacturer's instructions.

SINGLE SHADE TECHNIQUE



OR

LAYERING TECHNIQUE



If using a single shade technique, apply a block out shade over metal, light cure, then apply preferred composite directly onto tooth. Do not light cure composite.

If using a layering technique, apply a block out shade over metal, light cure, then place deepest composite layer directly onto the tooth and superficial composite layers into the template. Do not light cure composite.



Place selected template over uncured composite. Align centerline of template parallel to the midline of the face and perpendicular to the incisal plane. Using thumb, press the concave side of the template onto the tooth. Press firmly to remove any trapped air.



Remove any excess uncured composite from the periphery. Verify template alignment.



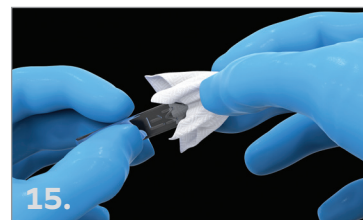
Cure composite through template with the VALO™ curing light. For every 2 mm layer, cure 10 seconds on Standard Power, 4 seconds on High Power, or 3 seconds on Xtra Power. If using other curing light, cure according to manufacturer's instructions.



Remove the template by gently lifting the handle. Final cure composite directly with the VALO curing light. Cure 10 seconds on Standard Power, 4 seconds on High Power, or 3 seconds on Xtra Power. If using other curing light, cure according to manufacturer's instructions.



Avoiding the glossy facial surface, trim excess cured composite from periphery with a fine flame-shaped bur. Use Jiffy™ Composite Polishers, Brushes, Diamond Strips, or Proximal Saws for minimal finishing and adjusting if desired.



Immediately after use, thoroughly wipe template with an alcohol pad and then dry, bag, and autoclave according to Uveneer™ template IFU. Do not leave any composite residue on the template in order to maintain translucency and shine.
Do not autoclave the black base.

FINISH

PORCELAIN
REPAIR

MOCK-UP TECHNIQUE GUIDE

START



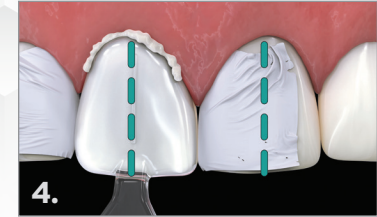
Select the Uveneer™ template that corresponds with the tooth being restored. See handle of template for corresponding tooth position, size, and arch. Choose preferred composite shade(s).



Place interproximal separating matrices. If you choose to, you can apply a separating medium such as DeOx™ barrier solution to the tooth for easier removal of the cured composite veneer.



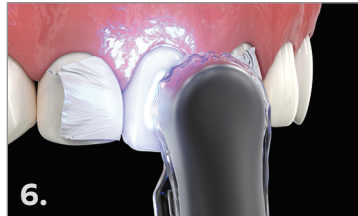
Apply preferred composite directly onto the tooth. Do not light cure composite.



Place selected template over uncured composite. Align centerline of template parallel to the midline of the face and perpendicular to the incisal plane. Using thumb, press the concave side of the template onto the tooth. Press firmly to remove any trapped air.



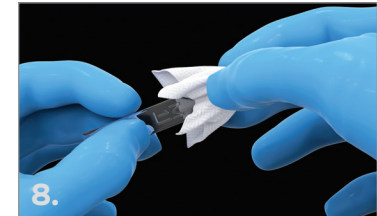
Remove any excess uncured composite from the periphery. Verify template alignment.



Using VALO™ curing light, cure composite through template. For every 2 mm layer, cure 10 seconds on Standard Power, 4 seconds on High Power, or 3 seconds on Xtra Power. If using other curing light, cure according to manufacturer's instructions.



Remove the Uveneer template by gently lifting the handle.



Immediately after use, thoroughly wipe template with an alcohol pad and then dry, bag, and autoclave according to Uveneer template IFU. Do not leave any composite residue on the template in order to maintain translucency and shine.

Do not autoclave the black base.

FINISH



- Provides a beautiful and predictable symmetry to any smile
- Available in sizes Medium and Large
- Comes with maxillary and mandibular arch templates
- Includes templates that range from premolar to premolar



- Designed based on scans of real teeth
- Mimics real tooth anatomy for authentic, natural results
- Provides maxillary arch templates in Extra Large, Large, Medium, and Square sizes
- Includes templates that range from canine to canine

M - Medium Lower

M - Medium Upper

L - Large Lower

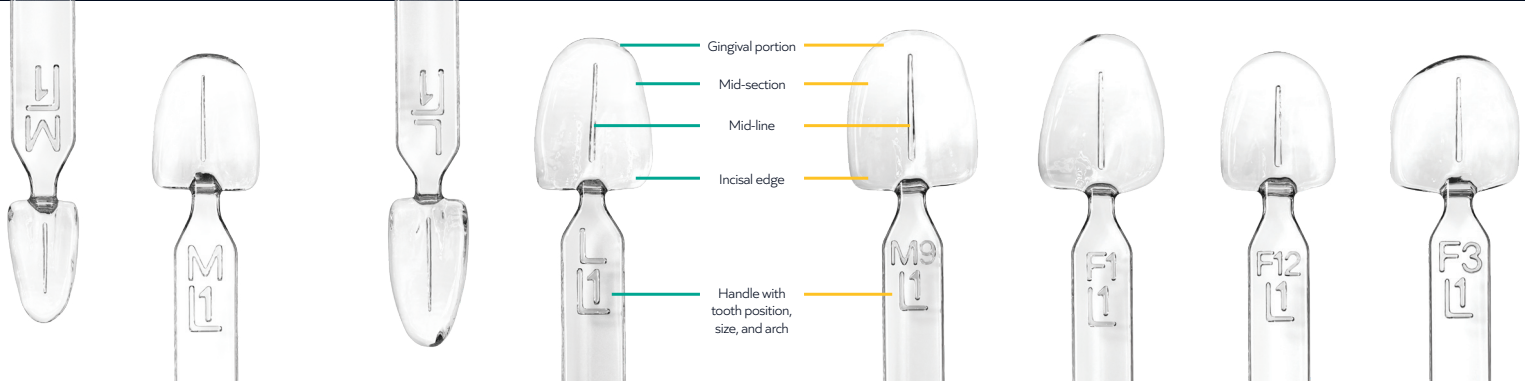
L - Large Upper

M9 - Extra Large

F1 - Large

F12 - Medium

F3 - Square



MOCK-UP

UVENEER AND UVENEER EXTRA TEMPLATES ARE PART OF ULTRADENT'S FAMILY OF RESTORATIVE PRODUCTS

Ultra-Etch™
Etchant



Mosaic™
Universal Composite



Peak™
Universal Bond
Adhesive



Vit-I-escence™
Restorative Material



PermaShade™ LC
Resin



ClearTemp™ LC
Cement



Uvener™
Template System



VALO™
Curing Lights



Jiffy™
Finishing Systems



Etch & Bond

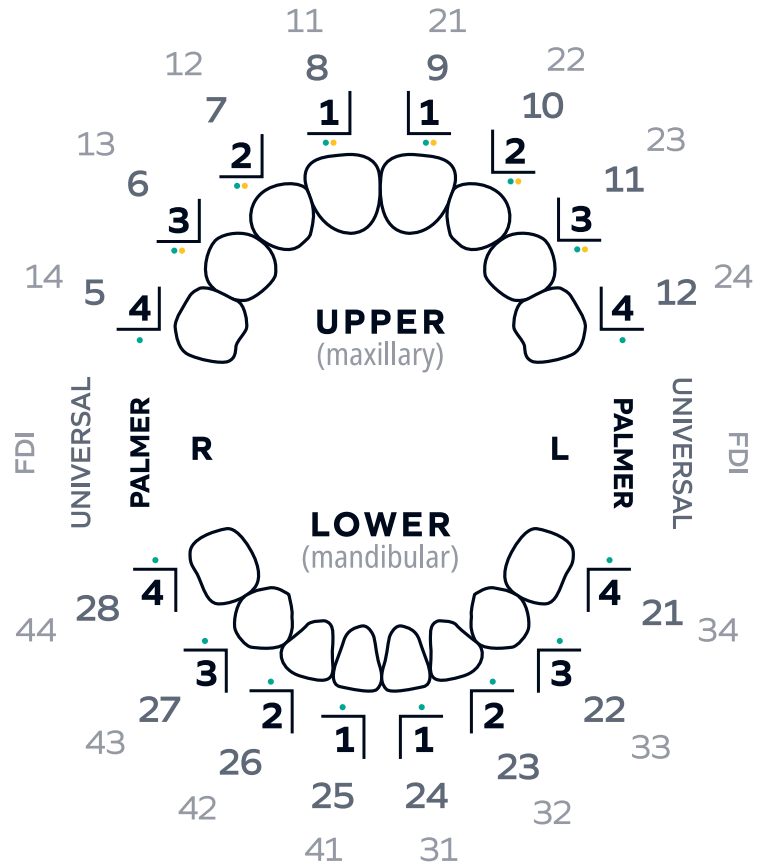
Composite

Cementation

Templates

Curing

Finishing



DENTAL NUMBERING SYSTEM

