

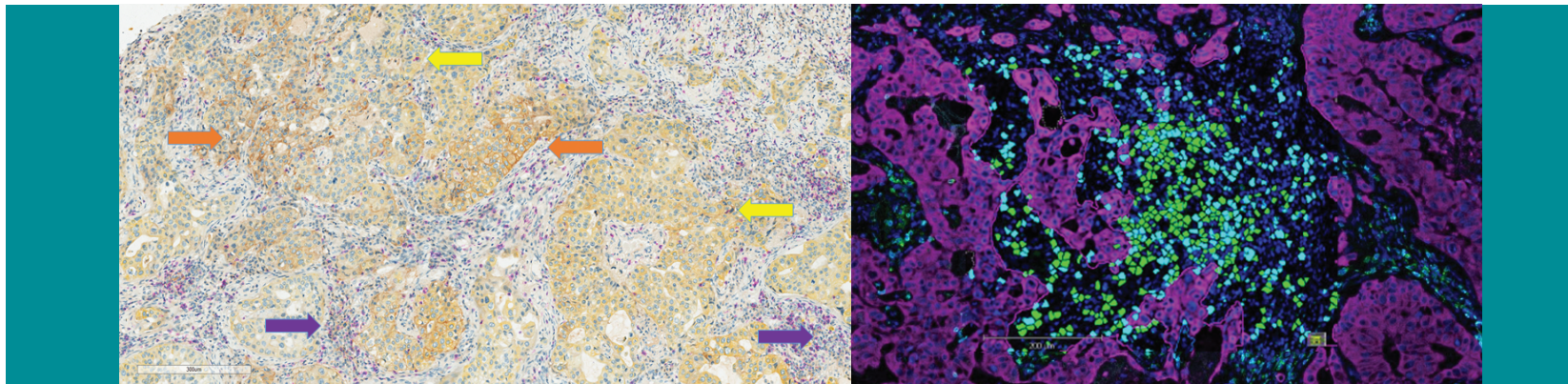
Understanding the Tumor Microenvironment

Our PHASEZERO® team has developed protocols for targeting a wide range of oncology targets, plus routine immune cell markers. Our scientists can also develop custom profiles specific to your needs. With the PerkinElmer Vectra® Polaris™ Automated Quantitative Pathology Imaging System, we have extended our services capabilities to drug and diagnostic development scientists

The Vectra Polaris system integrates seven-color multispectral imaging with whole-slide scanning in a simplified digital pathology workflow to support the quantification and analysis of tissue sections that are stained with multiple immunohistochemical stains.

IHC assays are fully automated and run on the following machines:

- Dako Autostainer Plus (IQ / OQ / PQ validated)
- Ventana Discovery XT
- Leica BondRX machines



Numerous CD8+ T cells in stroma (purple arrows) and some infiltrating the tumor (yellow). PD-L1+ tumor cell membrane staining also observed (orange arrows).



Facility and Capabilities

- GLP accredited for moderate throughput IHC with fully trained, experienced scientists, including GLP TCR Study Directors
- Clinical and Veterinary Consultant Histopathologists
- Complete process covered by SOPs
- Digital Pathology – Aperio ScanScope



Technology

- Wide experience with multiple detection systems and protocols
- Range of antigen retrieval approaches
- Dako Envision, Flex+ and CSAII™, Vector ABC & ImmPress™ and Menarini pHRP detection and fluorescent labeled secondary antibodies
- Multiple chromogenic endpoints
- Detection systems - Ventana Omnimap™ and Ultramap™ / Leica Bond™



Analysis

- Confocal and fluorescence microscopy
- Scalable via use of TMAs
- Semi-quantitative analysis
- Vectra Polaris and Aperio Digital image analysis
- ImageQuant – segmentation and TMA algorithms

We Are the “Customerization” Experts!

We customize each product & service program to meet your requests

1

Collections

- Inclusion / exclusion criteria
- Matched sample types from individual donors
- Network of repeat donors
- Longitudinal (time point) studies

2

Processing

- Specify pooled lot requirement (activity, # of donors, gender, etc.)
- Follow internal SOPs or “customer specified” protocols for collections or processing steps

3

Packaging

- Aliquotting
- Specialty tubes / vials
- Custom labeling & CofAs

4

Shipping

- Product shipped ready-to-use
- Various carrier options
- Ship to multiple sites within accounts
- Same day shipping (select products)

Customer Service

- Industry leading customer service
- Unconditional product guarantee
- Global team to assist researchers around the world

BIOIVT
ELEVATING SCIENCE™



Comprehensive Solutions for Oncology Research

BIOIVT
ELEVATING SCIENCE™

For Inquiries:

North America & Asia Pacific
T +1 516 483 1196 F +1 516 483 4683
E customerservice@bioivt.com

Europe, Middle East & Africa
T +44 (0) 1444 250010 F +44 (0) 1444 250066
E cseurope@bioivt.com

BioIVT.com

Tissues, Biofluids and Cells to Accelerate Oncology Research

BioIVT is a leading global provider of high-quality biological specimens and value-added services. We specialize in control and disease state samples including human and animal tissues, cell products, blood and other biofluids. Our unmatched portfolio of clinical specimens directly supports oncology research and the effort to improve patient outcomes by coupling comprehensive clinical data with donor samples. By combining our technical expertise, exceptional customer service and unparalleled access to biological specimens, BioIVT serves the oncology research community as a trusted partner in ELEVATING SCIENCE.

Solid Tumor Indications

- Lung Cancer (Select cases with EGFR, KRAS)
- Breast Cancer (ER / PR / HER2)
- Colorectal Cancer (Select cases with BRAF, KRAS)
- Bladder Cancer
- Head & Neck Cancer
- Gynecological Cancers
- Prostate Cancer
- Kidney Cancer
- Brain Cancer
- Melanoma (Select cases with NRAS)

Tissue Formats

- Fresh
- FFPE
- Fresh Frozen
- OCT Embedded

Biofluids Available

- Blood-derived with anticoagulant of choice
- Non-blood derived biofluids include
 - Respiratory
 - Reproductive
 - Gastrointestinal fluids and more

Cell Types Available

- SUM Breast Cancer Cell Lines
- WSU Hematological Cell Lines
- OPC Prostate Cancer Cell Lines
- Primary Human Cancer Associated Fibroblasts and Epithelial Cells
- Cellaria Cancer Models and Media

Sarcoma Indications

- Chondrosarcoma
- Osteosarcoma
- Dermatofibrosarcoma Protuberans
- Rhabdomyosarcoma
- Stromal Sarcoma
- Ewing Sarcoma
- Fibrosarcoma
- Gastrointestinal Stromal Tumor (GIST)
- Kaposi Sarcoma
- Leiomyoma
- Leiomyosarcoma
- Liposarcoma
- Mesothelioma

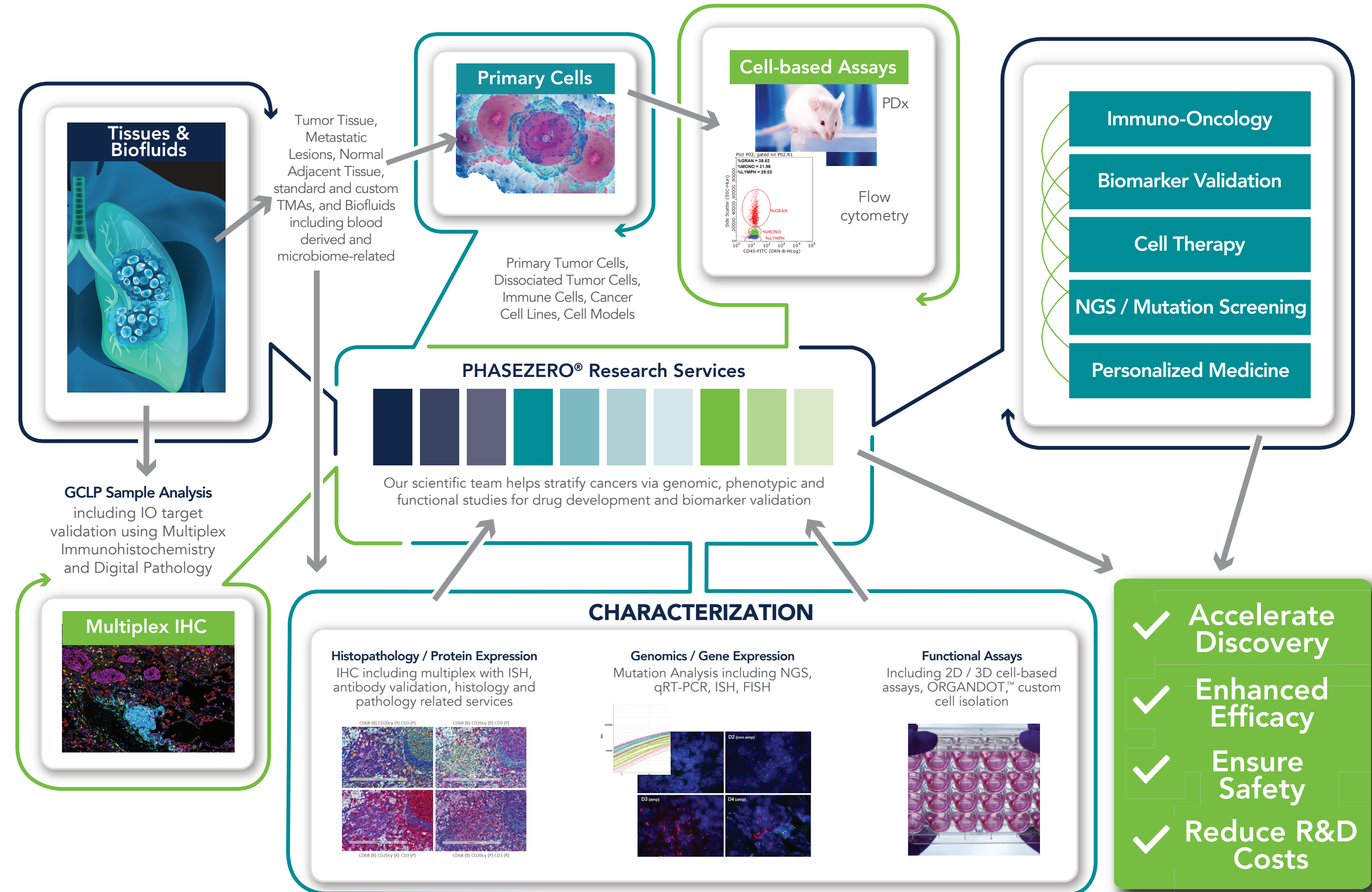
Heme-oncology Indications

- Lymphoma (including Non-Hodgkin and Hodgkin's Lymphoma)
- Diffuse Large B-Cell Lymphoma
- Mantle Cell Lymphoma
- Leukemias (including ALL, CML, CLL)
- Multiple Myeloma and others
- B-Cell Lymphoma
- Burkitt's Lymphoma
- Follicular Lymphoma

Procurement Options

- Matched sets from a single donor
- Longitudinal timepoints from a single donor
- Pre-treatment / Naïve cohorts
- Client-specific exclusion / inclusion criteria

Biological Tools and Services for Your Preclinical Through Clinical Needs



High-quality



Customized Ready-to-Use Formats



Expansive Donor Network



Turn Key Solutions