

MONSTER 1200





Index

Better. Faster. Monster.	3
Timeless icon	5
Essential, refined lines	9
Stylish even in the details	13
The latest evolution of the Testastretta 11°	17
Easy and safe riding	21
Sports-riding ergonomics	23
Advanced technology	25
Monster instinct	29
Absolute sports performance	31
Safety as standard	33
Endless excitement	35
Always by your side	37
More value to your passion	39
Technical data and gear	41
Accessories	51
Apparel	63

Better. Faster. Monster.

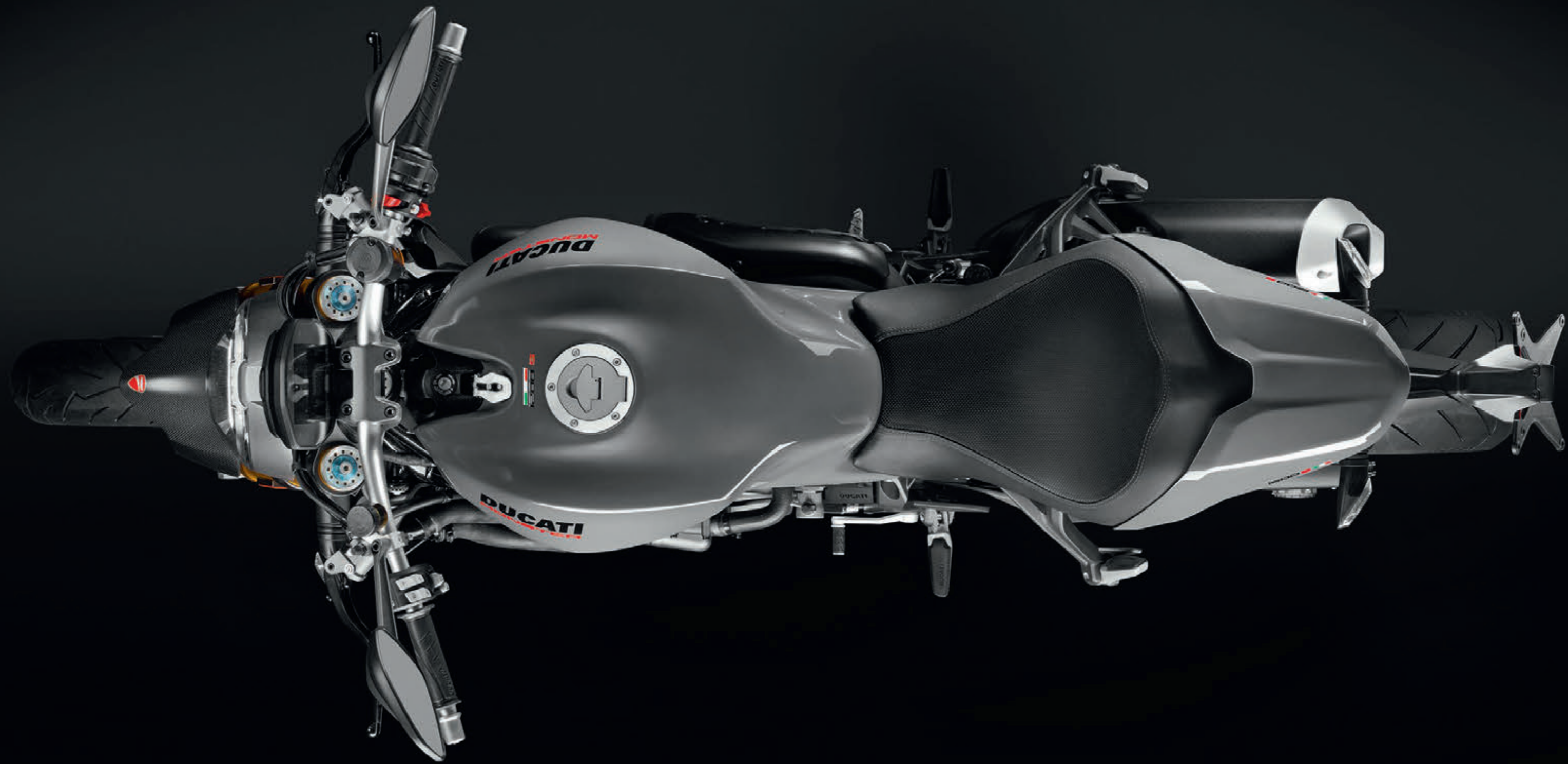
The Monster 1200 has evolved, while remaining faithful to the values that made Monster such a unique bike. This translates into an essential, technological bike, in which the innate sporty nature is emphasised by its compact dimensions and agile bike settings that ensure handling and maximum riding enjoyment. Elements that match perfectly with the latest evolution of the Ducati Testastretta 11° DS engine, which unleashes 147 hp unleashes a power of 147hp and 12.6 kgm of torque and is always ready to respond whatever the speed.





Timeless icon

The design of the Monster 1200 is both contemporary and iconic, characterised by particular attention to detail, the tank fastener being just one example, a stylistic throwback to the very first model. An unmistakable model that is a modern take on the original concept of the bike created in 1993. The muscular lines, trellis frame and characteristic elements such as the slender rear end and classic round headlight, iconic yet modern, featuring DRL technology on the S version, solidify its role as a modern-day icon.



Essential, refined lines

Further contributing to the compactness and sporty nature of the Monster 1200 are the proportions and curves of the tank that recall the iconic Monster lines, with a modern, sophisticated twist. Riding comfort is guaranteed by the deep grooves on the sides of the tank and the perfect alignment of the intersection zone with the seat.







Stylish even in the details

With the Monster 1200, essentiality takes on a more highly evolved form, perfectly combining highly sophisticated content with the utmost attention to detail. For this reason, great care has been paid to the surfaces that characterise the super structure, reinterpreted to great effect, and to the wheel design; 10 -spoke for the Monster 1200 and 3-spoke 'Y' for the Monster 1200 S. The single-sided swingarm has been completely redesigned to reduce the dimensions of the wheelbase and to ensure maximum manoeuvrability of the bike. In addition, the design of the silencer is inspired by the Monster 1200 R and the licence plate support is anchored directly under the tail, as on the original Monster.



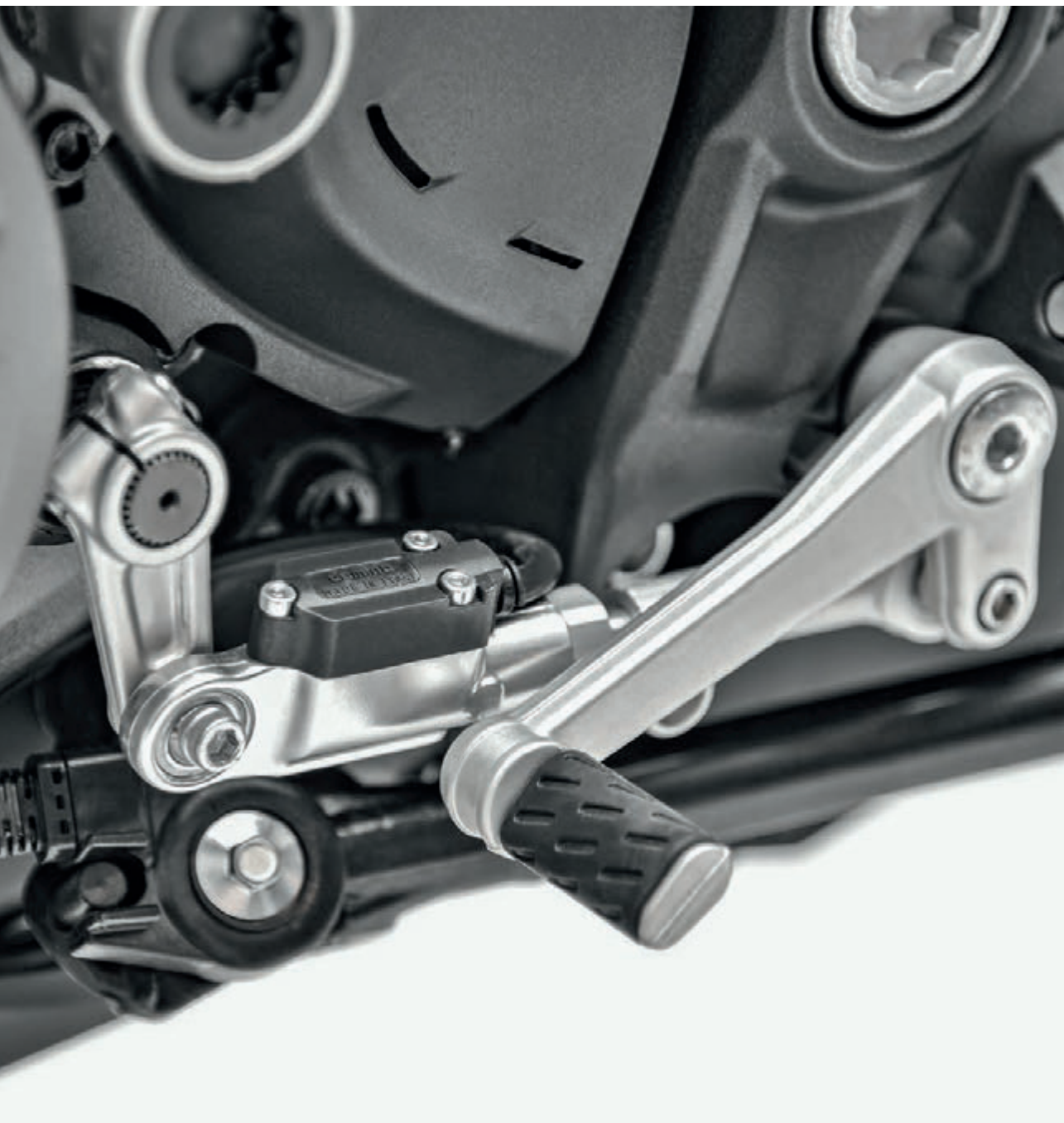




The latest evolution of the Testastretta 11°

The Testastretta 11° DS Euro 4 homologated engine provides an ever-ready, full supply at all speeds and 147 hp maximum power at 9250 rpm, the Monster 1200 offers the sheer enjoyment and excitement of a true sports bike. Thanks to the oval throttle bodies with 56 mm diameter and compression ratio of 13:1, the 1198 cc twin boasts a substantial torque curve with a peak of 12.6 kgm at 7750 rpm and over 10 kgm available between 3000 to over 10000 rpm. Great attention has also been paid to improving supply at low speeds, and to engine response when the throttle is opened, in order to ensure smooth delivery in all conditions.





Easy and safe riding

The chassis of the Monster 1200 has been designed to offer the maximum in terms of handling and riding enjoyment. Brakes and suspension are of a high level, for safe enjoyment with optimum control. The Brembo braking system, with M50 radial monoblock callipers on 330 mm discs for the S version, ensures powerful, precise and safe braking. Thanks to the interaction with latest generation Bosch Cornering ABS, the braking system is also highly effective when leaning. The suspension, with fully adjustable Öhlins fork and shock on the S version, allows for sports riding without compromise, as does the Ducati Quick shift up & down, for shifting without using the clutch, as standard on the Monster 1200 S and available as an accessory for the standard version.



Sports-riding ergonomics

The compact design and sports attitude of the Monster 1200 are the result of careful design and detailed studies in ergonomics. Particularly the short tail, compact and pointing upwards, expresses dynamism and lightness from the first glance, as well as supporting the seat with, height adjustable in two positions (795 and 820 mm). In addition, a brand new steel trellis sub-frame also supports the passenger footpegs, now separate from the rider's. This configuration gives the Monster 1200 an even more sporty line and improves interaction between the bike and rider.





Advanced technology

The Monster 1200 is equipped with an advanced electronics package that enhances performance and helps the rider to control the bike, improving the safety level on any route and in any conditions. The Monster has mounted the Inertial Measurement Unit, IMU, allowing for the differentiated operation of the ABS Bosch when leaning (Cornering ABS Bosch) and heightened control with Ducati Wheelie Control. The equipment also includes the Ducati Safety Pack (Cornering ABS Bosch and Ducati Traction Control), Ride by Wire and the Riding Modes (Sport, Urban and Touring). Each Riding Mode is associated with pre-set levels of engine power/delivery, DWC, DTC and ABS Bosch. The rider can modify the intervention of each device to create a personalised Riding Mode to suit the conditions of use. Another characteristic element of the Monster 1200 is the front headlight. Completely redesigned, it includes a double parabola and, on the Monster 1200 S, also a DRL (Day Time Running Light). This light has allowed for a different dash support, attached to the handlebar risers. The front headlight also benefits from a LED position light. LED lighting technology is also applied to the rear light and turn signals (on the S version), while the dashboard features a latest-generation colour TFT display. The fuel level and gear in use are always visible.





Monster instinct

Perfectly balanced in terms of engine, chassis and electronics, the Monster 1200 offers exciting dynamic behaviour, for maximum riding enjoyment. The resulting bike is able to boast a unique performance, thanks to the full and powerful engine, compact dimensions, efficient chassis and high level electronics package. Quick when changing direction, precise on corner-entry and efficient when it comes to acceleration, the Monster always ensures the sensation of control and handling which puts the rider at ease. All of this, plus a superbike braking system, the best of Ducati technology in terms of safety and the possibility of adapting to the specific conditions of use, allowing the Monster 1200 to express its sports attitude safely and intuitively.





S Equipment

Absolute Sports performance

The dynamic qualities and performance of the Monster 1200 are emphasised with the S version, which accentuates the sporty essence with advanced components. Standard equipment includes a 48mm Öhlins fork and a single Öhlins shock, which are both fully adjustable. The braking system consists of two 330 mm Brembo discs paired with Brembo M50 monoblock calipers, the same as those on the Panigale. The Monster 1200 S is also equipped with the Ducati Quick Shift up/down (DQS) system as standard, 3-spoke 'Y' rims with an exclusive "S" graphic and a carbon fibre front mudguard, while the turning signals are LED and the front light is characterised by the DRL (Daytime Running Light), which guarantees immediate identification and also maximum safety during daytime use. The absolute sports attitude of the Monster 1200 S is also underlined by the brand new Liquid Concrete Grey colour scheme, polished pastel grey with black frame and wheels, flanking the classic Ducati Red version with red frame and black wheels.



Safety as standard



The continuous work that Ducati carries out in terms of design, research and development serves to ensure cutting edge bikes characterised by maximum active safety levels. A commitment that involves the definition of increasingly advanced technological systems to boost the rider's level of control, such as the Ducati Safety Pack (DSP) which, for the Monster 1200 and Monster 1200 S, includes Bosch 9.1MP ABS and Ducati Traction Control (DTC), both adjustable. The equipment that enhances the bike's dynamic performance in both braking and acceleration and, in this case, thanks to the Inertial Measurement Unit (IMU), also integrates the Bosch 9.1MP Cornering ABS function, which allows the system to also operate effectively through the turns.





Endless excitement

In designing each bike, Ducati constantly strives to ensure maximum reliability while reducing service costs. A commitment that has seen the intervals for the main Desmo Service, in which valve clearance is checked and adjusted if necessary, to be extended to 30,000 km for the Monster 1200. Even the simplest of checks, such as the Oil Service, are extended to 15,000 km or 12 months. A considerable interval for such exceptional performance engines, which only confirms the high quality standards adopted in terms of material selection and R&D processes. Ducati continuously invests in the technical training of its dealers. The specific skills offered by the official Ducati Service network ensure that all operations needed to keep every Ducati in perfect condition are thoroughly executed. While advanced equipment such as the Ducati Diagnosis System allows the software on each Ducati to be updated with the latest releases, ensuring that the electronics continue to perform at the maximum level.



* Equal to 18,000 miles



Always by
your side

732

Authorised Dealers and Service Points

91

WORLD COUNTRIES



One of Ducati's main goals is to offer every Ducatista the chance to enjoy unlimited and safe travel all over the world. To achieve this aim, Ducati offers a "fast delivery" original spares service, with delivery in 24/48 hours across 85% of its operating areas. With a distribution network that covers more than 90 countries, thanks to 766 official Dealers and Service Points*, choosing a Ducati means you can travel worry-free and in total freedom, wherever the road may take you, and count on support from our extensive Dealer network that ensures Ducati quality and professionalism is always close at hand.

*Information updated as of October 2017



More value to your passion

Ever **Red**

Extended Warranty

With Ever Red, the quality and reliability of the Ducati brand remain your inseparable travelling companions over time. Ever Red is the exclusive Ducati warranty extension programme. With its activation you can continue to be protected for 12 or 24 months beyond the expiration of the Ducati Warranty (24 months). Ever Red includes roadside assistance for the entire coverage period and no mileage limits. In this way you can ride as far as you desire, even abroad, enjoying your Ducati worry free.

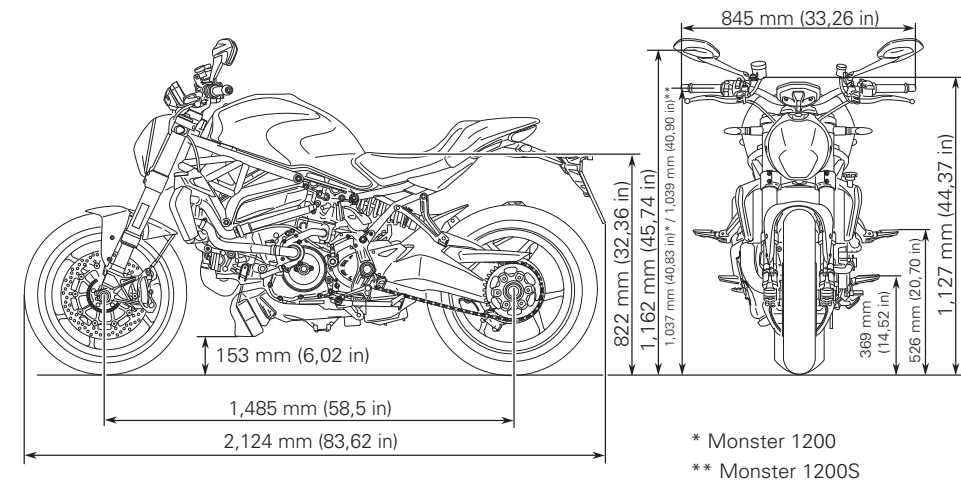
To find out if the Ever Red extension is available in your country and for further information contact your Ducati dealer or visit [ducati.com](https://www.ducati.com).



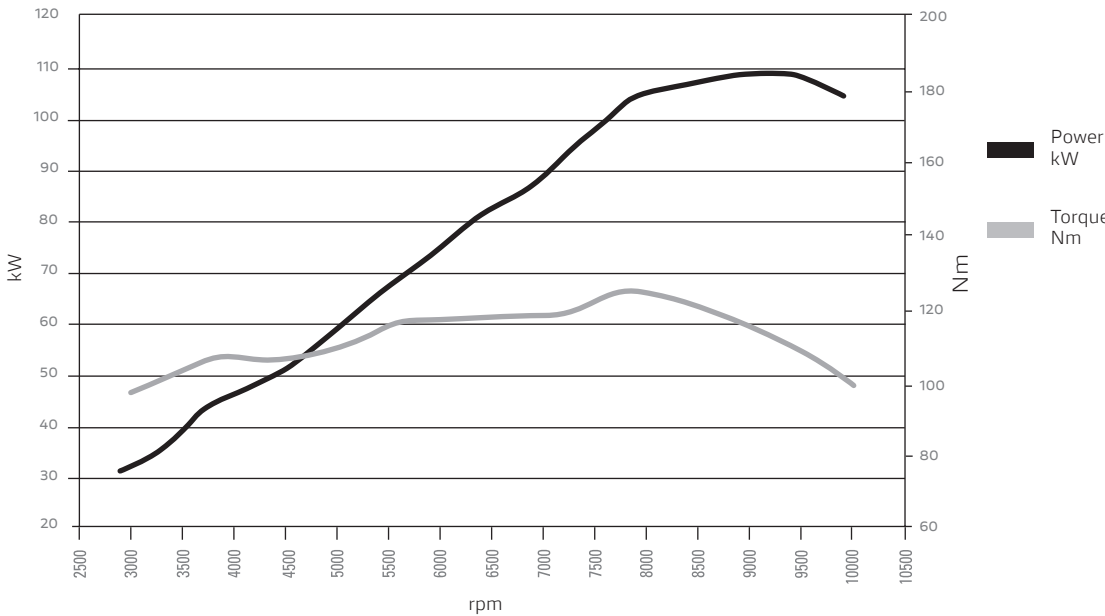
Technical data and gear

MONSTER 1200

Dimensions



Power and torque



Engine	
Type	Ducati Testastretta 11°, L-Twin, 4 Desmodromically actuated valves per cylinder, Dual spark, Liquid cooled
Displacement	1,198 cc (72.9 cu in)
Bore X Stroke	106 x 67.9 mm (4.17 x 2.67 in)
Compression ratio	13.0:1
Power*	147 hp (108 kW) @ 9,250 rpm
Torque*	124 Nm (91 lb-ft, 12.6 kgm) @ 7,750 rpm
Fuel injection	Electronic fuel injection system, Full ride-by-wire system, Øeq 56 mm oval throttle bodies
Exhaust	Lightweight 2-1-2 system with catalytic converter and two lambda probes, Twin stainless steel mufflers with aluminium covers and end caps
Transmission	
Gearbox	6 speed
Primary drive	Straight cut gears, ratio 1.84:1
Ratio	1=37/15 2=30/17 3=27/20 4=24/22 5=23/24 6=22/25
Final drive	Chain drive, front sprocket Z15, rear sprocket Z 41

Transmission	
Clutch	Slipper and self-servo wet multiplate clutch with hydraulic control
Chassis	
Frame	Tubular steel trellis frame attached to the cylinder heads
Front Suspension	Ø 43 mm fully adjustable usd fork
Front wheel	10-spoke light alloy, 3.50" x 17"
Front tyre	Pirelli Diablo Rosso III, 120/70 ZR17
Rear Suspension	Progressive linkage with monoshock, preload and rebound adjustable, Aluminium single-sided swingarm
Rear wheel	10-spoke light alloy, 6.00" x 17"
Rear tyre	Pirelli Diablo Rosso III, 190/55 ZR17
Wheel travel (front/rear)	130 mm/149 mm (5.12 in/5.87 in)
Front brake	2 x Ø 320mm semi-floating discs, radially mounted monobloc Brembo M4.32 callipers, 4-piston, radial pump with Bosch Cornering ABS as standard equipment
Rear brake	Ø 245 mm disc, 2-piston calliper with Bosch Cornering ABS as standard equipment
Instrumentation	Full-TFT colour display

Dimensions and weight	
Dry weight	187 kg (412 lb)
Wet weight	213 kg (470 lb)
Seat height	Adjustable 795 - 820 mm (31.30 - 32.28 in)
Wheelbase	1,485 mm (58.46 in)
Rake	23.3°
Trail	86.5 mm (3.41 in)
Fuel tank Capacity	16.5 l (4.36 US gal)
Number of seats	2
Standard equipment	
Riding Modes, Power Modes, Ducati Safety Pack (Bosch Cornering ABS + Ducati Traction Control), Ducati Wheelie Control (DWC), Ride by Wire (RbW), TFT color display, Passenger seat cover, LED position light and tail light, USB power socket. Predisposed for the anti-theft system, Ducati Multimedia System (DMS), Ducati Data Analyzer (DDA), and Ducati Quick Shift up/down (DQS)	
Warranty	
Warranty	24 months
Maintenance	
Maintenance service intervals	15,000 km (9,000 mi) / 12 months
Valve clearance check	30,000 km (18,000 mi)

Emissions & consumption**	
Standard	Euro 4
CO2 Emissions	119 g/km
Consumption	5.2 l/100 km



Equal to 18,000 miles

Indication of mileage at the first Desmo Service, or rather the first service during which valve clearance is checked and adjusted if necessary.

* The power/torque values indicated are measured using an engine dynamometer according to homologation regulation and they correspond to the homologated data, as quoted in the Bike Registration Document.

** Only for countries where Euro 4 standard applies.

MONSTER 1200

Body: Ducati Red
Frame: Ducati Red



MONSTER 1200 S

Monster 1200		Monster 1200 S
Ducati Quick Shift up/down (DQS)	Accessory	Standard equipment
Front suspension	Ø 43 mm fork	Ø 48 mm Öhlins fork
Front/Rear wheel	10-spoke	Y shaped 3-spoke with “S” graphics
Rear suspension	Monoshock, preload and rebound adjustable	Öhlins fully adjustable monoshock
Front brake	2 x Ø 320 mm discs, Brembo M4.32 callipers	2 x Ø 330 mm discs, Brembo M50 callipers
DRL	-	Standard equipment*
Side indicators	Lamp	LED*
Front mudguard	Plastic	Carbon fiber
Dry weight	187 kg (412 lb)	185 kg (408 lb)
Weight in running order	213 kg (470 lb)	211 kg (465 lb)

* Please check product availability with your Dealer



1 Fully adjustable Öhlins front and rear suspension



2 Headlight with Daytime Running Light (DRL)



3 Front brakes with Ø 330 mm discs and Brembo M50 radial monoblock callipers

MONSTER 1200 ^S

Body: Ducati Red
Frame: Ducati Red



Body: Liquid Concrete Grey
Frame: Black





Accessories

The perfect Monster for you

Versatility and also freedom to change. Whatever your customisation needs, it is easy with the Sport personalisation pack and the wide range of Ducati Performance accessories available. Sports exhausts, cast aluminium parts, billetted aluminium details, seats of different heights, equipment for travelling: details that make the Monster 1200 even more unique, adapting it to suit any requirements.

Try the online configurator and customise your new Ducati bike at configurator.ducati.com



Sport pack



Pair of LED turn indicators x2



Underseat aluminium number plate holder



Carbon ignition switch frame



Adhesive carbon tank protection



For more information about the accessories range, technical specifications and instructions, visit a Ducati Dealer or the Accessories section of the ducati.com site. Package components can also be purchased individually.

1



1

Complete racing exhaust system



2



3



2

Carbon racing silencers



3

Coolant pipes



This product is designed exclusively for race bikes ridden on a closed racetrack. Its use on public roads is forbidden by law.



1

 Carbon belt guards

M

2

 Carbon fibre front mudguard

M

3

 Carbon rear mudguard

M

4

 Carbon chain guard

M

5

 Carbon swingarm guard

M

6

 Carbon instrument cover

M



1

 Carbon heat guard for standard and racing manifolds

M

2

 Passenger grab handles

F

3

 Sport Headlight Fairing

LCG

4

 Smoked windscreen kit

F

5

 Number plate holder fastening cover pad

eye warning flag

6

 Brake fluid reservoir Clutch fluid reservoir.

black red A



1 Brake fluid reservoir
Clutch fluid reservoir.



2 Billet aluminium water pump cover



3 Aluminium rear-view mirror



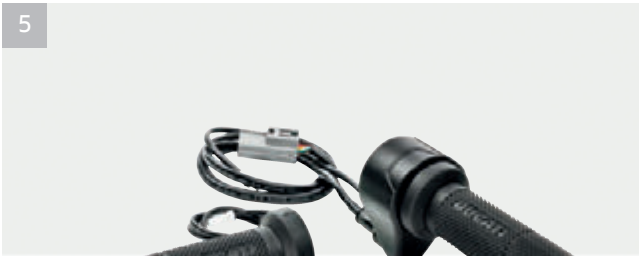
4 Billet aluminium rearview mirrors



5 Handlebar counterweights



6 Brake lever



1 Clutch lever



2 Set of footpegs



3 Öhlins adjustable steering damper

4 Ducati Quick Shift

5 Heated plug-&-play handgrips

6 Ducati Multimedia System



Other accessories for your Monster 1200

Ducati Performance dedicated anti-theft system

Tanklock® flange kit

For fastening pocket bag

Key to symbols

This product is intended for racing vehicles used only in closed-course competition. Operation on public roads is prohibited by law.

For racing use only. The product marked with this symbol can only be used on competition vehicles. Use outside a competition track of motorcycles equipped with this product is prohibited by law. Verify any further restrictions with the relevant race course. Motorcycles equipped with this accessory are prohibited from operating on public roads.

This accessory is not approved for road circulation.

Accessory type-approved for road use.

A

Anodized

M

Matt

F

Tinted

LCG

Liquid concrete gray

Silver

Black

Red

Gold

Right

Left



Apparel

Ducati Apparel Collection designed by *Drudi Performance*



Ducati Corse C3

Leather jacket

9810373_standard white-red
9810374_perforated white-red
9810407_standard black
9810408_perforated black

Ducati Corse tex C3

Textile jacket

9810377_man
9810378_woman

Company C2

Leather jacket

9810321_standard black
9810322_perforated black
9810323_standard red
9810324_perforated black woman

Redline B1

Preformed knapsack

981040452

Sport C2

Leather trousers

9810287_





Speed Evo C1

Leather jacket

9810436_standard black-red

9810437_perforated black-red

9810441_standard red-white-black

9810442_perforated red-white-black

Performance C2

Leather gloves

98104005_red

98104006_black

Ducati Checkmate

Full-face helmet

98104057_ECE

98104058_USA

98104059_JAP

Ducati Recon

Full-face helmet

98104054_ECE

98104055_USA

98104056_JAP



91750132ZE

Riding a motorcycle is the most exciting way to enjoy the road, and offering the utmost safety to the motorcyclist is Ducati's commitment. Ducati bikes are increasingly easy to handle, reliable and better equipped to guarantee maximum safety and enhance riding pleasure. Technical clothing is made with even more advanced materials for adequate protection and increased visibility. The safety of motorcyclists is Ducati's commitment. For more information visit the safety section of the Ducati site (www.ducati.com).

WARNING: The photos and technical information in this catalogue may refer to prototypes subject to modifications during production and are purely for illustration and reference purposes, and are therefore not binding on Ducati Motor Holding S.p.A. Sole Shareholder Company - Company subject to the direction and coordination of AUDI AG ("Ducati"). Ducati cannot be held responsible for any print and/or translation errors. This catalogue is transnational and therefore some products may not be available and/or their features may vary in accordance with local laws. Not all colours and versions are available in each country. Ducati reserves the right to make changes and improvements to any product without obligation of prior notice or to make such changes to products already sold. Further characteristics of the products are contained in the owner's manuals. The products represented are not definitive versions and are therefore subject to significant changes at Ducati's discretion without prior notice. The photographs published in this catalogue show only professional riders under controlled street conditions. Do not attempt to imitate such riding behaviour as it could be dangerous for you or other people on the road. This catalogue, including but not limited to the trademarks, logos, texts, images, graphics and table of contents herein, constitute Ducati intellectual property, or in any event Ducati has the right to reproduce it; any reproduction, modification or other whole or partial use of the catalogue or its contents, including publication on the Internet without the prior written consent of Ducati, is prohibited.


Actual fuel consumption may vary based on many factors, including but not limited to riding style, maintenance performed, weather conditions, surface characteristics, tyre pressure, load, weight of the rider and the passenger, accessories.


Ducati indicates the dry weight of the motorcycle excluding battery, lubricants and coolants for liquid-cooled models. The weights in running order are considered with all operating fluids, standard equipment and the fuel tank filled to 90% of its useful capacity (UE regulation no. 168/2013). For more information visit www.ducati.com. Printed in November 2018.



DUCATI

MONSTER 1200

Developed with
 **ADVANCE**
ADVANCED OIL

Technical partner
 **PIRELLI**

ducati.com