

Big 3 Automotive LLC

1669 W130th St #301
 Hinckley, OH. 44233
 Phone: 330-220-3278 Fax: 330- -

INVOICE

9140

INVOICE

Printed Date: 05/11/2022 Work Completed: 10/08/2021



1968 Chevrolet - Camaro RS - 427

Lic # :

Odometer In : 0



VIN # : 124378N457200

Part Description	Qty	Sale	Ext	Labor Description	Ext
New 6.0l Engine (LQ9/L92 heads)	1.00	4,500.00	4,500.00	387whp	
Built 4L60E	1.00	3,850.00	3,850.00	compression/leakdown testing	260.00
Oil Filter	1.00	9.99	9.99	check over vehicle	n/c
Oil qts	6.00	7.99	47.94	Dyno Tune	650.00
Oil pan gasket set	1.00	36.89	36.89	Remove Old Engine	650.00
TERMINATOR X MAX 24X/1X EV1 LS MPFI KIT WITH TRANSMISSION CONTROL	1.00	1,462.95	1,462.95	Install Cam Kit and Oil Pan	780.00
HOOKER BLACKHEART HEAVY DUTY CLAMSHELL ENGINE MOUNTS	2.00	23.07	46.14	Install Headers	390.00
HOOKER BLACKHEART POLYURETHANE ENGINE MOUNT INSERT - RED	2.00	27.76	55.52	Install Fuel System/run lines	650.00
ACDelco GM OE LS3 Intake Manifolds	1.00	350.00	350.00	Install radiator + overflow, fabricate hard radiator lines	390.00
ACDelco Fuel Rails	1.00	149.50	149.50	R&R Transmission, patch transmission tunnel	845.00
COMP HI ACC BKT KIT, LS/LT, W/R4-BLACK	1.00	1,552.95	1,552.95	Install Accessories, and remove AC	780.00
HI ACC BKT INSTALL KIT, LS STANDARD-NATU	1.00	68.33	68.33	Install Trunion Upgrade	130.00
Corvette Balancer	1.00	206.99	206.99	Install New Engine	1,300.00
US Motor Works Mechanical Water Pumps	1.00	169.29	169.29	Wire Engine	1,500.00
Custom Torque Converter	1.00	725.00	725.00	Install/Adapt Exhaust System	585.00
OIL DIPSTK,GM LS1	1.00	42.80	42.80	Make Cold Air Intake	227.50
OIL PAN, LS RETROFIT	1.00	394.95	394.95	Install Throttle Cable and Pedal	195.00
HOOKER BLACKHEART LONG TUBE HEADERS - CERAMIC COATED	1.00	915.95	915.95	R&R Idler Arm	130.00
ARP Pro Series Flexplate Bolt Kits	1.00	32.37	32.37	Change Brake Pedal	325.00
Summit Racing® SFI-Approved Flexplates	1.00	89.99	89.99	Install and Wire Neutral Safety Switch.	195.00
Stage 3 Cam Kit	1.00	699.99	699.99	Install and calibrate Dakota Digital dash	910.00
Summit Racing® LS Series Retrofit Trunion Kits SUM-141560	1.00	159.99	159.99	Fix Horn (replace them, the fuse, and fix button)	195.00
Starter	1.00	128.00	128.00	Install and Plumb Trans Cooler	227.50
Heater Hose Line and Fittings	1.00	140.00	140.00	Install shifter + automatic center console assy	832.00
Hose Clamps	12.00	2.40	28.80	R&R Fuel tank, repair sending unit wiring (wired incorrectly elsewhere)	390.00
Wiring Materials	1.00	50.00	50.00	Remove unneeded items underhood (Sniper harness, ignition box, coil, wiper fluid tank/hoses, pwr steering hose/cooler)	175.50
Custom Radiator Hose Parts	1.00	136.00	136.00	Other	n/c
PICO Wiring 0950PT - Pico Electrical Fuse Holders	2.00	4.99	9.98	install headlights	390.00
Air Intake Temp Sensor	1.00	19.95	19.95	Four wheel alignment	99.95
Coolant Temp Sensor	1.00	35.00	35.00	Four wheel alignment	
Engine Coolant	3.00	19.96	59.88	00089302 engine serial#	

Big 3 Automotive LLC

1669 W130th St #301

Hinckley, OH. 44233

Phone: 330-220-3278 Fax: 330- -

INVOICE**9140****INVOICE**

Printed Date: 05/11/2022

Work Completed: 10/08/2021

1968 Chevrolet - Camaro RS - 427

Lic # :

Odometer In : 0

VIN # : 124378N457200

Part Description	Qty	Sale	Ext	Labor Description	Ext
PS Fluid	1.00	5.98	5.98		
Misc Bolts and Materials	1.00	85.00	85.00		
Crank sensor	1.00	100.01	100.01		
Cam sensor	1.00	54.22	54.22		
Fitting, Hose End, Socketless, Straight, -6 AN Hose to Female -6 AN, Aluminum, Black	10.00	4.61	46.10		
-6 MALE TO 3/4-16 (AN8) O-RING BLACK	3.00	6.93	20.79		
90 DEG SWIVEL HOSE END -6 BLACK	2.00	16.24	32.48		
-8 AN Port Plug with O-Ring Seal, Black Anodized Aluminum	1.00	3.42	3.42		
ST -6 MALE TO 3/8 IN. NPT ADAPTER BLACK	1.00	3.42	3.42		
Power steering hose	1.00	37.88	37.88		
-6 90 DEG HOSE END PUSH-ON BLACK	5.00	11.60	58.00		
160-Thermostat	1.00	25.07	25.07		
Coolant Bypass Seals, Rubber/Steel, Buick, Cadillac, Chevy, GMC, Hummer, Pontiac, Set	1.00	19.99	19.99		
Crank bolt	1.00	7.93	7.93		
Plug Fittings, Flat Head, Bolt-on, Billet Aluminum, Natural, Designed To Plug the MAP Sensor Hole On An LT4 Supercharger,	1.00	22.47	22.47		
Starter Bolts, Hex, Chevy, Small Block LS, Set of 3	1.00	14.99	14.99		
Fittings, Transmission Line Adapters, Aluminum, Natural, -6 AN Male Threads, 1/4	1.00	14.99	14.99		
Engine coolant crossover	1.00	59.56	59.56		
Taylor spark plug wire set	1.00	40.93	40.93		
Throttle Body, Sniper LS, MPI, 92mm, Billet Aluminum, Black Anodized, Chevy LS, Each	1.00	201.95	201.95		
Throttle bracket	1.00	40.56	40.56		
Header bolts	1.00	12.11	12.11		
P/S Reservoir kit	1.00	121.95	121.95		
Fuel Filter/Regulator, -6 AN, Steel, Natural, 5 micron Filter, Chevy, 5.7L, LS, Each	1.00	102.96	102.96		
Yoke, 4L80E, TH400, Chromeoly, 32-Spline, Spicer 1350 Joint Style, CL to End Length 5.5 in. Length, OAL 6.370 in.	1.00	173.33	173.33		

Big 3 Automotive LLC

1669 W130th St #301

Hinckley, OH. 44233

Phone: 330-220-3278 Fax: 330- -

INVOICE**9140****INVOICE**

Printed Date: 05/11/2022

Work Completed: 10/08/2021

1968 Chevrolet - Camaro RS - 427

Lic # :

Odometer In : 0

VIN # : 124378N457200

Part Description	Qty	Sale	Ext	Labor Description	Ext
PICO Wiring 0950PT - Pico Electrical Fuse Holders	2.00	10.20	20.40		
30A/40A Relay Size: 5 PIN	2.00	0.00	n/c		
Fuse kit	1.00	19.19	19.19		
Crankshaft Adapter Sleeve, Steel, 1.700 in. Crank Pilot Diameter, Chevy, Each	1.00	29.33	29.33		
ST. SWIVEL HOSE END -6 BLACK Black Satin Anodized Finish.	4.00	6.93	27.72		
Driveshaft	1.00	508.95	508.95		
FID 525cc injectors	1.00	500.00	500.00		
NGK spark plugs	8.00	3.49	27.92		
Header gaskets	1.00	19.99	19.99		
Fluid Cooler, Engine, Tube-Fin Type, Copper/Aluminum, 10 in. x 14.5 in. x 4 in., -6 AN NPT, Inlet, Outlet	1.00	64.73	64.73		
Hose, Braided Stainless Steel, -6 AN, 20 ft. Length, Each	1.00	80.99	80.99		
Temp sensor connector	1.00	16.09	16.09		
Tubing, U-bend Style, Aluminum, Polished, 1.50 in. Diameter, 2.25 in. Radius, 4.00 in. Length, Each	1.00	42.80	42.80		
Transmission lines	1.00	50.11	50.11		
Fusible link	1.00	9.32	9.32		
Fusible link	1.00	6.39	6.39		
U-joint	1.00	24.35	24.35		
Weld in bung	1.00	10.10	10.10		
Air filter	1.00	75.99	75.99		
Intake Material	1.00	70.00	70.00		
Used Coil Packs	1.00	175.00	175.00		
Black Throttle Cable	1.00	70.00	70.00		
CAN EXTENSION HARNESS, 4FT	1.00	39.59	39.59		
Dakota Digital BIM-012-HLLY - Dakota Digital EFI Interface Modules	1.00	99.00	99.00		
Dakota Digital HDX Direct-Fit Analog Gauge Systems	1.00	1,230.25	1,230.25		
transmission dipstick	1.00	112.95	112.95		
Console shift plate - auto	1.00	52.79	52.79		
Shiftworks Automatic Transmission Floor Mount Shifter	1.00	353.99	353.99		
Brake Pedal Assy (auto)	1.00	46.99	46.99		
Idler arm	1.00	81.48	81.48		
Power Steering Pulley	1.00	24.99	24.99		
Billet Specialties Pedal Pad	1.00	62.99	62.99		
Twist on breather	1.00	49.95	49.95		

Big 3 Automotive LLC

1669 W130th St #301

Hinckley, OH. 44233

Phone: 330-220-3278 Fax: 330- -

INVOICE**9140****INVOICE**

Printed Date: 05/11/2022

Work Completed: 10/08/2021

1968 Chevrolet - Camaro RS - 427

Lic # :

Odometer In : 0

VIN # : 124378N457200

Part Description	Qty	Sale	Ext	Labor Description	Ext
Fitting, Push-On EFI Adapter, Straight, Male -6 AN, Female Quick-Connect 3/8 in., Black Anodized, Each	1.00	15.99	15.99		
Firewall Grommet, Rubber, 3.0 in. O.D., 0.625 in. I.D., Each	2.00	15.99	31.98		
console shifter plate rubber seals w/ inserts	1.00	28.50	28.50		
console forward plate gauge brackets	1.00	11.36	11.36		
console shift plate lamp housing backing plate	1.00	17.07	17.07		
console shift plate lens backing plate	1.00	12.79	12.79		
console shift plate mounting screws set	1.00	4.21	4.21		
center console shift plate surround	1.00	38.50	38.50		
hydraulic connections sleeves/fittings	1.00	61.09	61.09		
Billet Gas Pedal Assembly	1.00	161.99	161.99		
radiator	1.00	206.99	206.99		
Aluminum Water Necks	2.00	31.99	63.98		
LS 1/2 TO LS3 MAP ADAPTER	1.00	32.48	32.48		
Radiator Petcock	1.00	6.35	6.35		
dual horn assy	1.00	34.21	34.21		
3x8" radiator coolant overflow tank	1.00	37.68	37.68		
ST. SWIVEL HOSE END -8 BLACK	1.00	9.25	9.25		
FEMALE SWIVEL -6 BLACK	1.00	7.28	7.28		
3" Lap joint band clamp	2.00	8.99	17.98		
Auto Shifter Console Plate	1.00	62.49	62.49		
Serp Belt	1.00	39.56	39.56		
Retainers-Valve	1.00	52.88	52.88		
B3R Stainless keychain	1.00	10.00	10.00		
TShirt	1.00	20.00	20.00		
Hoodies Regular Sizes	1.00	40.00	40.00		
Shop Supplies			150.00		

Big 3 Automotive LLC
 1669 W130th St #301
 Hinckley, OH. 44233
 Phone: 330-220-3278 Fax: 330- -

INVOICE

9140

INVOICE

Printed Date: 05/11/2022 Work Completed: 10/08/2021



1968 Chevrolet - Camaro RS - 427

Lic # :

Odometer In : 0



VIN # : 124378N457200

Part Description	Qty	Sale	Ext	Labor Description	Ext
------------------	-----	------	-----	-------------------	-----

[Payments - Check (#219) - \$15,000.00, Visa - \$7,000.00, MasterCard - \$14,767.67]

Thank You For Your Business

I authorize the above repair work to be done along with the necessary material and hereby grant your employees permission to operate the vehicle herein described on street or elsewhere for the purpose to testing. An express mechanic's lien is hereby acknowledged on above vehicle to secure the amount of repairs thereto. Big 3 Automotive LLC implies no warranty on labor or parts unless otherwise stated. We reserve the right to refuse service to anyone for any reason. You have ten business days to have the vehicle picked up and final invoice paid in full or we will charge a storage fee of no less then \$20 per day. Vehicles left for more then two weeks will be considered abandoned and we will take appropriate actions to file for title.

*INVOICE MUST BE PAID IN FULL BEFORE VEHICLE OR PARTS WILL BE RELEASED.

*BIG 3 RACING IS NOT RESPONSIBLE FOR LOSS OR DAMAGE TO CARS OR ARTICLES LEFT IN CARS IN CASE OF FIRE, THEFT OR ANY OTHER CAUSE.

ANY PARTS LEFT IN OUR POSSESSION WILL BE DISPOSED OF AFTER 15 DAYS

Vehicle Received: 10/8/2021

Customer Number : 6146

Labor:	13,102.50
Parts:	22,660.18
Sublet:	99.95
Sub:	35,862.63
Tax:	905.04
Total:	\$36,767.67
Bal Due:	\$0.00

Signature _____ Date _____



6.0 Liter Gen III Performance long block Specifications

Specifications part number: 19370164

Thank you for choosing Chevrolet Performance as your high performance source. Chevrolet Performance is committed to providing proven, innovative performance technology that is truly... more than just power. Chevrolet Performance Parts are engineered, developed and tested to exceed your expectations for fit and function. Please refer to our catalog for the Chevrolet Performance Authorized Center nearest you or visit our website at www.chevroletperformance.com.

This publication provides general information on components and procedures which may be useful when installing or servicing your crate long block engine. Please read this entire publication before starting work.

This crate long block engine is assembled using brand new, premium quality components. Due to the wide range of small block applications, if you are retrofitting a previous small block application, you may encounter installation differences between your crate engine assembly and the previous version. These differences may require modifications or additional components not included with the engine, including cooling, fuel, electrical, and exhaust systems. Some fabrication work may be required.

It is not the intent of this specification to replace the comprehensive and detailed service practices explained in the GM service manuals.

For information about warranty coverage, please contact your local Chevrolet Performance dealer. The long block consists of a mixture of Gen III and Gen IV engine parts. For service parts or service information please reference to the service manual for a 2004-2006 Escalade full size truck (LQ9 engine) with the exception of the cylinder heads including rocker arms which are from a 2013 Corvette (LS3 engine) and a 2004 Corvette (LS6 engine) camshaft.

Observe all safety precautions and warnings in the service manuals when installing a crate engine in any vehicle. Wear eye protection and appropriate protective clothing. When working under or around the vehicle support it securely with jack stands. Use only the proper tools.

Exercise extreme caution when working with flammable, corrosive, and hazardous liquids and materials. Some procedures require special equipment and skills. If you do not have the appropriate training, expertise, and tools to perform any part of this conversion safely, this work should be done by a professional.

Legal and Emissions Information

This publication is intended to provide information about the crate engine and related components. This manual also describes procedures and modifications that may be useful during the installation of the performance Gen III crate long block engine. It is not intended to replace the comprehensive service manuals and parts catalogs which cover Chevrolet Performance engines and components. Rather, it is designed to provide supplemental information in areas of interest to "do-it-yourself" enthusiasts and mechanics. This publication pertains to engines and vehicles which are used off the public highways except where specifically noted otherwise. Federal law restricts the removal of any part of a federally required emission control system on motor vehicles. Further, many states have enacted laws which prohibit tampering with or modifying any required emission or noise control system.

Special Parts Notice

Vehicles which are not operated on public highways are generally exempt from most regulations, as are some special interest and pre-emission vehicles. The reader is strongly urged to check all applicable local and state laws. Many of the parts described or listed in this manual are merchandised for off-highway application only, and are tagged with the "Special Parts Notice" reproduced here:



Congratulations on the purchase of your GM Product. Please take the time to register your purchase using the purchase registration data found below by visiting our website at

<http://www.genuinegmparts.com/resources/product-registration>

Thank you for your purchase.

French

Nous vous félicitations pour l'achat de votre nouveau produit GM. Veuillez prendre le temps d'enregistrer votre achat en utilisant les données d'enregistrement de fachat que vous trouverez en visitant notre site Web à l'adresse ci-dessous

<http://www.genuinegmparts.com/resources/product-registration>

Nous vous remercions de votre achat.

Spanish

Felicidades por la compra de su Producto GM. Por favor tome un tiempo para registrar su compra con los datos de registro de compra que se encuentran a continuación visitando nuestra página de internet en

<http://www.genuinegmparts.com/resources/product-registration>

Gracias por su compra.

AUTHORIZATION CODE:
CODE D'AUTORISATION:
CÓDIGO DE AUTORIZACIÓN:

P/N 19370163
S/N 00089302
Mfg 08/07/20

08037000
BCH5926705 NFM

GM GENUINE PARTS
Detroit, MI 48265
©2020 GM LLC
All Rights Reserved



Holley Accessory Drive System

Part Number 20-136

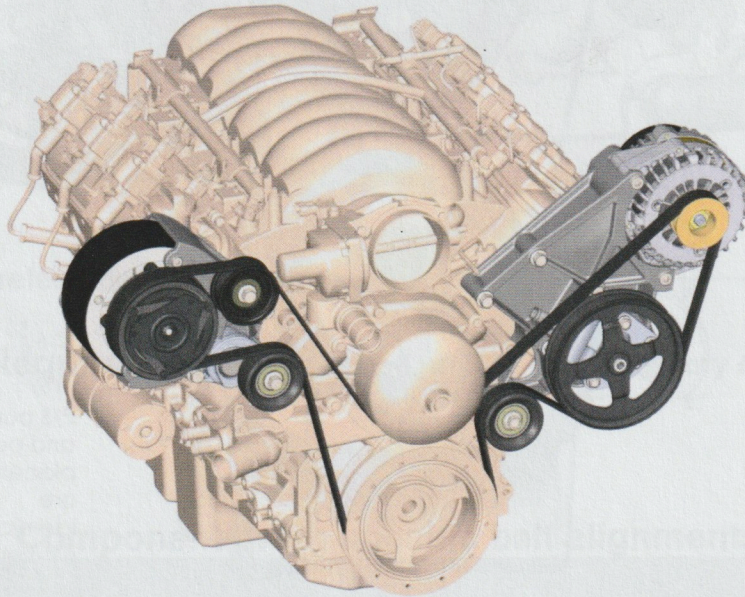


Table of Contents

Introduction:	2
Crank Pulley Belt Alignment Determination:	3
Overview of Parts Required (but NOT included with 20-136 accessory drive system):	3
Water Pump Determination:	4
Parts List:	7
Assembly Instructions	9
Driver's Side Bracket Installation:	9
Power Steering Pump Installation:	10
Idler Pulley Installation (position options):	11
Power Steering Pump Pulleys:	12
Small Diameter Pulley:	12
P/S Pulley & Alternator Installation:	13
Passenger's Side Bracket Installation:	14
A/C Compressor Installation:	15
Idler & Tensioner Installation:	16
Belt Routing:	17
Power Steering Pump Reservoir Options:	18

TERMINATOR[™]X

TERMINATOR[™]X MAX

MPFI FUEL INJECTION SYSTEM



PART NUMBERS

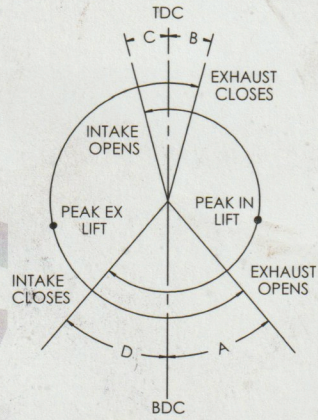
550-903 thru 905, 550-916 thru 918 & 550-926 thru 931

INSTALLATION & TUNING MANUAL – 199R11760



LS3 STAGE III GEN III & IV LS APPLICATIONS

INTAKE DURATION @ .006"	282°	INTAKE C/L	109°
EXHAUST DURATION @ .006"	300°	EXHAUST C/L	117°
INTAKE DURATION @ .050"	229°	LSA	113°
EXHAUST DURATION @ .050"	244°	A - EVO @ .050"	59° BBDC
LOBE LIFT INTAKE	0.371"	B - EVC @ .050"	5° ATDC
LOBE LIFT EXHAUST	0.362"	C - IVO @ .050"	5.5° BTDC
ROCKER RATIO	1.7	D - IVC @ .050	43.5° ABDC
NET LIFT INTAKE	0.631"	LASH	N/A
NET LIFT EXHAUST	0.615"	32944134R1	
LOBE LIFT AT T.D.C.	0.065"		



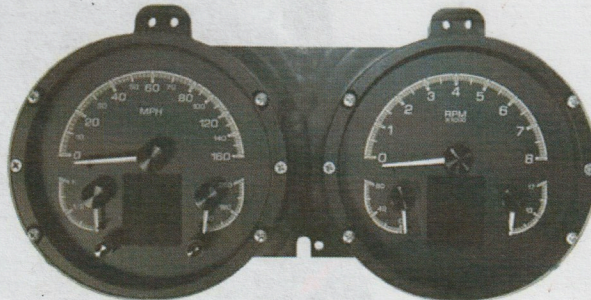


HDX-67C-CAM

Dakota Digital HDX Instrument Installation
For 1967-'68 Chevrolet Camaro and Pontiac Firebird

Your new HDX-67C-CAM kit includes:

HDX Display



Universal Sender
Pack



Buzzer



Installation Manuals



Main Harness



Interconnect
Harness



Control Box

Foam Tape



Installation

1. Remove the stock gauge cluster from the dash.

