

1974 F 250

Dyno tune 3 mos ago

1. New Radiator more 1.5 years
2. Heater Core 2.5 years
3. Hoses 1.5
- 4 Belts
5. Sanderson Headers 3 mos ago
6. Exhaust system 3 mos
7. Mini Start 3 mos
8. Transmission October
9. Clutch Assembly 2.5 mos
10. wheels tires 3 years ago
11. Edelbrock 3-4
12. Pertronix 2.5 - 3
Cap wires
13. Gas tank Acid dipped 3
14. New u joints and 2 Drive shafts
15. New Gear oil Trans Trans Case Diffs
16. Rubber Floor Mat
17. New Fuel Pump 1 year
- 18 New Motor mounts 3 mos

ions.
se,
lose,

Ford
shed
ngle

GUARANTEE AUTOMOTIVE
 1203 HIGHTWAY 620 N
 LAWTON, TX 74734
 (512) 266-0777

Bank ID: 5429
 Merchant ID: 4740
 Term ID: 002

ive
 20 N.

Invoice

Date	Invoice #
12/21/2021	7445

Phone Order

XXXXXXXXXXXX4124

VISA

Entry Method: Manual

Total: \$ 1,681.04

12/22/21

11:18:52

Inv #: 000002

Appr Code: 013601

Apprvd: Online

Batch#: 356001

CVV2 Code: MATCH M

Retrieval Ref #: 00100001

Customer Copy

THANK YOU!

ENCRYPTED TRANSACTION

Mileage	Year / Model
41305	74 F250

Quantity	Description	Amount
	CHECK BRAKES - METAL TO METAL - PULLED HARD WHEN STOPPING FAST	
10.5	SHOP LABOR, DIAGNOSE, REPLACED DEFECTIVE PASSENGER REAR WHEEL BEARING AND WHEEL SEAL, REPLACED REAR BRAKE DRUM HARDWARE DUE TO DAMAGED SPRING. CLEAN AND ADJUST REAR SHOES AND DRUMS. REPLACED PASSENGER FRONT LEAKING WHEEL CYLINDER, REPLACED FRONT BRAKE SHOES AND TURN FRONT BRAKE DRUMS. BLEED ALL 4 BRAKES, FILL WITH FLUID. REBUILD CARBURETOR.	1,365.00
1	BRAKE FLUID	
1	WHEEL BEARING, PASSENGER REAR	30.00T
1	WHEEL SEAL, PASSENGER REAR	38.66T
1	BRAKE DRUM HARDWARE KIT	13.24T
1	WHEEL CYLINDER, PASSENGER FRONT	24.06T
1	BRAKE SHOES, FRONT	33.88T
1	CARBURETOR KIT	65.69T
	Sales Tax	86.42T
		24.09

Thank you for your business.

Total

\$1,681.04

Web Site

www.guaranteeautomotive.com

"CONCOURSE QUALITY, HOBBYIST PRICE"



www.martiauto.com
13238 W Butler Drive
El Mirage, AZ 85335
Phone (623) 935-2558
Fax (623) 935-2579



Proud to display this symbol

THE 1974 F-SERIES TRUCK Of the

688,136 1974 F-Series Trucks,
35,263 were F-250 4x4 Pickup Trucks. Of them,
33,950 came with 360-2V Engines. Of those,
22,878 had 4-Speed New Process Manual Transmissions.
88 of them were painted Ginger Glow, of which
39 had Ginger Knit Vinyl Custom Bench Seats. Of those,
24 came with 4.10 Dana 60 Conventional Rear Axles.
11 of these were ordered with Dana 60 Front Axles.
3 of them had Reduced Noise Exhaust Systems. Of those,
1 had an Evaporative Emission System.
F26YRU06939 is that F-Series Truck.

Kevin Monte

The material contained in this report is copyrighted. The production data may not be used without written permission of Ford Motor Company and Marti Auto Works. The data is not available from other sources, so the appearance of it in published form by other authors or publishers without said written permission will result in prosecution under applicable laws. Single statistics may be quoted when accompanied by the statement, "Statistic courtesy of Marti Auto Works and copyrighted."

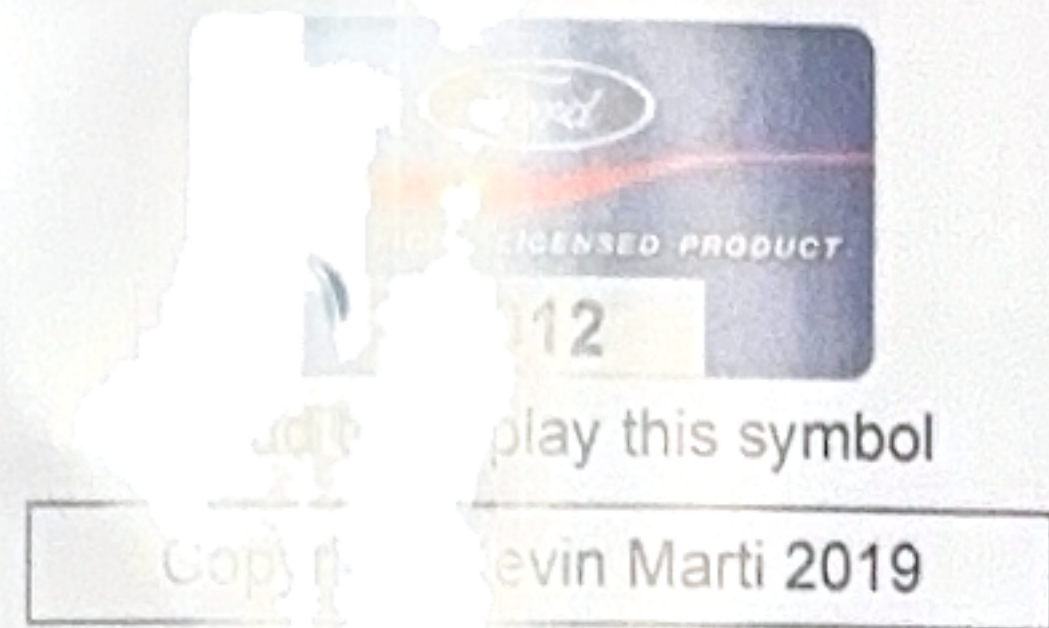
For Mustang, Thunderbird, Cougar, Falcon, Fairlane, Lincoln, Torino, and other Ford Products from 1950-2014

"CONCOURSE QUALITY, HOBBYIST PRICE"

Marti Auto Works

www.martiauto.com
13238 W Butler Drive
El Mirage, AZ 85335
Phone (623) 935-2558
Fax (623) 935-2579

DELUXE MARTI REPORT



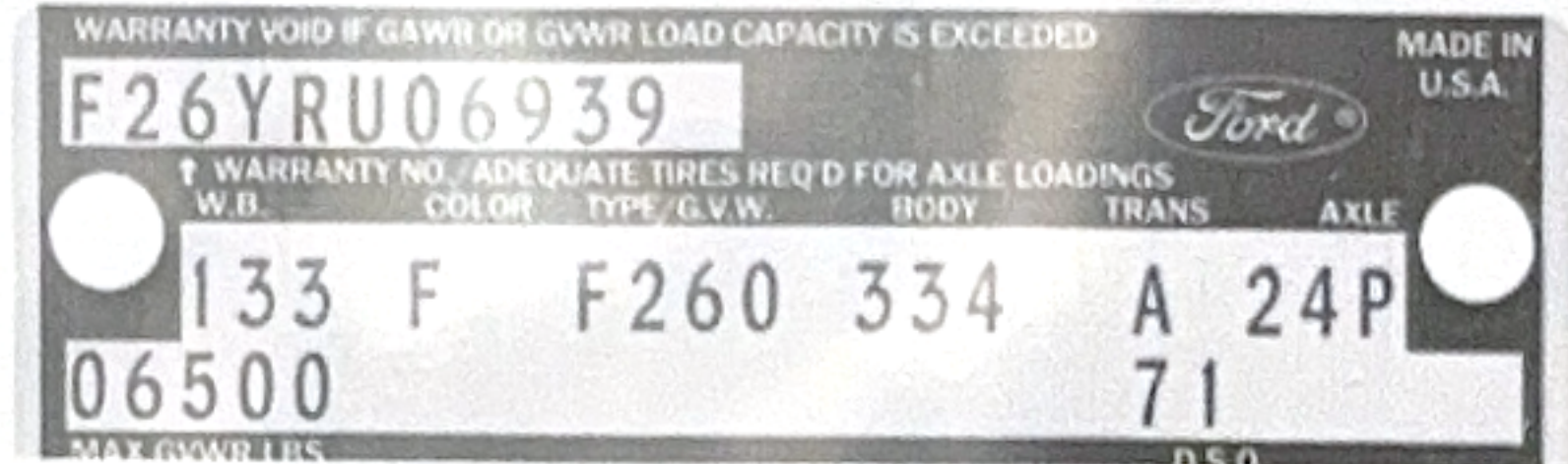
Thank you for your interest in our services. We have determined the following information for your vehicle from the Ford Database we have:

12345678901234567890123456789012345678901234567890123456789012345678901234567890
F26YRU06939133F 4330 2 25C1890 6C6E34 A24P42 1 X6 HG H3 71C0432 C

DOOR DATA PLATE INFORMATION

Serial Number **F26YRU06939**
F26 F-250 4x4 Pickup Truck
Y 360-2V Engine
R Built at San Jose
U06939 Serial Number of this Ford Truck scheduled for production at San Jose

133 Wheelbase (inches)
F Ginger Glow Paint, Ford #5425-A
F260 F-250 4x4 Pickup Truck 6500 Lb. GVW
334 Ginger Knit Vinyl Custom Bench Seat / Styleside
A 4-Speed New Process Manual Transmission
24P 4.10 Dana 60 Conventional Rear Axle with Dana 60 Front Axle&Power Steering
06500 Gross Vehicle Weight in Pounds
71 Los Angeles DSO (District Sales Office)



IMPORTANT DATES

ORDER RECEIVED: 03/06/74
CAR SERIALIZED: 03/07/74
BUCKED: 03/15/74
SCHEDULED FOR BUILD: 03/25/74
ACTUALLY BUILT: 03/19/74
RELEASED: 05/06/74
SOLD: 05/19/74

ORDER TYPE: STOCK
DSO ITEM #: 1890
DEALER #: 71C043
VISTA FORD
21501 VENTURA BLVD
WOODLAND HILLS CA 91364

STATISTICS

Your vehicle was one of:
162 With this Paint Code
63 With these Paint/Trim Codes
22,878 With these Engine/Transmission Codes
1,359 Ordered from this DSO
26,616 With Custom Package
For the 1974 F-250 4x4 Pickup Truck

Your vehicle was equipped with the following features:

- Custom Package
- Ammeter and Oil Pressure Gauges
- Evaporative Emission System
- Power Steering
- Dana 60 Front Axle
- 8.00x16.5-8 Ply Rated Black Sidewall Tires
- Spare Tire & Wheel
- Chrome Western Swing-Lock Low Mount Mirrors
- Power Brake Booster
- Vinyl Bodyside Moldings
- Reduced Noise Exhaust System
- AM Radio
- Cigar Lighter
- Super Cooling Radiator
- Rear Step Bumper

Your vehicle was actually produced on March 19, 1974 -- six days ahead of schedule.

Kevin Marti
Kevin Marti

TEXAS HITCH & TRUCK
9099 RESEARCH BLVD
AUSTIN, TX 78758

SALE

MID: 1320 Store: 4616 Term: 3101
Batch #: 020 REF#: 00000004
11/26/19 RRN: 933017206458
AVS: ZIP MATCH 11:38:47 CVC: H
Trans ID: 589330635287265
APPR CODE: 054441
VISA *****5736 Manual CNP

\$270.63

APPROVED

CUSTOMER COPY
CLASS 3 HITCH



REIPT

texashitch@gmail.com
http://www.texashitch.com

1974 F
250

SALES # 356042
DATE 11/26/2019

QTY	RATE	AMOUNT
1	250.00	250.00T

90 DAY WARRANTY ON LABOR
NO REFUNDS ON INSTALLED ITEMS
NO REFUNDS ON ELECTRICAL OR LOCKS
NO REFUNDS ON GIFT CERTIFICATES
ALL RETURNED ITEMS SUBJECT TO 20% RESTOCKING FEE

SUBTOTAL 250.00
TAX 20.63
TOTAL 270.63
AMOUNT RECEIVED 270.63
BALANCE DUE **\$0.00**

FORD TRUCKS

TRUCK



MTL CTL AAD-8502-T
MAY 1973

PRINTED
IN USA

ROTATION
NUMBER

SERIAL NUMBER

TRUCK LIFE

WHEEL
BASE

065 F26YRU06939013340F3AA71

SPECIAL
ORDER
DSO
FSO
PTO

SCHEDULE
DATE

25 C46AAS

ENGINE		TRANSMISSION		AXLE		SPRINGS		SHOCKS		SPEED O GEARS		BRAKES		FUEL		FUEL TANKS	
ENGINE	TRANSMISSION	FRONT	REAR	FRONT	REAR	FRONT	REAR	FRONT	REAR	DRIVE	DRIVEN	POWER STRG	DUAL EXHAUST	COLD START AID	BELENDER	CAPACITY	POSITION
FYA	424D	SS	2P	X	X												

TIRES		SEATS		ELECTRICAL		LIGHTS		MIRRORS	
CODE	WHITE	TUBE TYPE	REAR	C12	C13	DELETE	HI OUTPUT	AIR CONDITION	AIR CLEANER
42	S								

WHEELS		SPINDLES		PACKAGES		BELTS	
TYPE	FRONT	REAR	FRONT	REAR	DELETE	D34	HARNESSES

RADIATOR HOSES		AIR CLEANER (9600)		CONTROL PUNCHES	
ENGINE	RADIATOR (8005)	PREFIX	SUFFIX	PREFIX	SUFFIX
46614L	02TAATA	2TAVAD	2TAF	D4TF	AB

TRANSMISSION		FRONT AXLE		REAR AXLE		DRIVESHAFT (4602)		COUPLING (4817)	
PREFIX	BASE	SUFFIX	PREFIX	RH BASE	LH SUFFIX	PREFIX	SUFFIX	PREFIX	SUFFIX
3N30C			D325F	D785R		YB	ZB	D2TA	AHA

FRONT SHOCKS		REAR SHOCKS		FRAME (5005)		FRONT TIRES		REAR TIRES			
PREFIX	BASE	SUFFIX	PREFIX	BASE	SUFFIX	SIZE	PLY	SIZE	PLY		
D2TF	45BB		3TF	80AA		D4TAD	E800	1.65	8800	1.65	8T

STEERING COLUMN		STEERING ASSEMBLY		STEERING WHEEL (3600)		SPEEDO-DRIVEN		SPEEDO-DRIVE	
PREFIX	BASE	SUFFIX	PREFIX	BASE	SUFFIX	PREFIX	BASE	SUFF	PREFIX
4TA35	GA4AA		C7TA	3504		H04TAB	31AA	40A271	A

REMARKS: (THE FOLLOWING INFORMATION SUPERSEDES EQUIPMENT REQUESTED ABOVE)

K
L
M

FORD TRUCKS

1200

F260.133 CUST STYLESIDE PICKUP

TOTAL BASE VEHICLE
 WITH 4X4 OPTION
 GINGER GLOW GLAMOUR PAINT
 ENGINE 360-V8
 SEAT - KNITTED VINYL
 AMMETER & OIL PRESSURE GAUGE
 FUEL SYST EVAP EMISSION CONTL
 POWER STEERING
 AXLE FR 3550 DANA 6CF-HD
 LH&RH CHROME SWING LK MIRRORS
 POWER BRAKES VACUUM BSTR
 MOLDINGS B/S WITH VINYL INSERT
 RADIO - AM
 REDUCED SOUND LEVEL EXHAUST
 CIGAR LIGHTER
 SUPER COOLING PACKAGE
 REAR STEP BUMPER
 4 8.00X16.5 D 8PR
 8.00X16.5 D 8PR SP TIRE PK

TOTAL OPTIONS

FORD PICKUPS

All Styleside 4 x 2 Pickups are equipped with Better Idea Standard Equipment like:

- Twin-I-Beam independent front suspension. Softens up the ride, toughens up the truck
- Front disc brakes
- Deep-foam seat comfort
- Convenient behind seat storage area with gas tank now frame mounted

- Blend-air (car-type) heater
- Double-wall construction hood, tailgate, doors and pickup box sides for extra strength
- Resistant to rust with inner box sidewalls galvanized, inside of outer walls Zincrometal coated

Pickups can be equipped with Better Idea options like:

- Higher powered V-8 engines
- Super Camper Special F-350 with 140 in. wheelbase or Camper Special F-250

- Special camper tie-down system ties right into pickup frame for strength
- Front and rear stabilizer bars (F-250, 350; standard on Camper Special and Super Camper Special)
- Air conditioner
- AM/FM stereo radio
- Deluxe pickup box cover
- Wheel covers—even on 16½-in. wheels
- Trailer towing packages—up to 10,000 lbs



SOLD TO

FORD MOTOR COMPANY
 LOS ANGELES DIST SLS-BOX 127
 PICO RIVERA CA 90662

SHIP TO (IF OTHER THAN ABOVE)

L A ASSY PLANT

SHIP THROUGH

PICO RIVERA CA

VEHICLE IDENTIFICATION NO.

FINAL ASSEMBLY POINT

METHOD OF TRANSP.

DEALER NO.

FINANCE - AAD 419 TRK (12-73) (PRINTED IN U.S.A.)