

1967 CHEVROLET

**OWNER
PROTECTION PLAN
AND NEW VEHICLE WARRANTY**

**Chevrolet
Chevelle
Camara**



MARK OF EXCELLENCE

**Chevy II
Corvair
Corvette**

ATTENTION

**PLEASE REFER TO
IMPORTANT NOTE
INSIDE
FRONT COVER**

REMARQUE

**CONSULTEZ
L'AVIS IMPORTANT
AU VERSO DE CETTE
COUVERTURE**

PROTECT-O-PLATE

JAMES J SIGOUIN

BOX 134

BRALORNE BC

FC0011204

04 25 67 81115

XG
/M

124377M117664

GENERAL MOTORS PRODUCTS
OF CANADA, LIMITED

PROTECT-O-PLATE

It is extremely important when you receive your Protect-O-Plate through the mail that it be affixed in the area designated on on this cover. Please keep this booklet in the glove compartment at all times.

"PROTECT-O-PLATE"

Dès que vous recevrez votre plaque "Protect-O-Plate" par la poste, il est très important que vous l'apposiez à l'endroit indiqué sur cette couverture. Veuillez toujours garder ce livret de garantie et d'entretien dans le coffre à gants.

"All adjustments, rattles and water leaks covered only for 4000 miles or 90 days — whichever occurs first. Please refer to Page 9, 11 & 15 inside this book for owner's maintenance responsibilities."

8
SMITH
BOX 10
KALLOOPI
Selon les clauses de la garantie de véhicule neuve, le concessionnaire fera part d'une telle validation au bureau de zone de la General Motors.

COUPON DE VALIDATION DE 12 MOIS

DEALER NOTE:

DETACH THIS
VALIDATION REPORT
AND MAIL TO
YOUR
LOCAL ZONE OFFICE

AU CONCESSIONNAIRE

DÉTACHEZ
CE COUPON
ET EXPÉDIEZ-LE A
VOTRE BUREAU
DE ZONE

**LA VALIDATION
DE 18 MOIS**
échoit à la date
indiquée plus bas

JAN.	FEB.	MAR.	APR.	MAY	JUNE
JAN.	FÉV.	MARS	AVRIL	MAI	JUIN
JULY	AUG.	SEPT.	OCT.	NOV.	DEC.
JUIL.	AÔUT	SEPT.	OCT.	NOV.	DÉC.

**18 MONTH
VALIDATION**
due on date
indicated above



Canada

DATE: August 3, 2005
CUSTOMER: Mr. M. Tobin
VEHICLE: 1967 Chevrolet Camaro RS / SS 350
VIN: 124377N117664
TRIM: 797 - Parchment & Black
PAINT: K - Emerald Turquoise
TOP: 2 - Black
PRODUCTION PLANT: Norwood, OH
PRODUCTION DATE: October 18, 1966
SHIPPING DATE: October 26, 1966
MODEL NUMBER: 12437 - V8 2dr sport coupe
ENGINE: 350 CID 295 HP 4bbl Turbo Fire V8
DEALER: Perth Motors Ltd.
Stratford, ON
**NUMBER IMPORTED FOR SALE IN
CANADA: (SAME MODEL NO. ONLY) 5, 730**

OPTION

DESCRIPTION

A39	SEAT BELTS - DELUXE - FRONT & REAR
D55	FRONT COMPARTMENT FLOOR CONSOLE
G80	REAR AXLE - POSITRACTION
L48	ENGINE: SUPER SPORT - 350 CID 295 HP 4bbl TURBO FIRE V8
M20	TRANSMISSION: 4-SPEED MANUAL - WIDE RATIO
N34	STEERING WHEEL: WOOD GRAINED PLASTIC
N61	DUAL EXHAUST - DEEP TONE MUFFLER
P01	WHEEL TRIM COVER
U17	GAUGES: OIL, COOLANT, AMMETER, CLOCK, GAS, TACHOMETER
U63	RADIO: AM PUSHBUTTON
Z22	PACKAGE: RALLY SPORT (RS)
Z23	INTERIOR DECOR PACKAGE
Z87	DELUXE INTERIOR





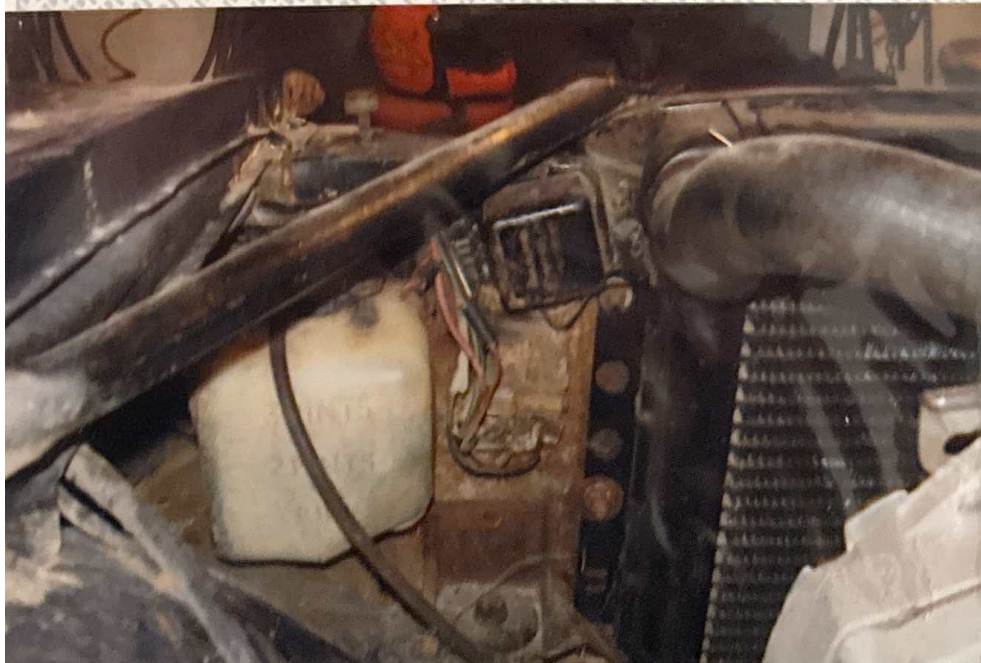
mo

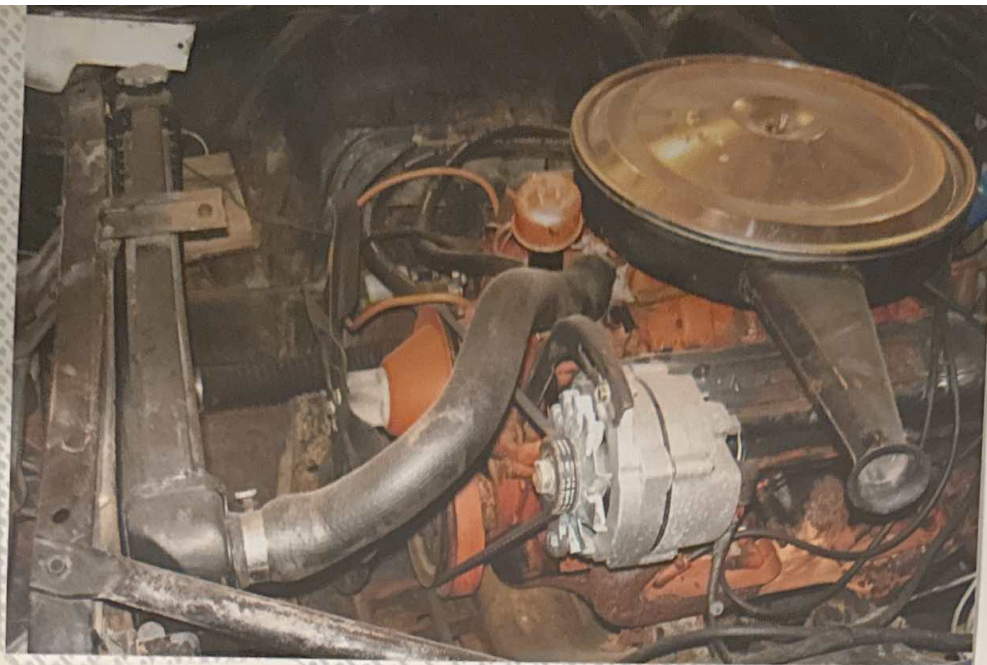


Memo



Memo





Memo



Memo



Memo



Memo



Memo



Memo



PIONEER PATENT NO. 4,853,440 & 5,022,715

SLIP-IN POCKET

Memo



Memo



Memo



SLIP IN POCKET



Memo



Memo



Memo





Memo



Memo

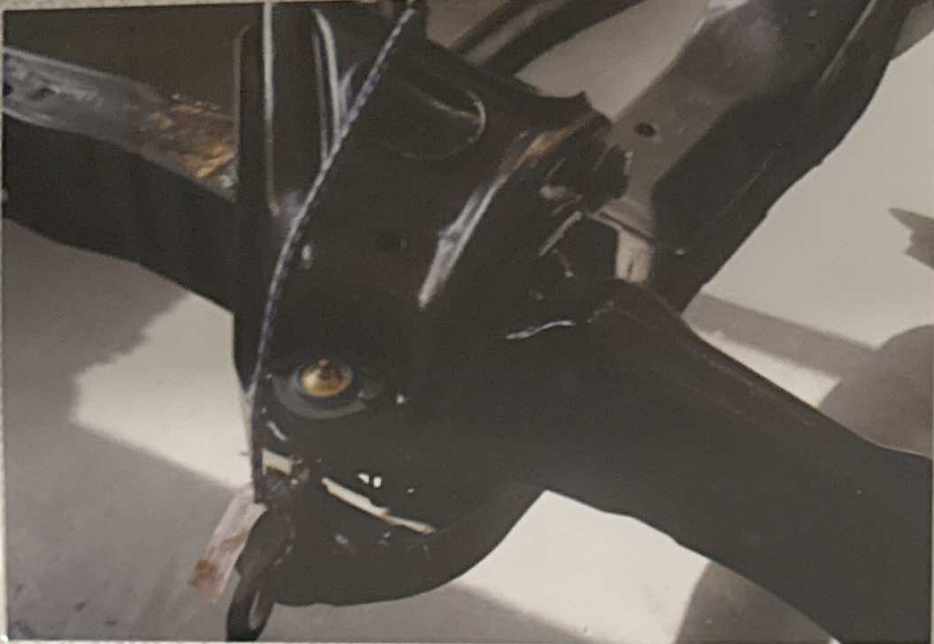


Memo

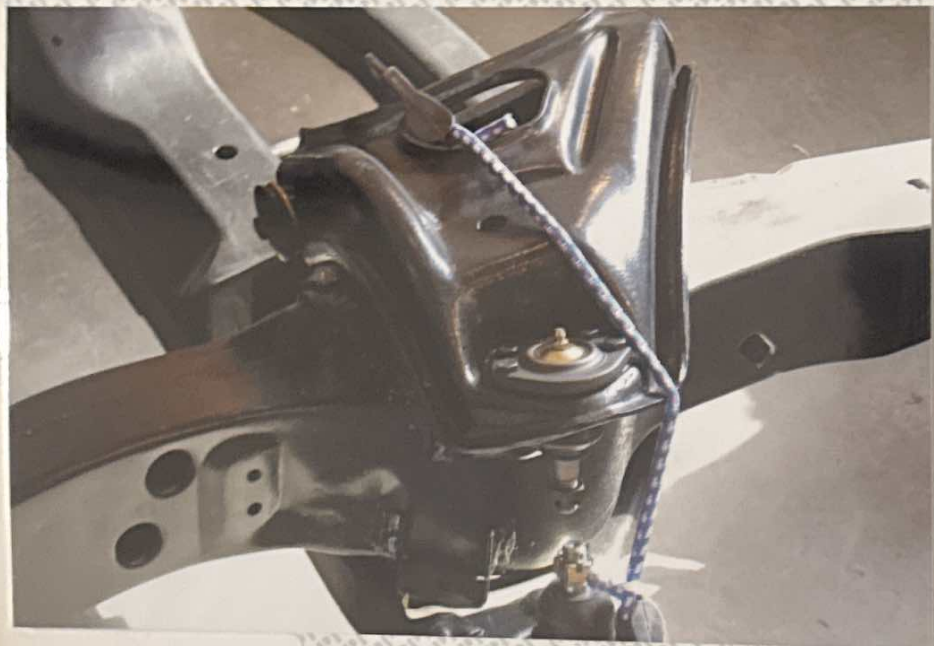


SLIP IN POCKET

PIONEER PATENT NO. 4,999,999 & 4,999,999



Memo



Memo



Memo

SLIP-IN POCKET



Memo



Memo



Memo



PIONEER PATENT NO. 2,825,118 & 2,825,119

← SLIP-IN POCKET





Memo



Memo



Memo

PIONEER PATENT NO. 2,800,000 & 2,800,001

© SLIP IN ROCKET



Memo



Memo



Memo







Memo



Memo



Memo

PIONEER PATENT, INC. CHINA & HONGKONG

SLIP-IN POCKET





Memor



Memor



Memor

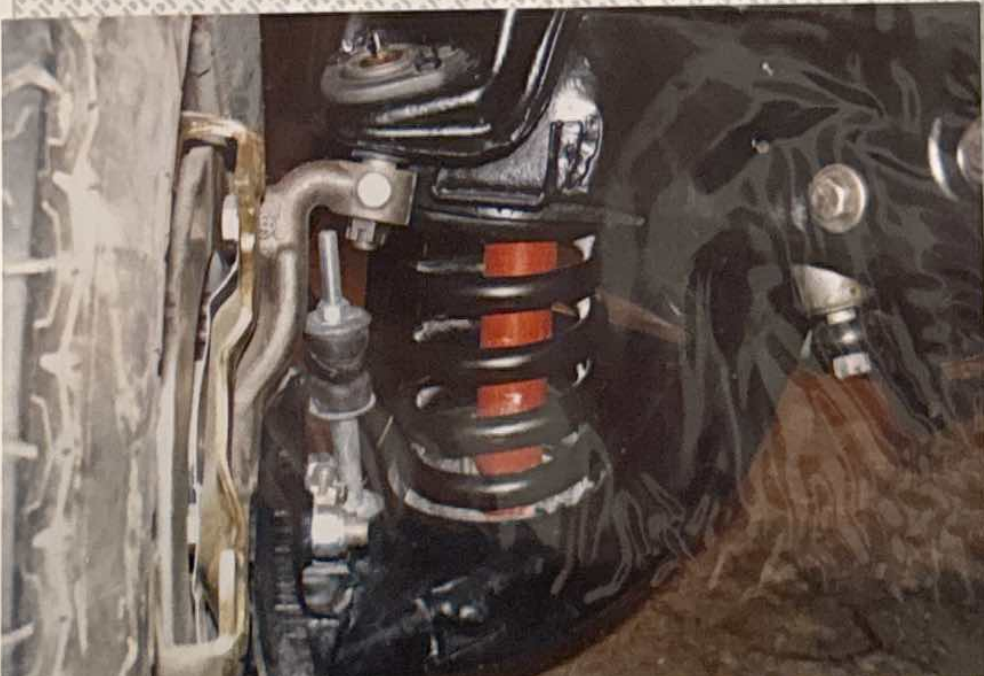
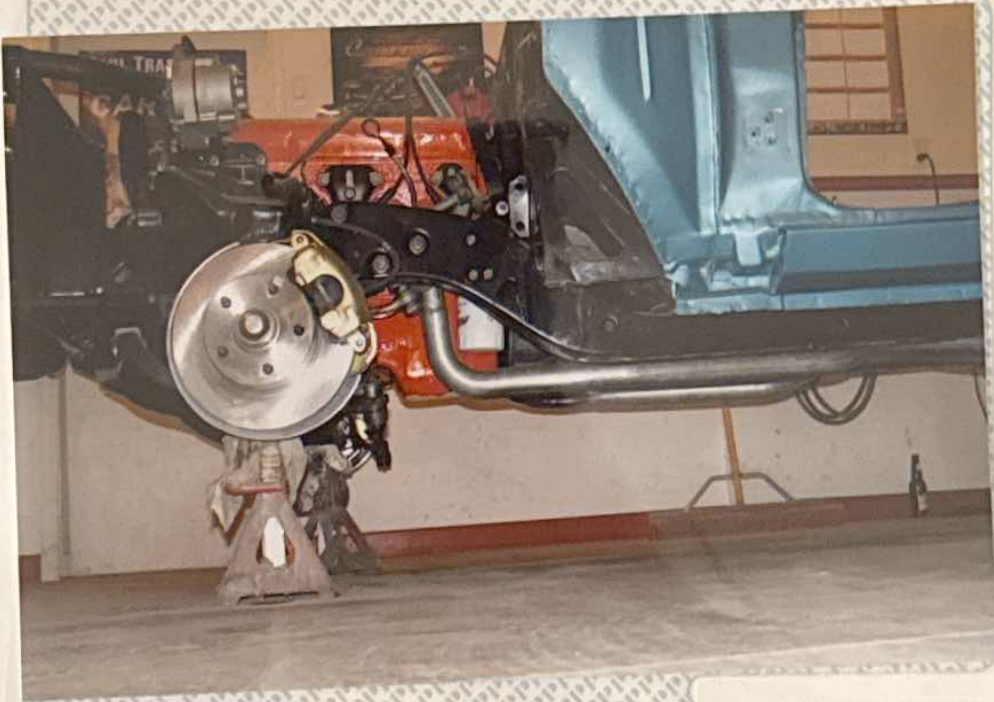
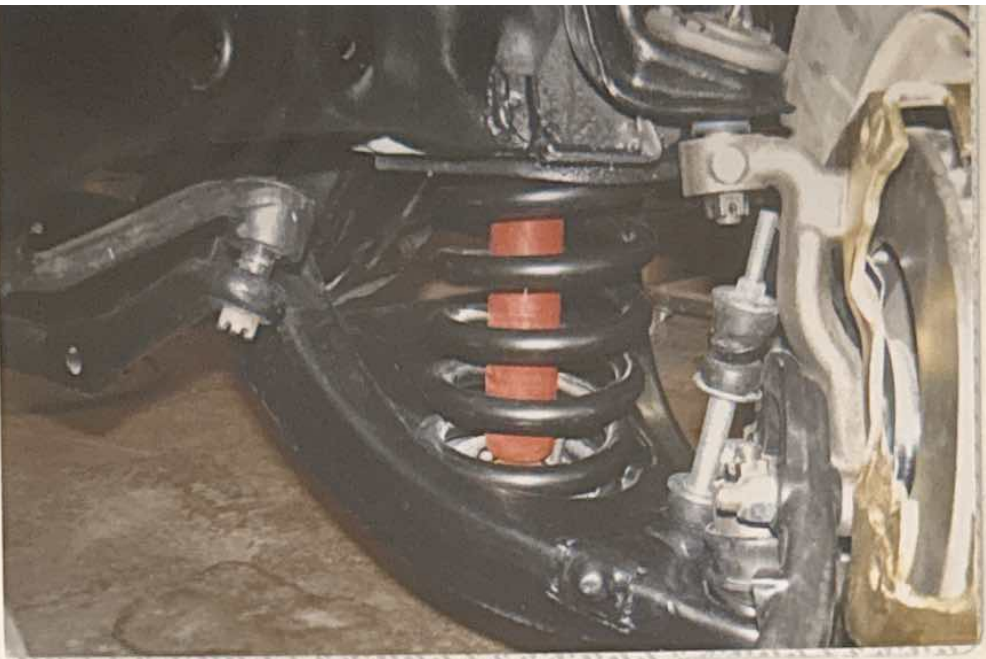


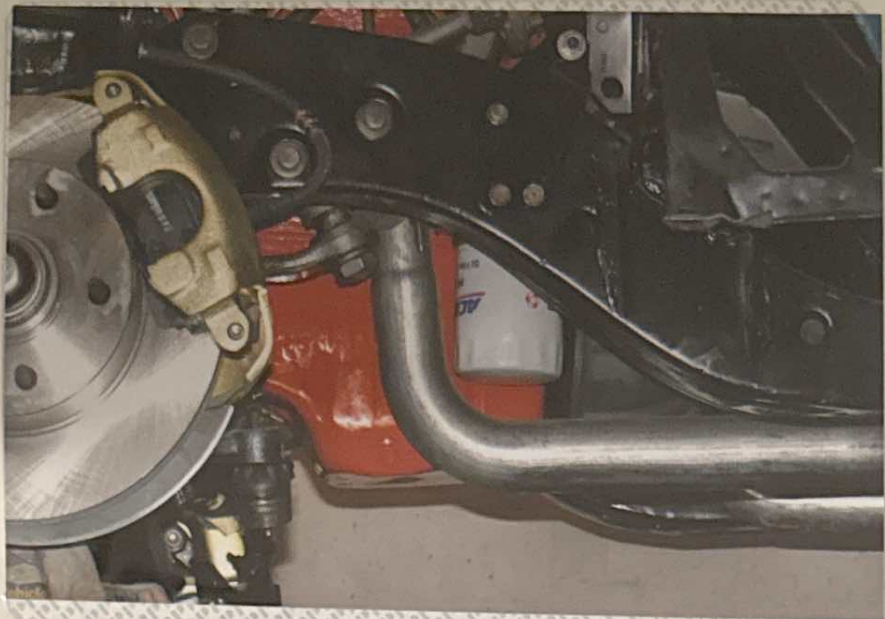
SLIP-IN POCKET®

PIONEER PATENT BY QUINN & ASSOCIATES

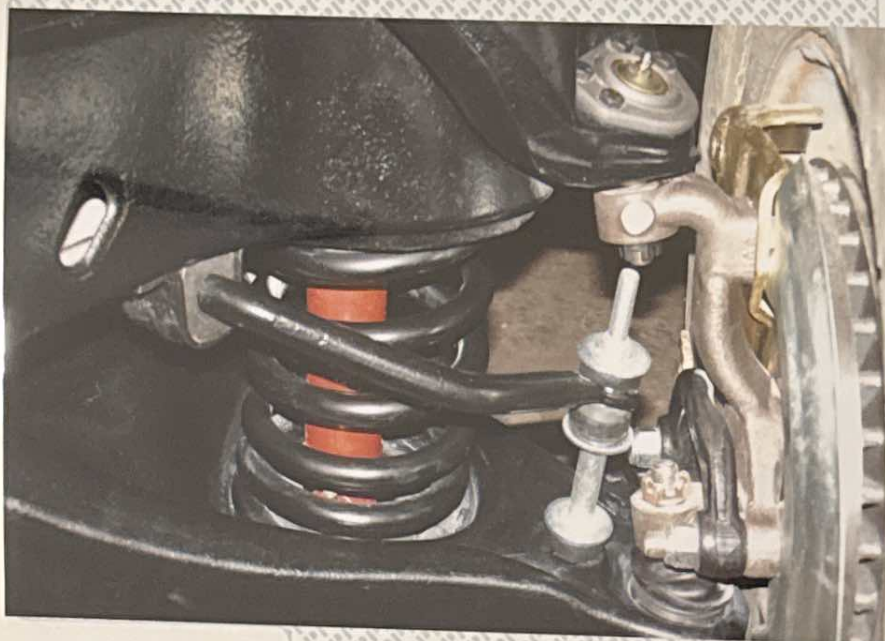








Me



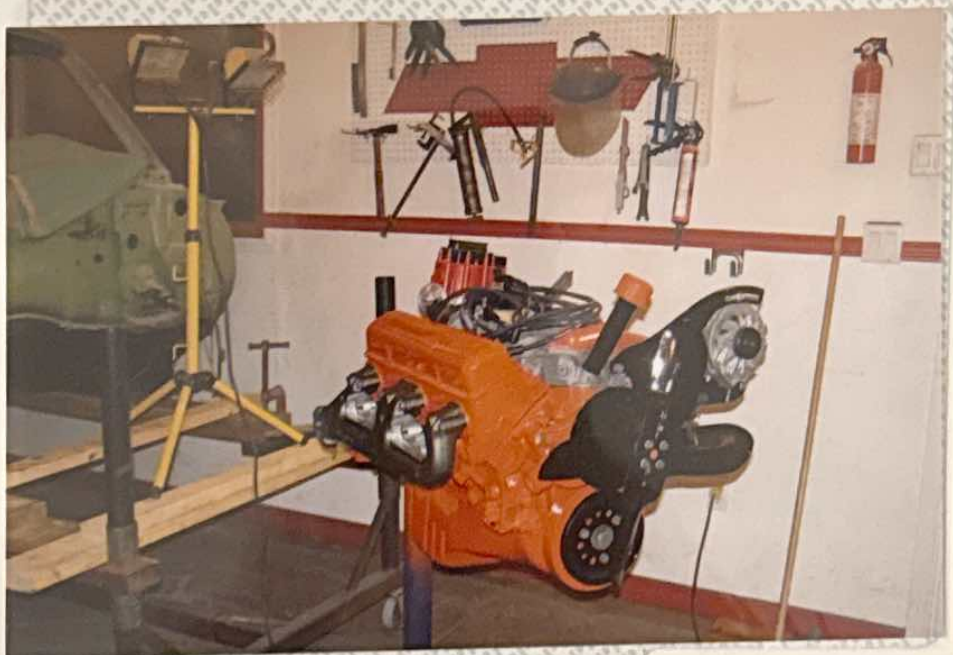
Me



M

PHOTOLIF PATENT '90 KRUGER & BISSMAYER

SLIP IN POCKET



Memo

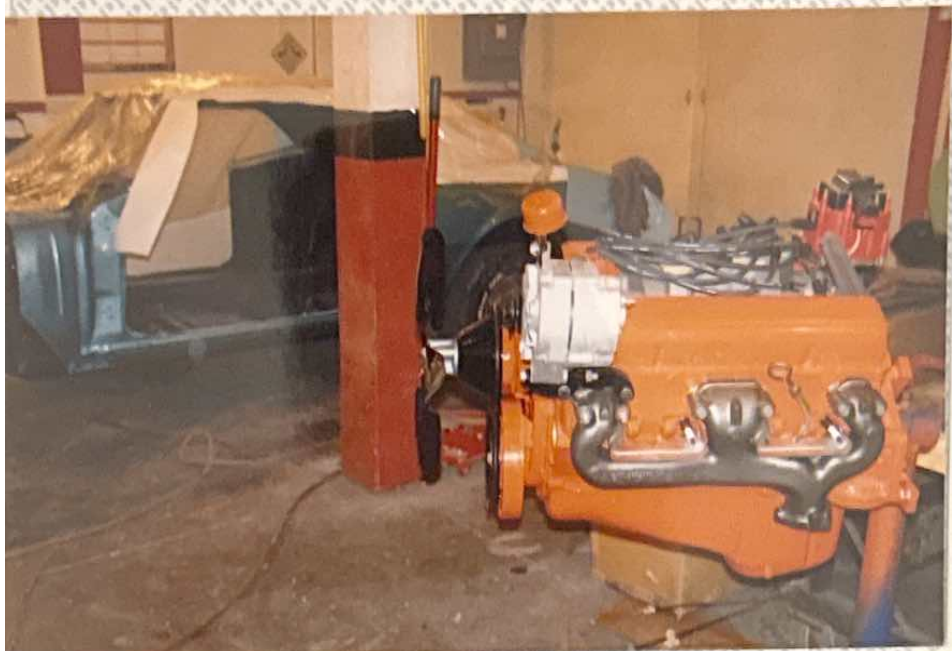


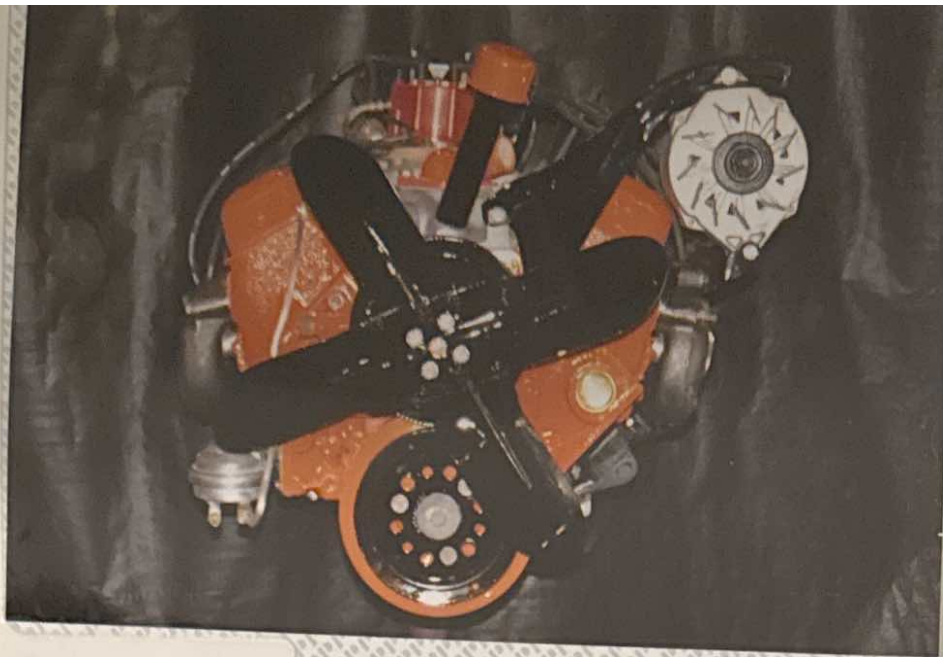
Memo



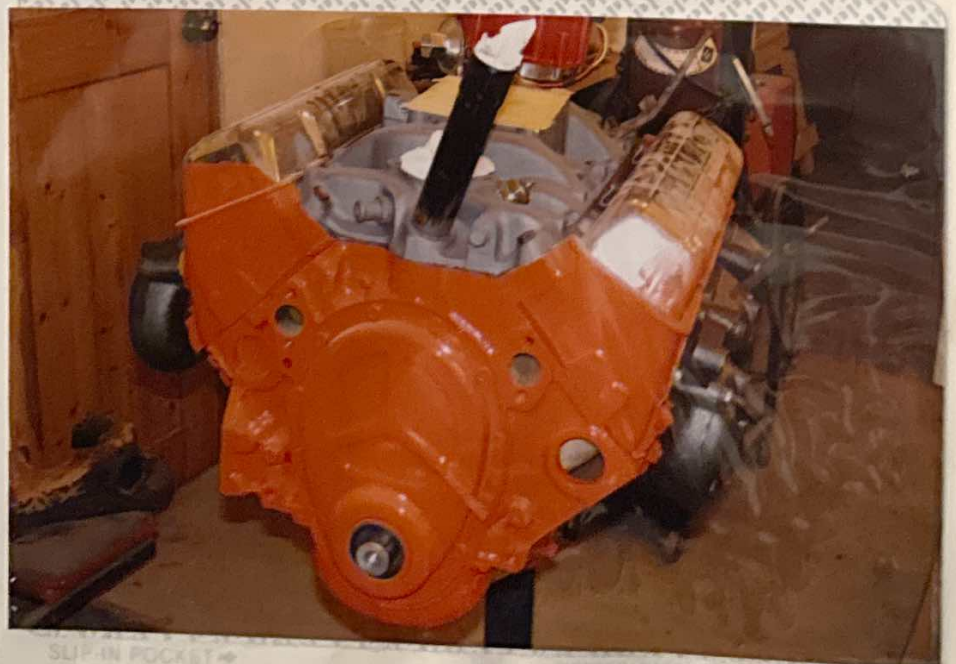
Memo

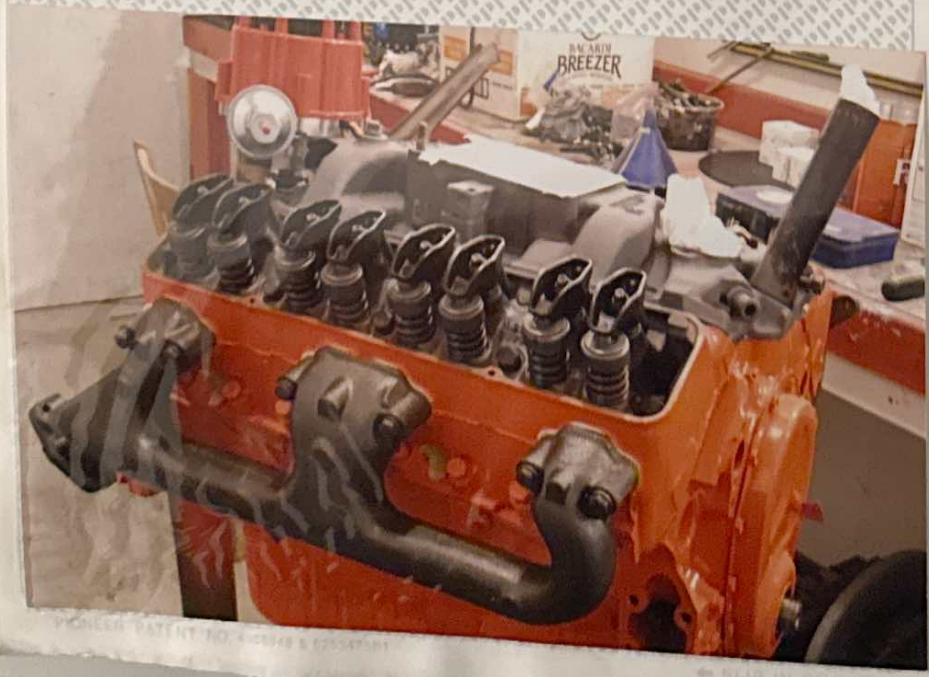
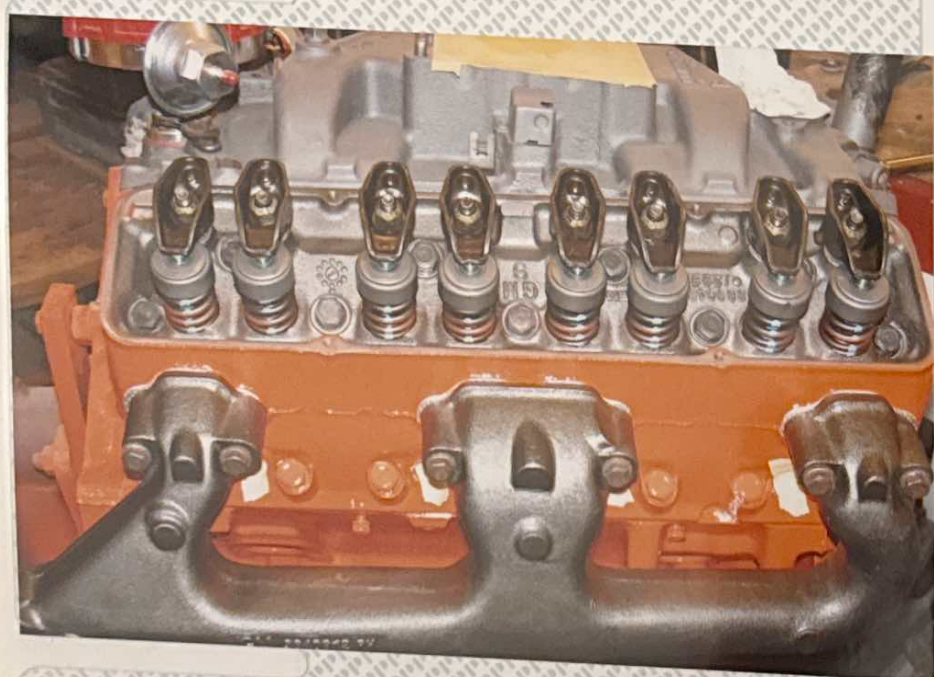






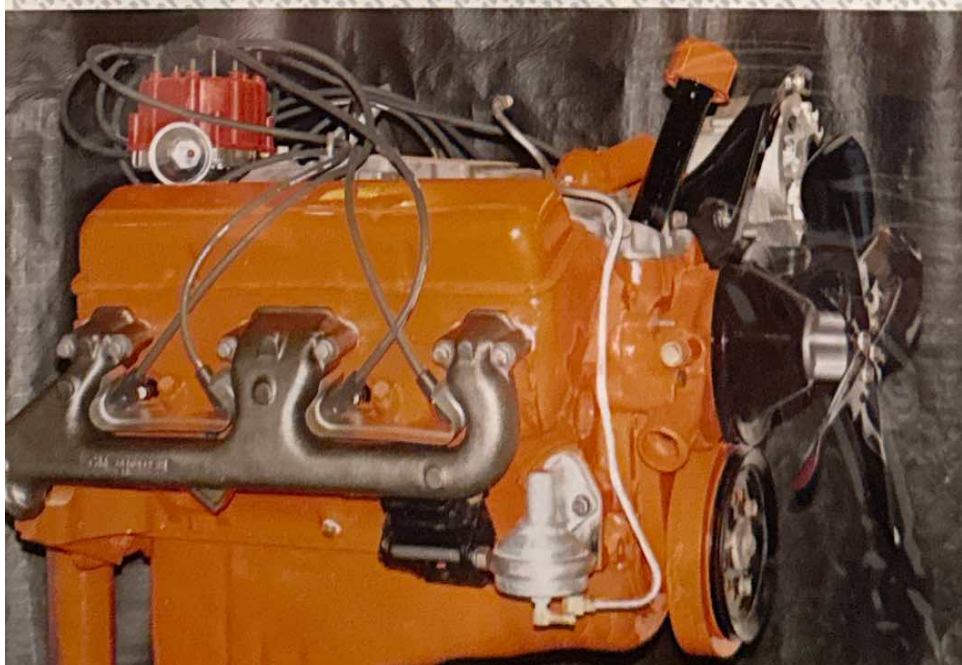
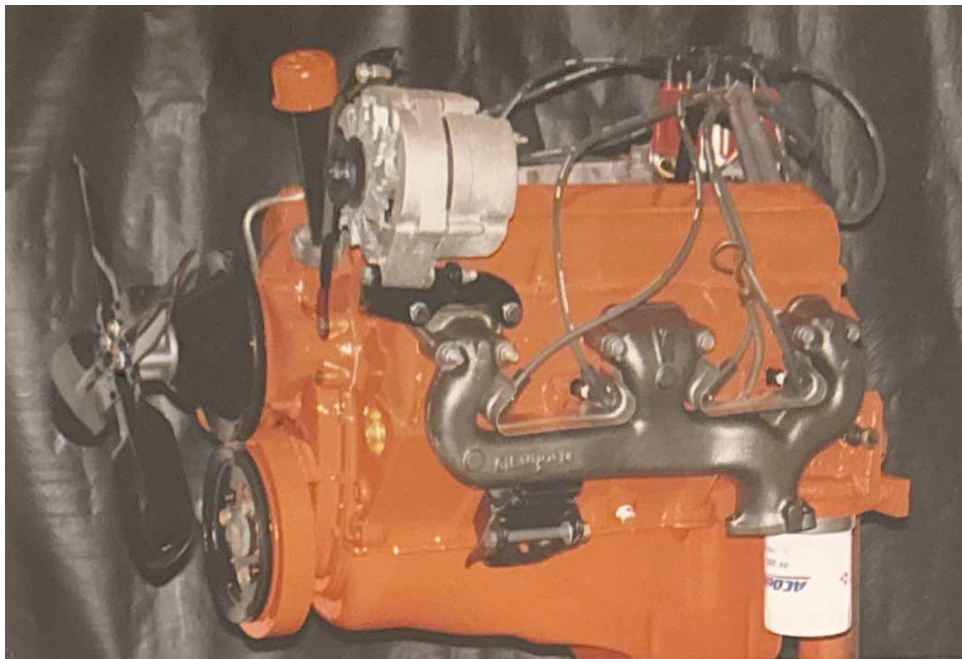
PIONEER BATTERY NO. 45-1048 & 201-47981

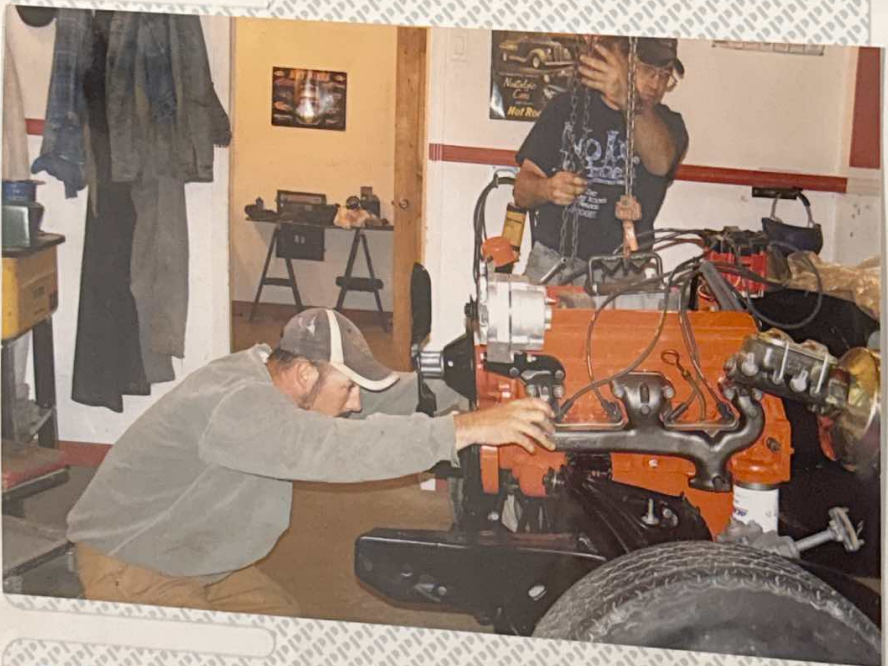


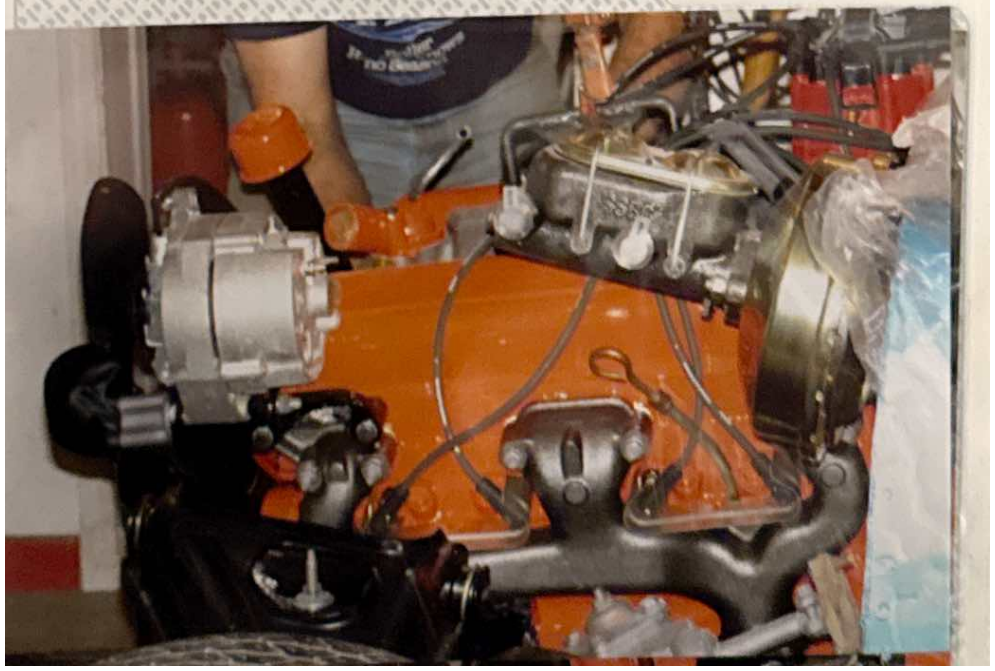


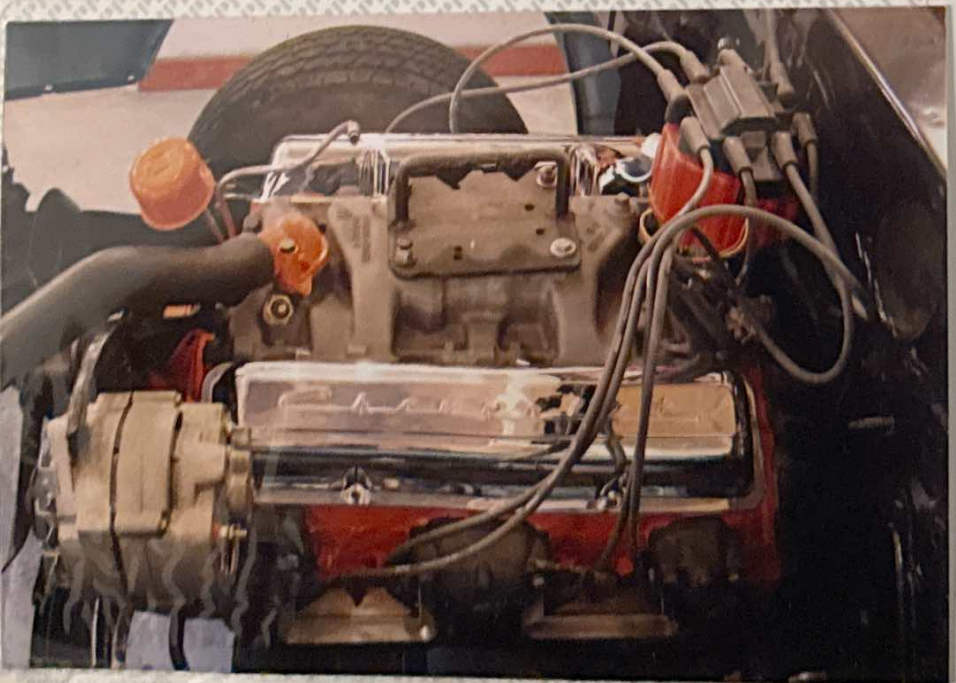
POWER BATTERY INC. 4-2948 & 225-2470

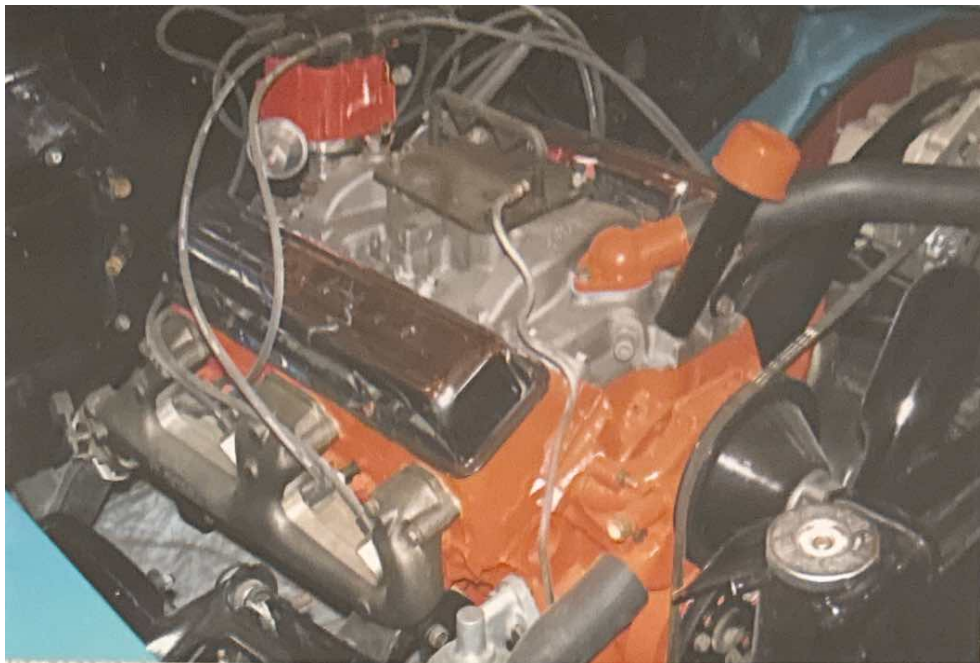
SLIP-IN POCKET













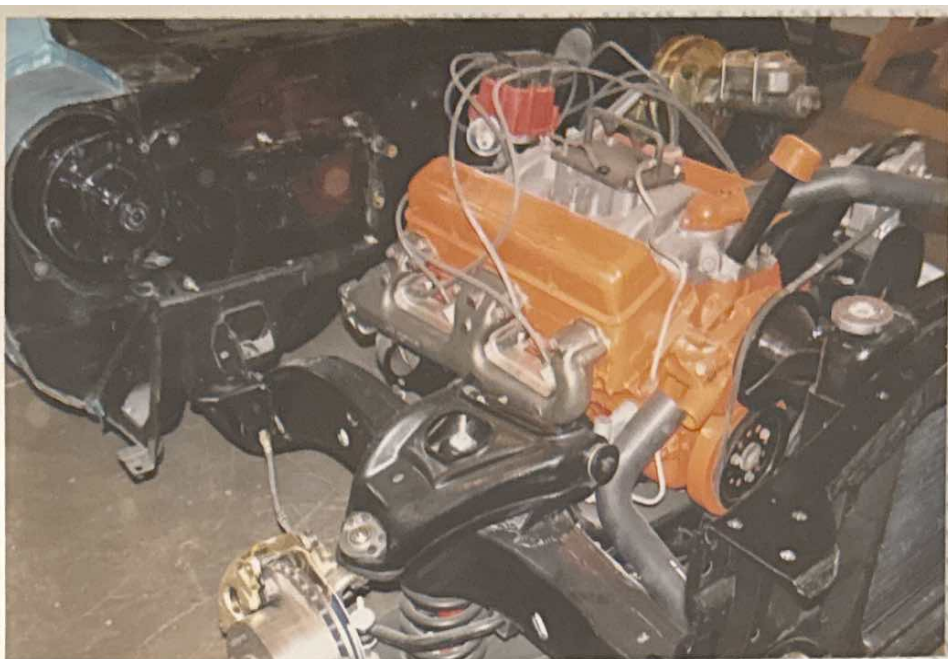
Me

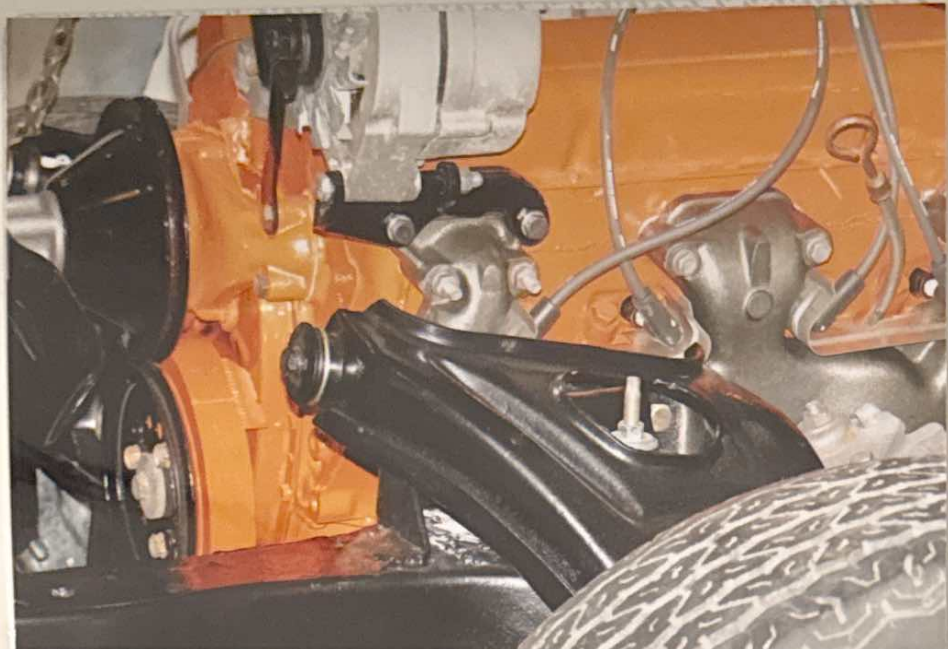


Me

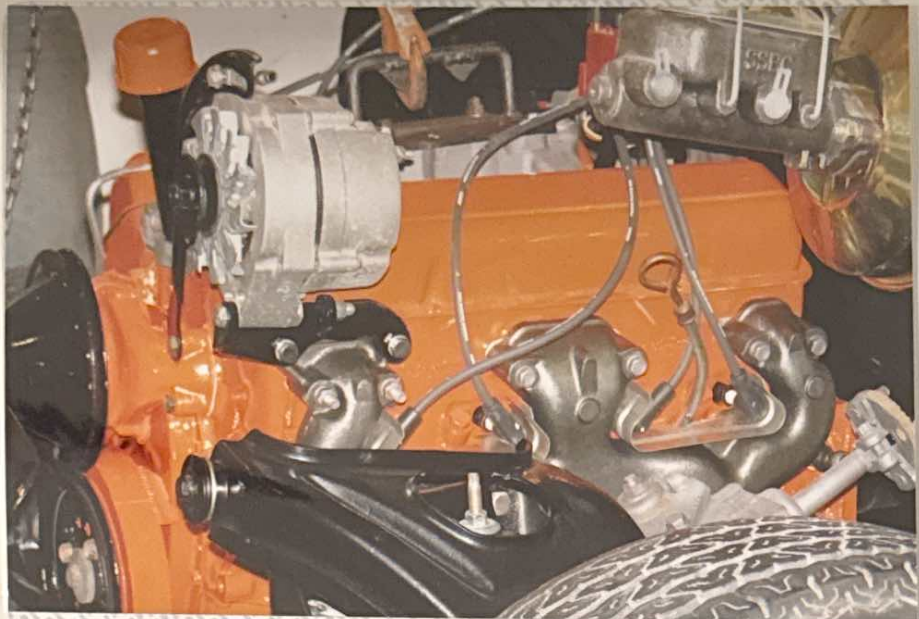


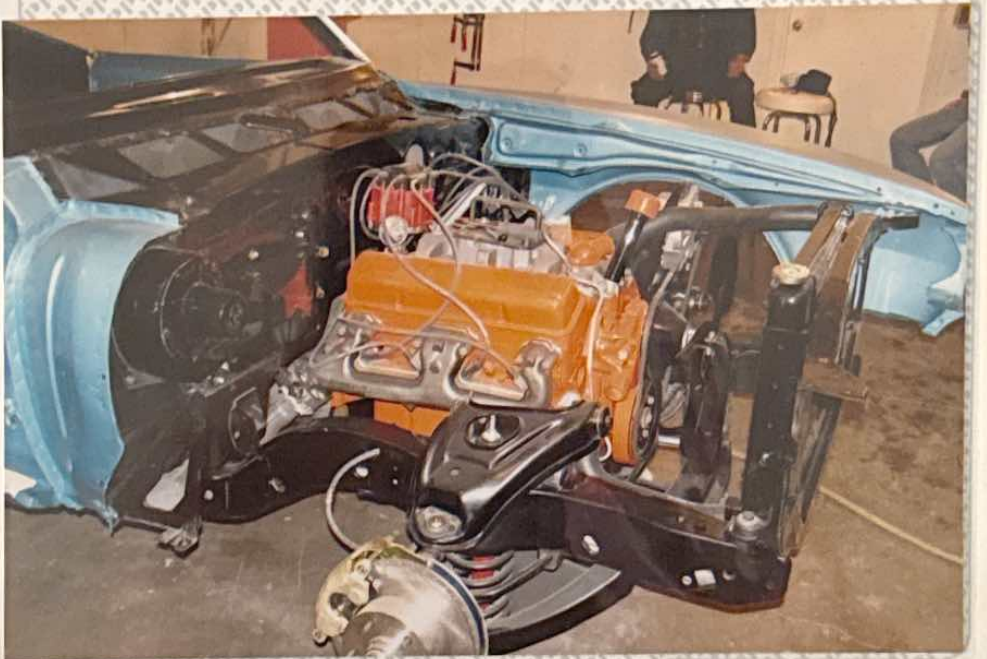
M

















Men



Men



Me











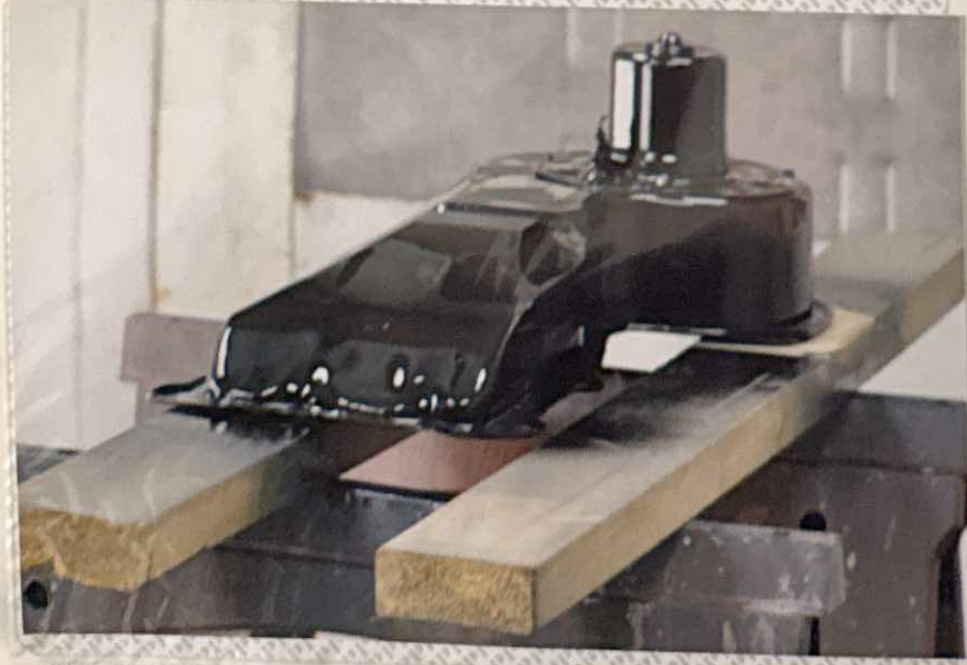
Memo



Memo



Mem





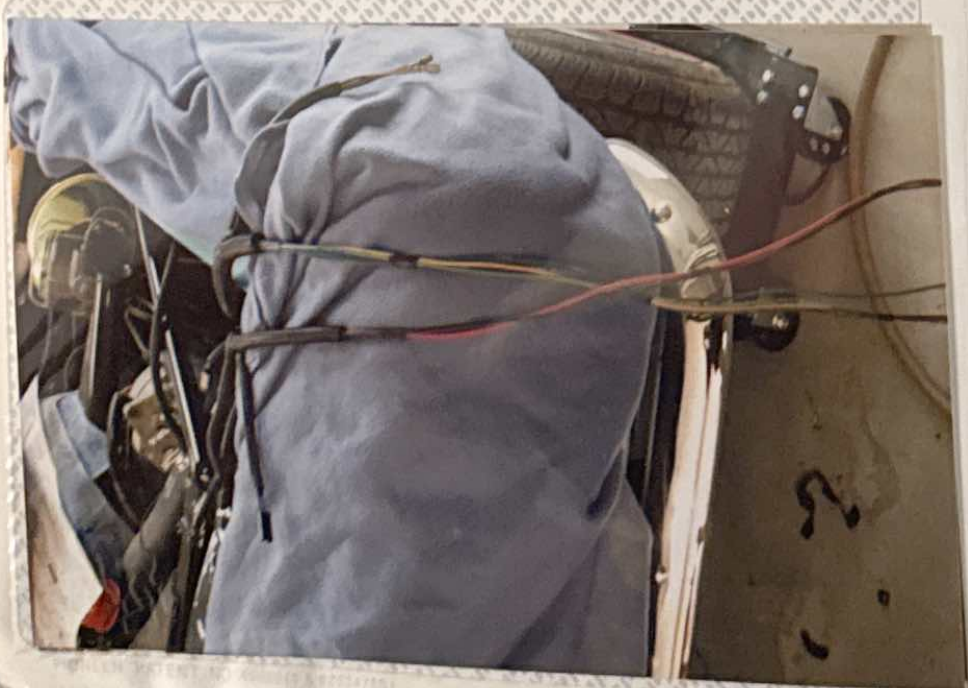
Mem



Me

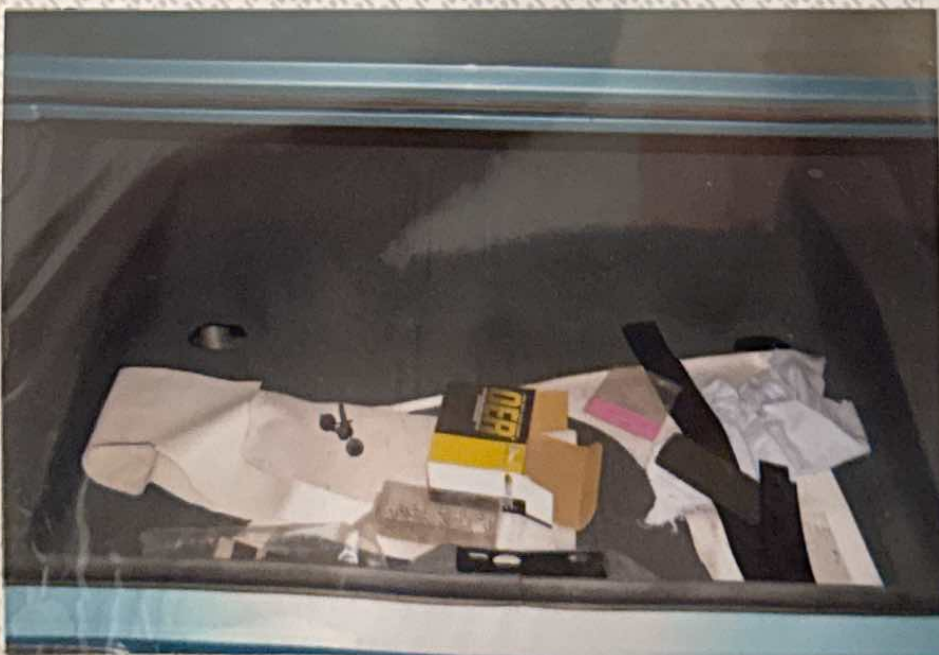


M





SLIP IN POCKET →

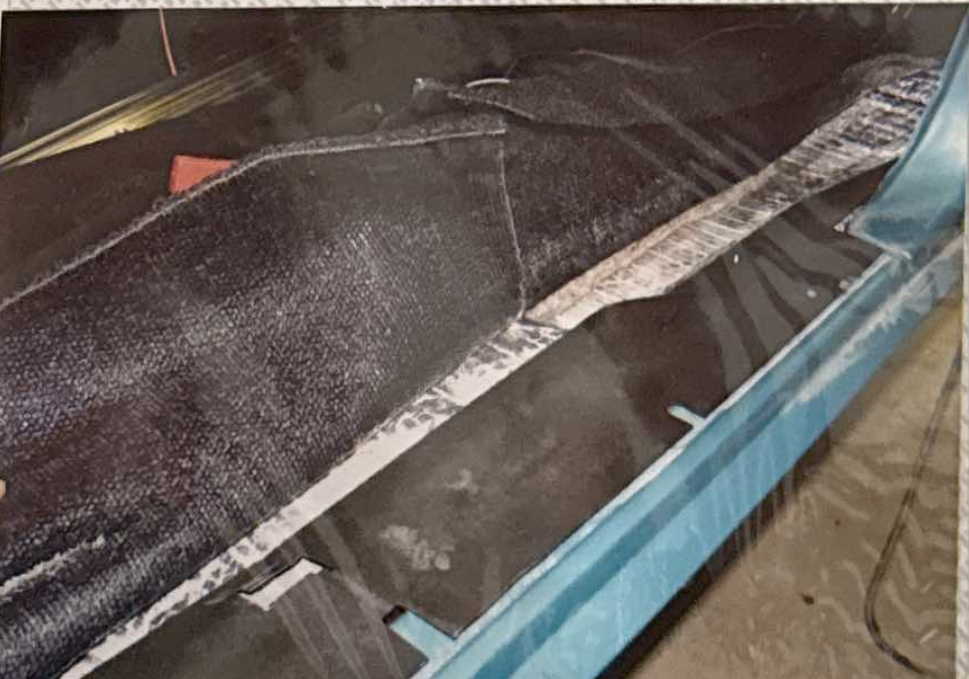
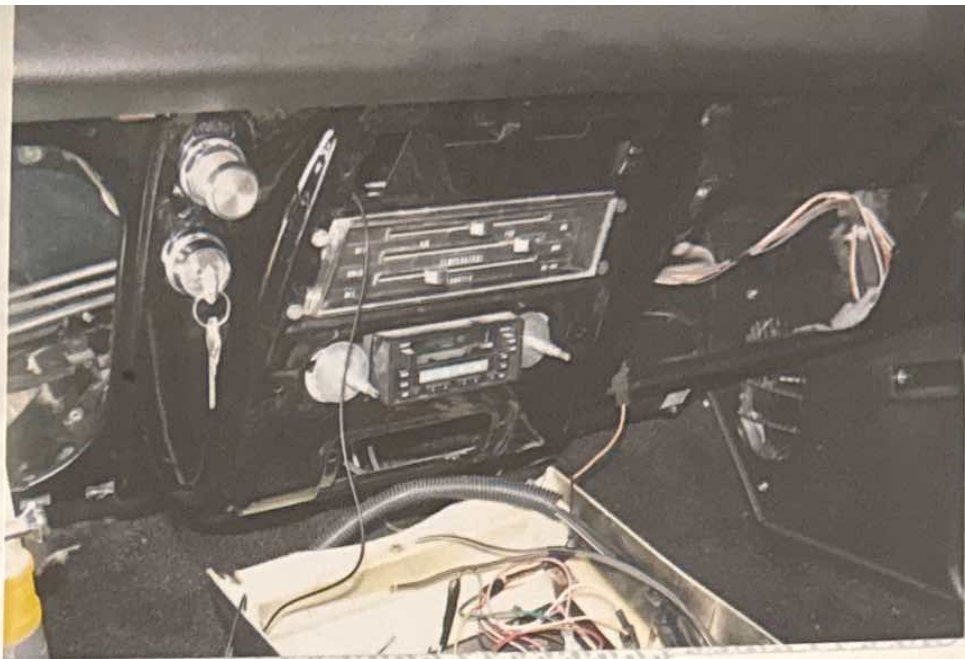


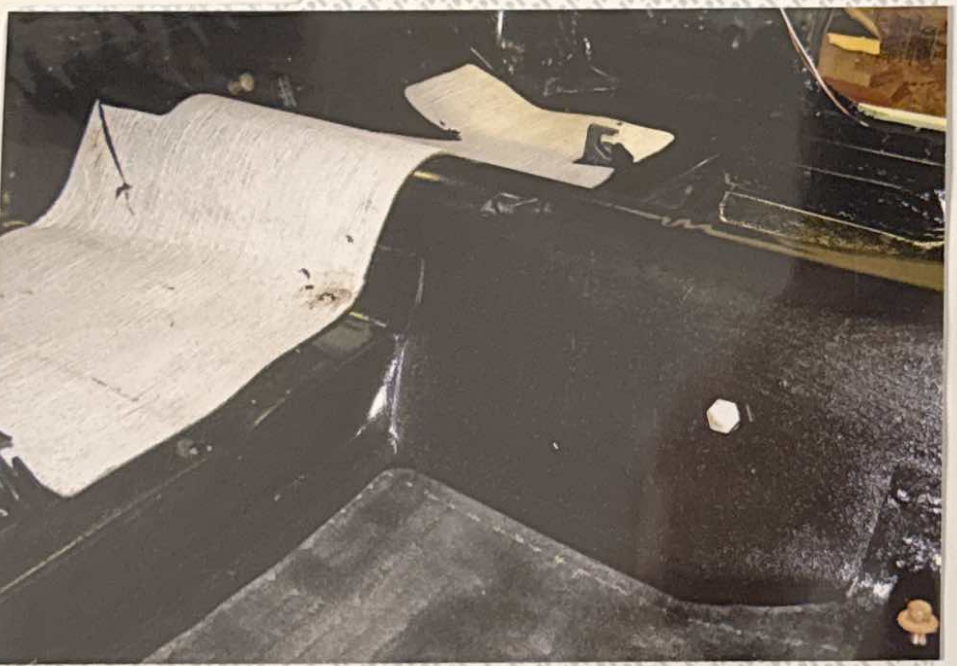
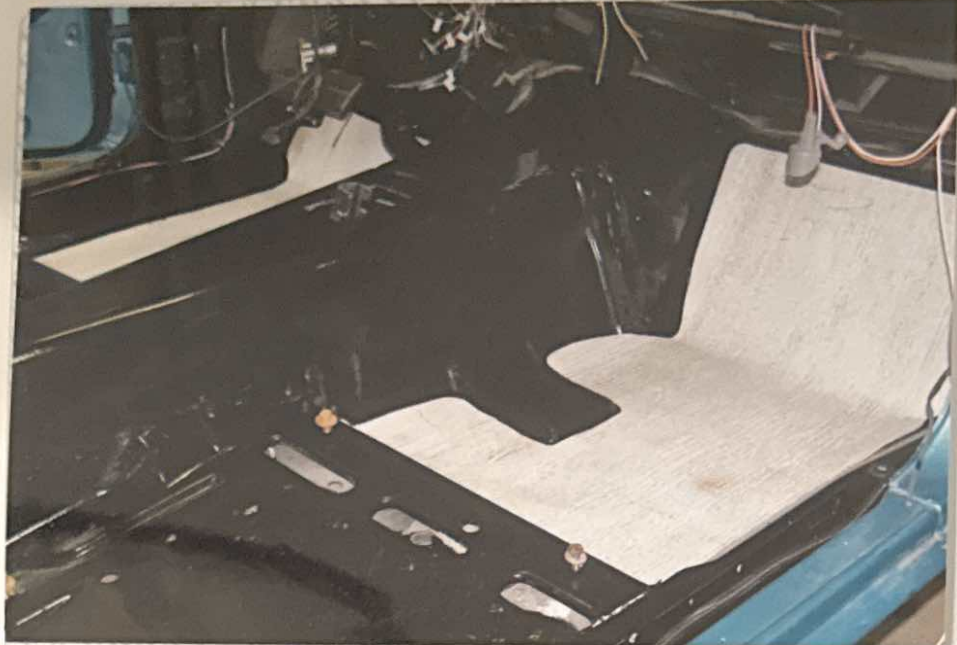


SLIP-IN POCKET**

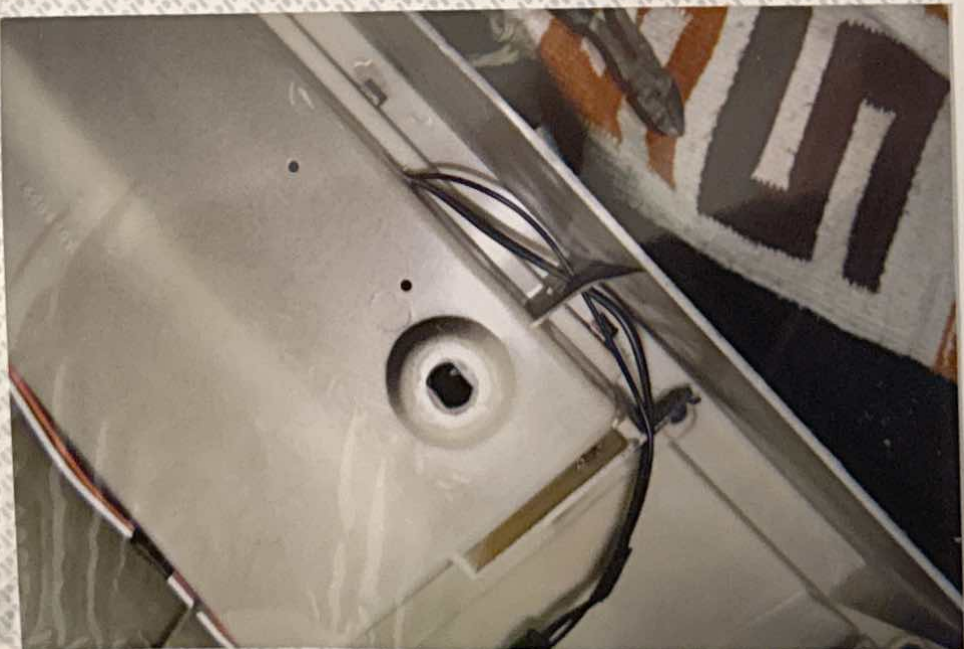
FINISH PAINT WEATHERS TUCKER

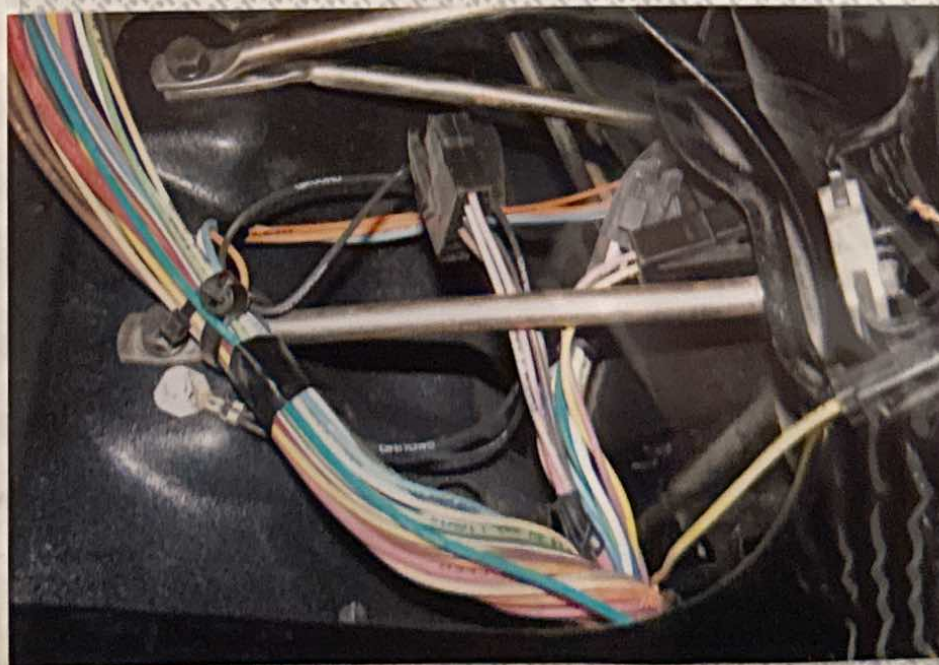


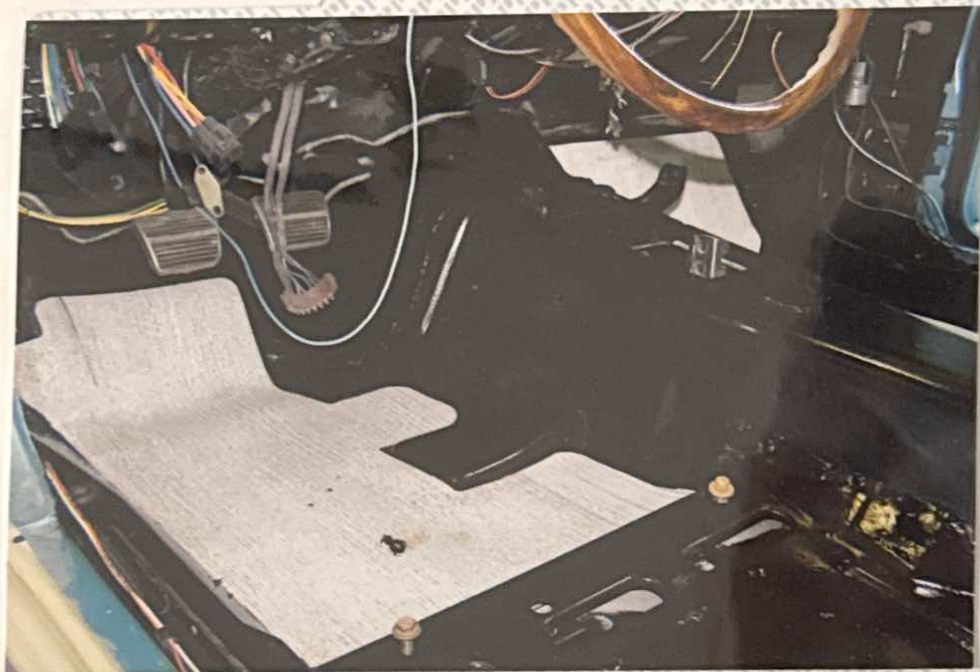


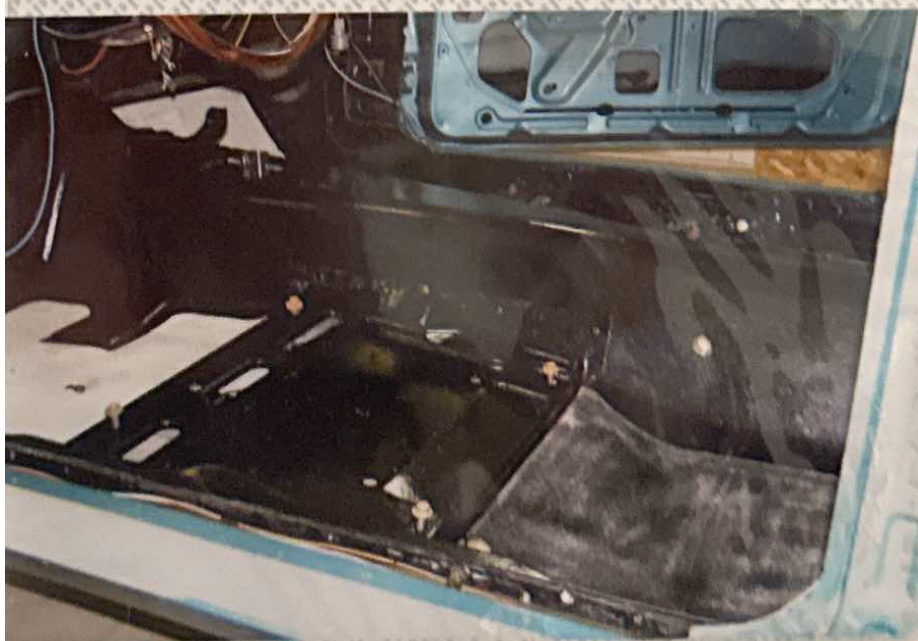








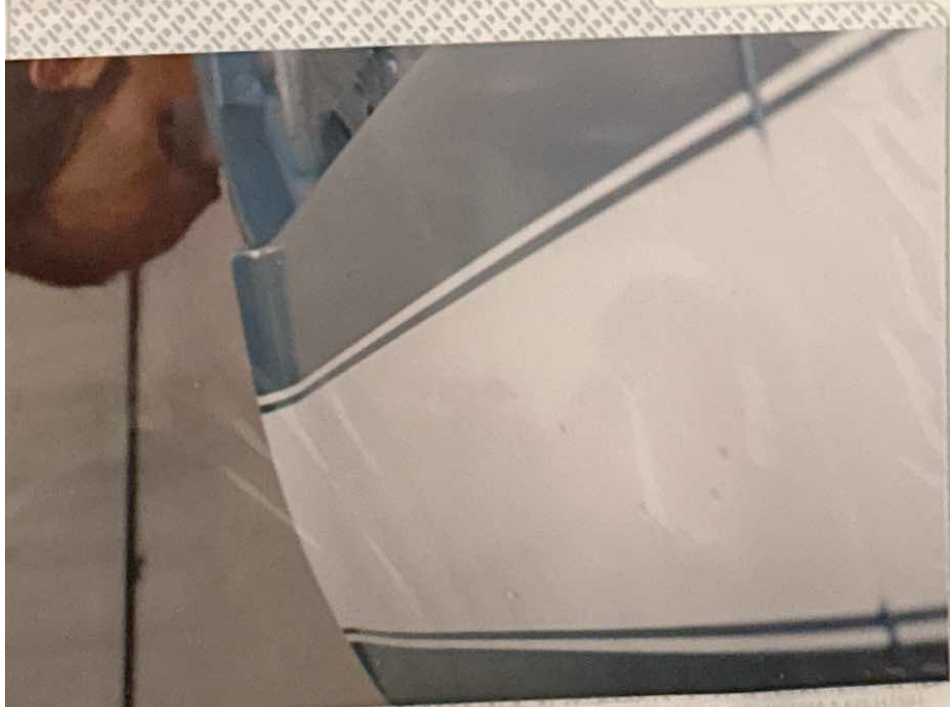
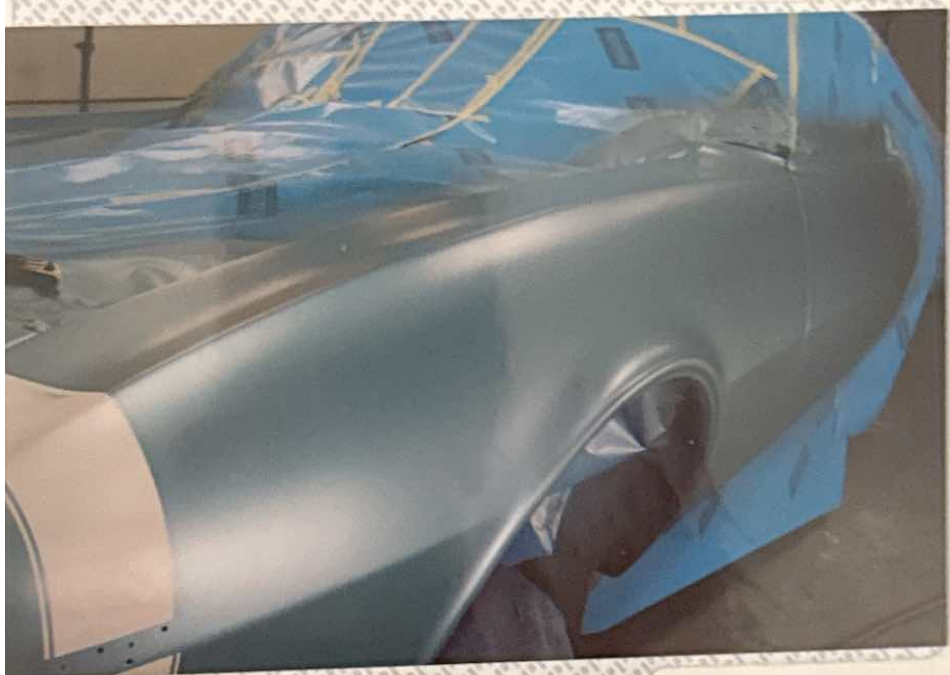


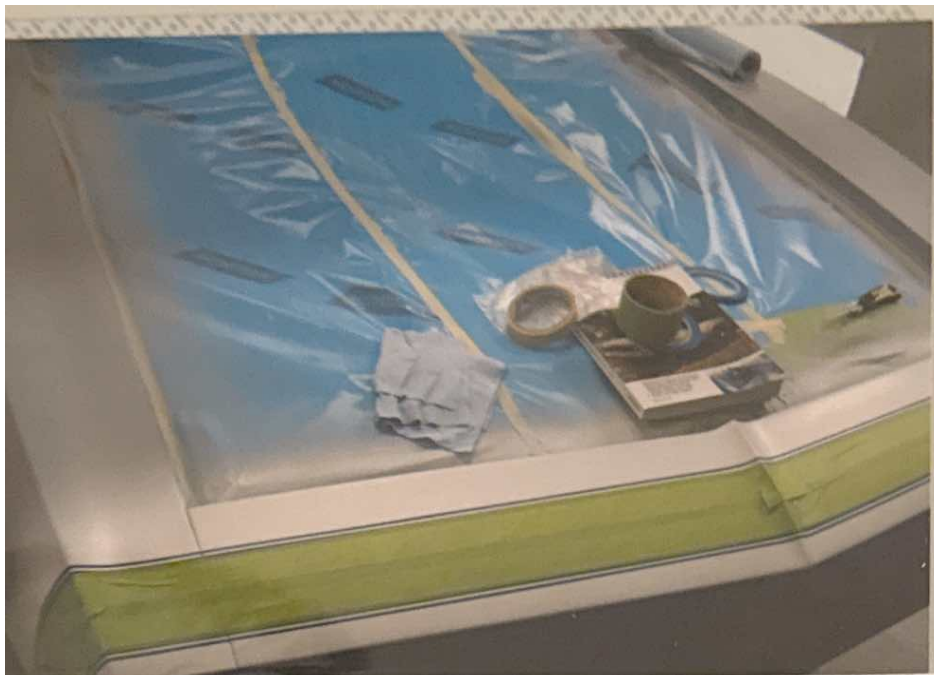
















camaro









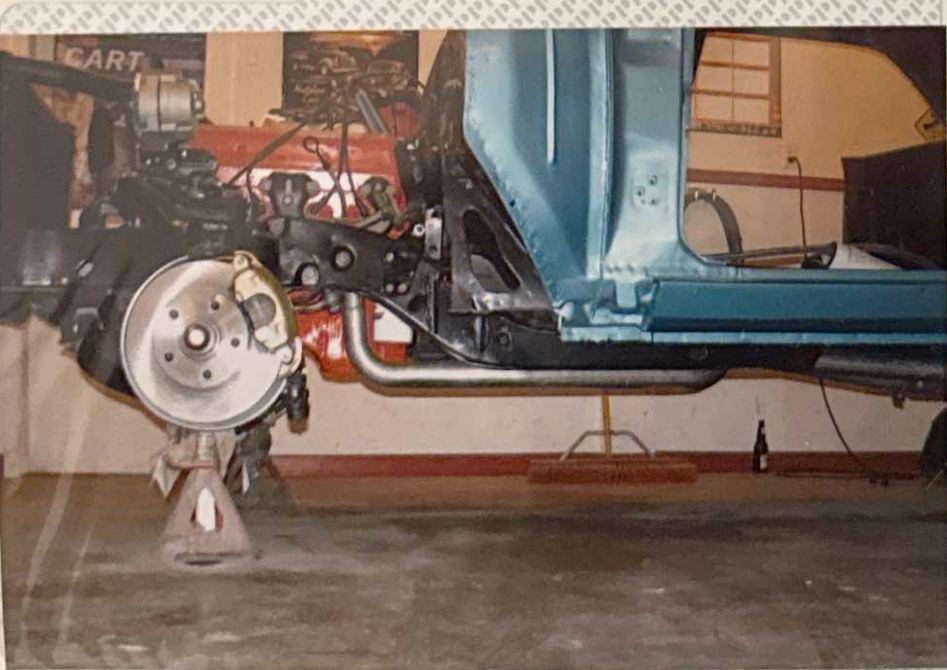


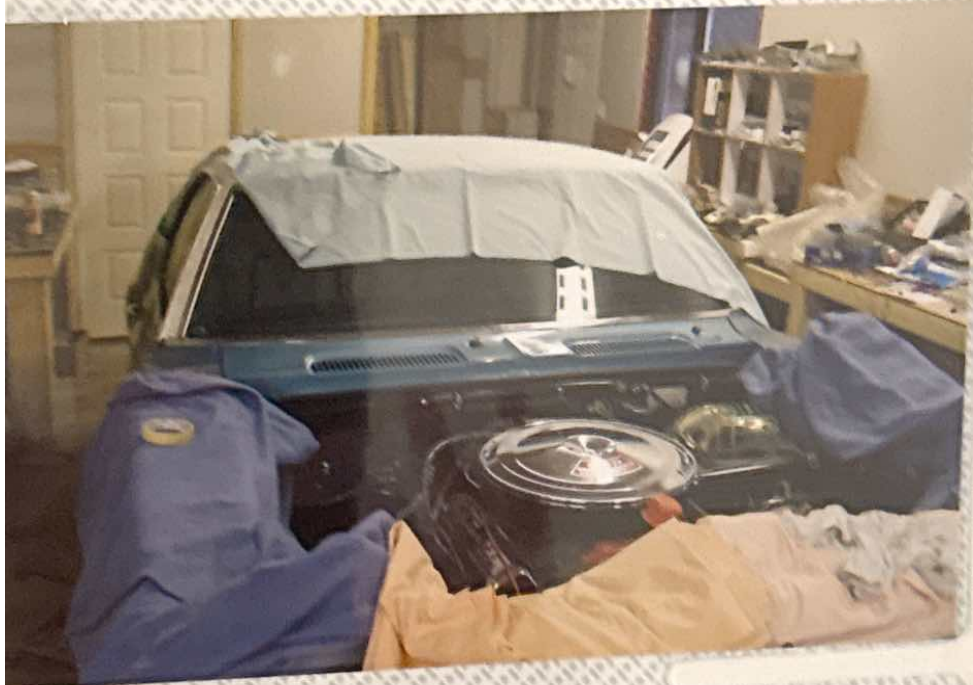




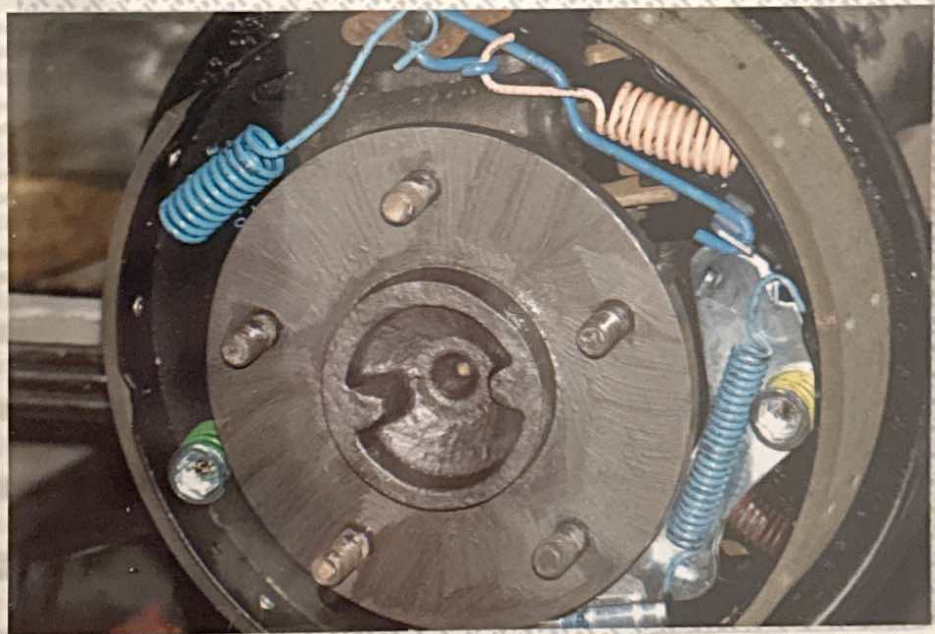


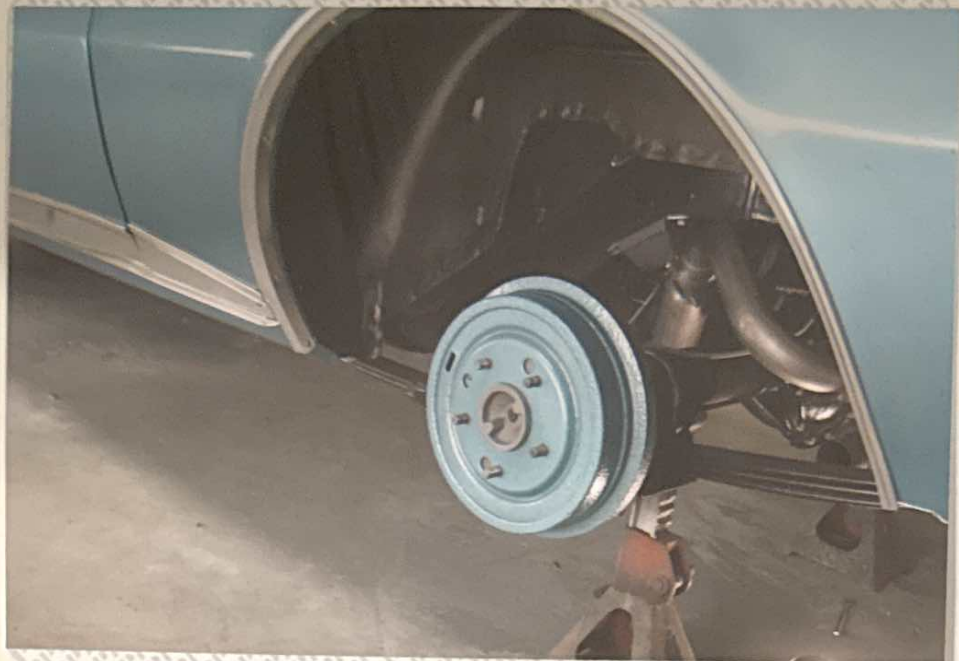


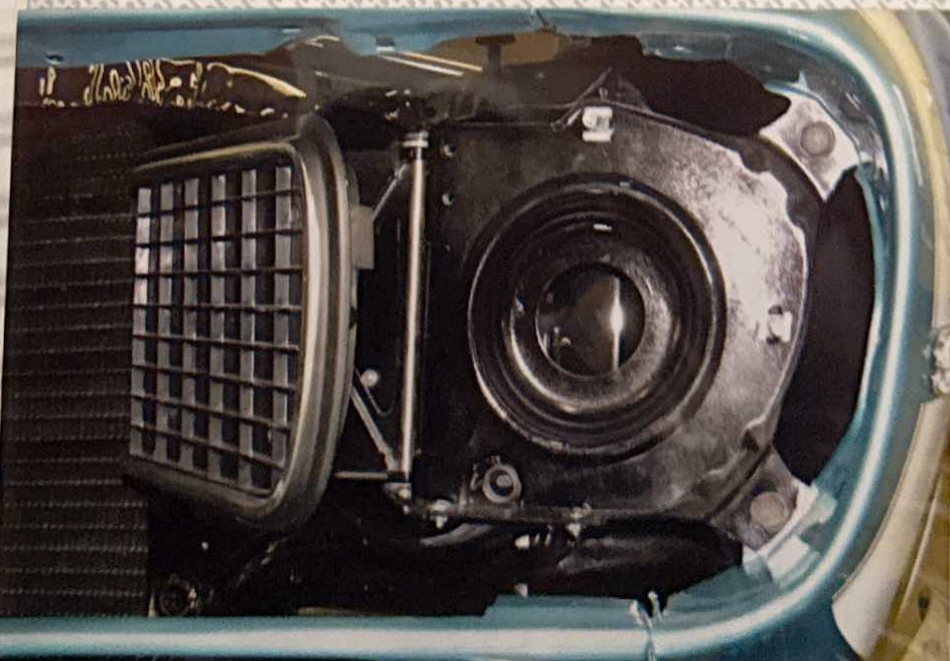








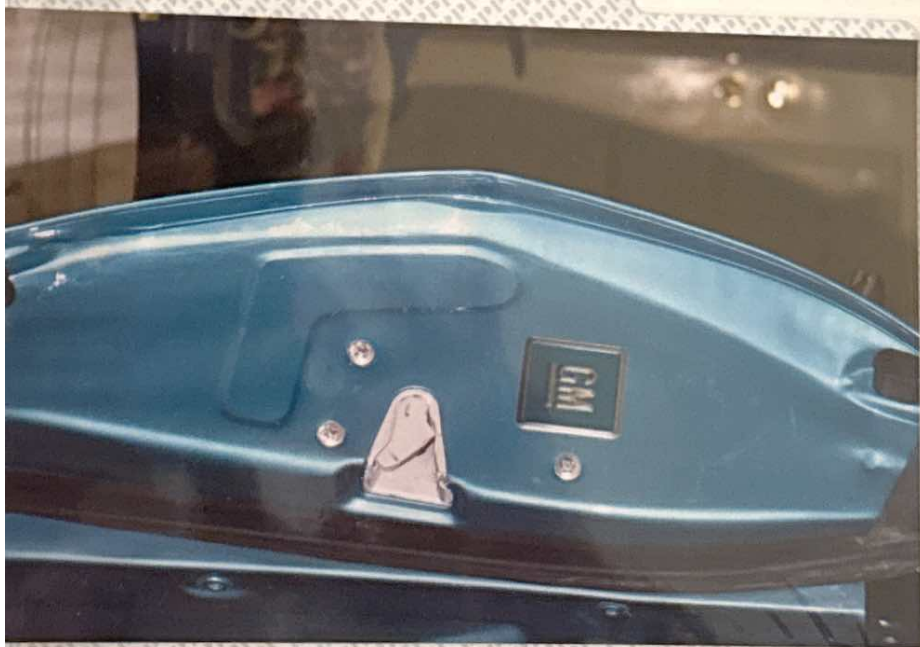


















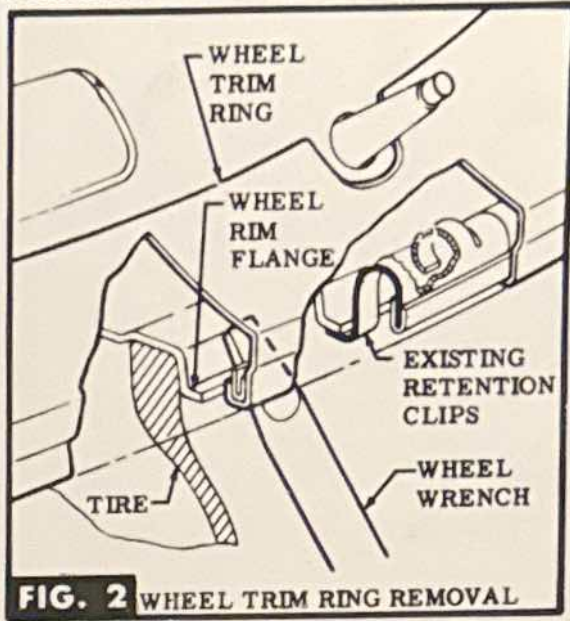
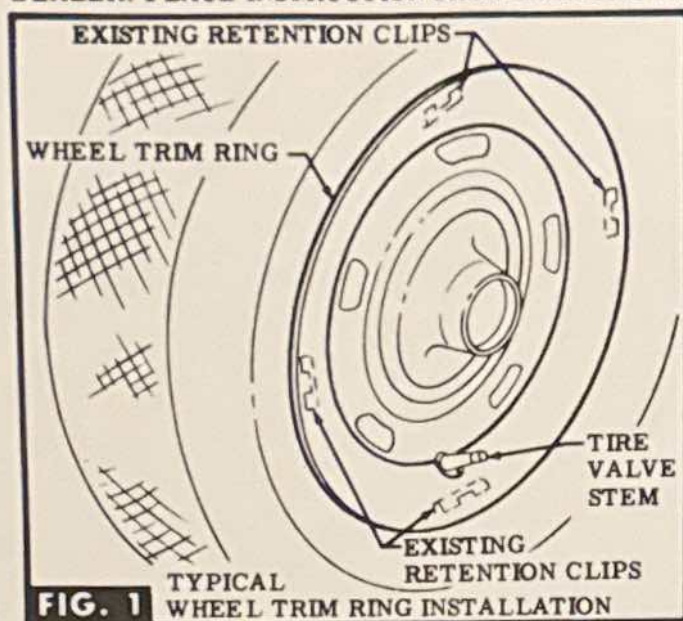


Chevrolet
CAMARO



WHEEL TRIM RING INSTRUCTION SHEET

DEALER: PLACE INSTRUCTION SHEET IN GLOVE COMPARTMENT FOR CUSTOMER INFORMATION.



STEP 1 PLACE WHEEL TRIM RING AGAINST WHEEL SO THAT VALVE STEM PROTRUDES THRU OPENING. SEE FIG. 1. **NOTE** Recommend installation of wheel weights on inside bead of wheel or relocate outside wheel weights, if existing, to clear wheel trim retention clips.

STEP 2 PRESS WHEEL TRIM RING FIRMLY AGAINST WHEEL RIM FLANGE SO RETENTION CLIPS ARE IN CORRECT POSITION ON FLANGE. SEE FIG. 1 & 2.

STEP 3 STRIKE EACH CLIP FIRMLY WITH RUBBER Mallet STARTING AT VALVE

STEM UNTIL CLIPS SNAP ONTO FLANGE. SEE FIG. 2.

WHEEL TRIM RING REMOVAL

STEP 1 INSERT WHEEL WRENCH BETWEEN EDGE OF WHEEL TRIM RING & WHEEL RIM FLANGE NEAR CLIP. PRY-OUT OR TWIST WHEEL WRENCH TO REMOVE RETENTION CLIPS FROM WHEEL RIM FLANGE. REPEAT AT EACH CLIP UNTIL WHEEL TRIM RING IS FREE. SEE FIG. 2.

NOTE Wheel removal can be accomplished without removing trim ring.

PRINTED IN U.S.A.

9-23-66

PART NO. 3913832

INSTRUCTIONS FOR CARE & USE OF SEAT BELTS

NOTE Adjust belt length to suit individual requirement. With belt correctly adjusted, person should not feel the weight of the Buckle Asm. on the abdomen. At no time should the belt allow more than 1 inch forward movement of the body.

NOTE When not in use belts should be carefully laid on seat & kept off the floor.

NOTE Boot lip must install over bracket

CAUTION Do not bleach or redye belts as this may cause severe loss of strength.

CLEAN BELTS WITH CLEANER OR DETERGENT RECOMMENDED FOR NYLON.

BELT INSTALLATION





