

HAUSER & WIRTH

MAX BECKMANN

4 JUNE - 11 JULY 2026
BASEL

ABOUT THE EXHIBITION

Widely regarded as one of the most important painters of the 20th Century, German artist Max Beckmann created a singular position in the history of art through a figurative language of extraordinary psychological depth, resisting categorization within expressionism and new objectivity. Ahead of Art Basel 2026, a dedicated exhibition on the artist—realised in close collaboration with his granddaughter, Mayen Beckmann—will open at the Basel gallery this June.

Shaped by a life lived between two World Wars and culminating in his emigration to the United States in 1947, Beckmann's work bears witness to the psychological intensity and moral fractures of the inter-war period. The exhibition spans the entirety of the artist's career and brings together his brooding social allegories with luminous landscapes and portraits, revealing a tension between intimacy and the brutality of the 20th Century.

[Learn more](#) →





Max Beckmann
Mädchen mit gelber Katze (auf Grau)
(Girl with Yellow Cat (on Gray))
1937
Oil on canvas
76.6 × 58.5 cm / 30 ¹/₈ × 23 in
92 × 73.3 × 6.5 cm / 36 ¹/₄ × 28 ⁷/₈ × 2 ¹/₂ in (framed)
BECKM120103







Max Beckmann
Selbstbildnis, Der Zeichner im Spiegel (MANON)
(Self-Portrait, The Artist in the Mirror (MANON))

1940 December

Pen and pencil on vellum

20.7 × 17.6 cm / 8 1/8 × 6 7/8 in

34 × 28 × 2.5 cm / 13 3/8 × 11 × 1 in (framed)

BECKM147526





Max Beckmann

Kinoaufnahme mit altem König (Film Take with Old King; Big Blend)

1945

Oil on canvas

66 × 70 cm / 26 × 27 ½ in

76.6 × 80.2 × 5.5 cm / 30 ¼ × 31 ⅝ × 2 ¼ in (framed)

BECKM147556



‘He treats the picture plane as if it were a theatrical space,
and we are invited to be an audience complicit in the making
of the production’

—William Kentridge



Max Beckmann

Mars und Venus (Mars and Venus)

1939

Oil on canvas

72.8 × 54.2 cm / 28 ⁵/₈ × 21 ³/₈ in

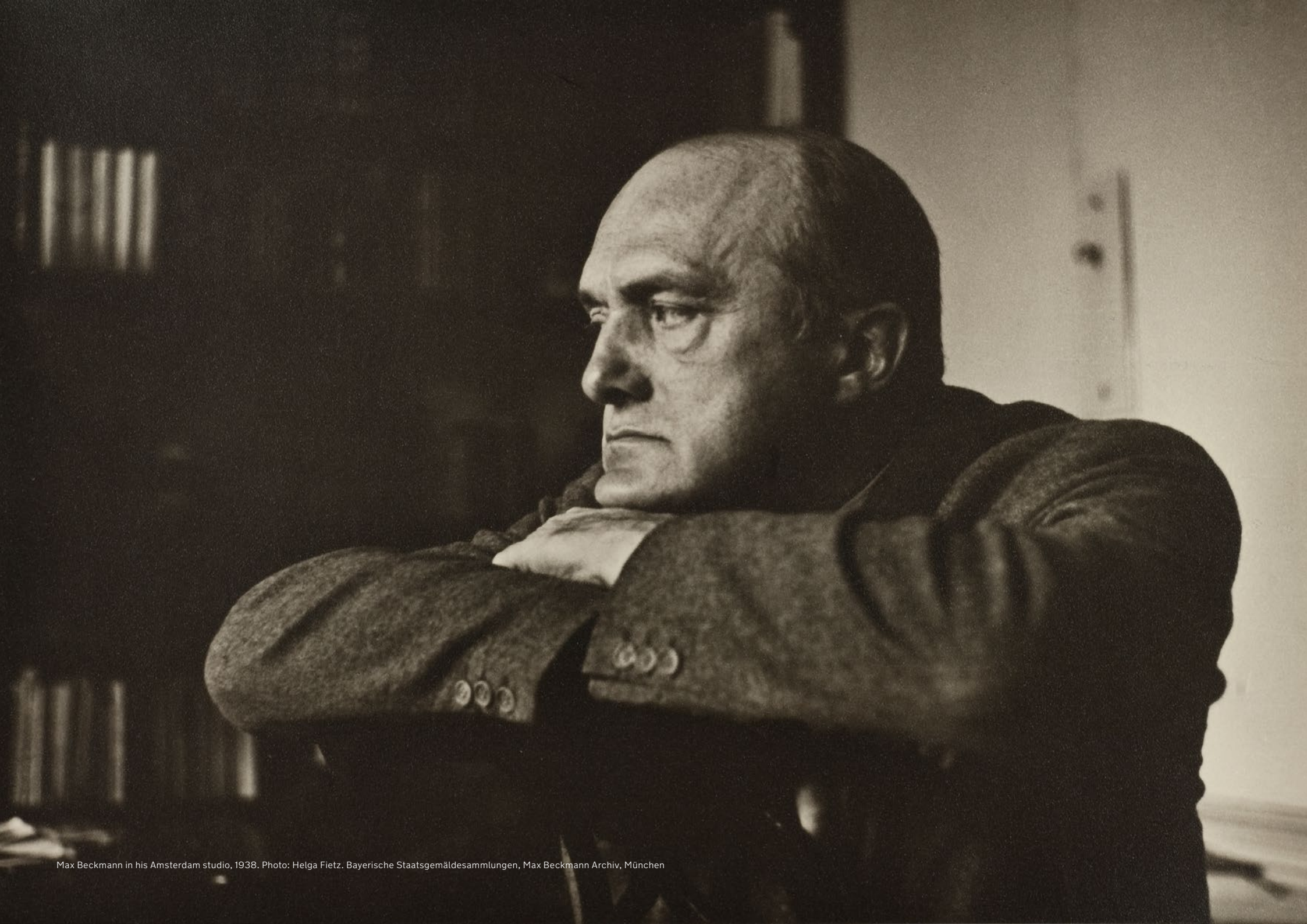
84.7 × 66.4 × 5.5 cm / 33 ³/₈ × 26 ¹/₈ × 2 ¹/₈ in

BECKM145648



Beckman
1951





Max Beckmann in his Amsterdam studio, 1938. Photo: Helga Fietz. Bayerische Staatsgemäldesammlungen, Max Beckmann Archiv, München



Max Beckmann

Sonniges grünes Meer (Sunny Green Sea)

1905

Oil on canvas

81 × 110 cm / 31 ⁷/₈ × 43 ¹/₄ in

100 × 127.5 × 4.9 cm / 39 ³/₈ × 50 ¹/₄ × 1 ⁷/₈ in (framed)

BECKM147589



Y. S. Lee
3.25





Max Beckmann
Bildnis Quappi Beckmann
(Portrait Quappi Beckmann)

1925

Oil on canvas

120 × 50.5 cm / 47 ¼ × 19 7/8 in

130 × 61.5 × 8.5 cm / 51 ½ × 24 ¼ × 3 ⅜ in (framed)

BECKM145646



Mathilde Q. Beckmann am Strand von Rimini, 1927 Bayerische Staatsgemäldesammlungen, Max Beckmann Archiv, München, Max Beckmann Nachlässe



Max Beckmann

Schlafende (Sleeping Woman)

1924

Oil on canvas

48 × 61 cm / 18 7/8 × 24 in

56.5 × 70.5 × 3.4 cm / 22 3/4 × 27 3/4 × 1 3/8 in (framed)

BECKM146084







Max Beckmann

Selbstbildnis mit grünlichem Hintergrund (Self-Portrait with a Greenish Background)

1912

Oil on canvas

46 × 43.5 cm / 18 1/8 × 17 1/8 in

60.4 × 60.3 × 5 cm / 23 3/4 × 23 3/4 × 2 in (framed)

BECKM146787



Max Beckmann

**Nachtstillleben mit Sonnenblumen
(Night Still Life with Sunflowers)**

1943

Oil on canvas

85 × 44.5 cm / 33 ½ × 17 ½ in

101 × 60 × 8 cm / 39 ¾ × 23 ⅝ × 3 ⅛ in (framed)

BECKM147525







Max Beckmann

Nordseelandschaft I (Gewitter) (North Sea Landscape I (Thunderstorm))

1937

Oil on canvas

56.5 × 71.5 cm / 22 ¼ × 28 ½ in

72 × 88.5 × 2 cm / 28 ¾ × 34 ⅞ × ¾ in (framed)

BECKM146247



‘Often in Max Beckmann’s paintings it feels as if the curtain has just gone up and your seeing the behind-the-scenes – everything is in a state of inbetween or something is not quite meant to be revealed – and only a second later the curtain might go down and your like is that really what I saw?’

—Dana Schutz





Max Beckmann

Variété (Variety Show)

1927

Oil on canvas

50.5 × 69.5 cm / 19 ⁷/₈ × 27 ³/₈ in

68.5 × 87 × 5 cm / 27 × 34 ¹/₄ × 2 in (framed)

BECKM146385



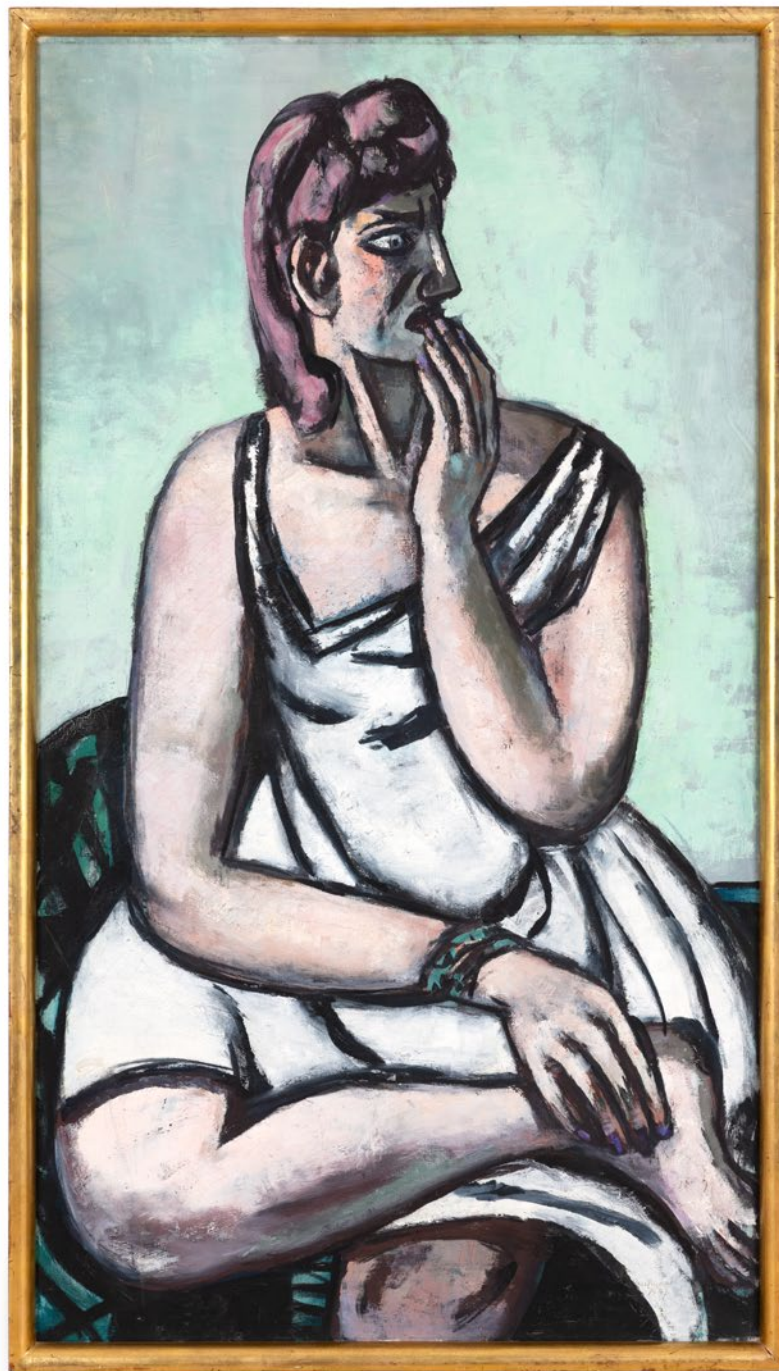
Max Beckmann
Stillleben mit Skulptur (Still Life with Sculpture)
1942
Oil on canvas
45 × 85 cm / 17 ³/₄ × 33 ¹/₂ in
61 × 100 × 6 cm / 24 × 39 ³/₈ × 2 ³/₈ in (framed)
BECKM146788





‘In his middle and late period, his style became much more relaxed, he had mastered the technique yet he let go of it, abandoned it... I’ve already learned it, I should let go of what I’ve forgotten’

—Zeng Fanzhi



Max Beckmann

Die Erschrockene (The Frightened Woman)

1947

Oil on canvas

135 × 75 cm / 53 1/8 × 29 1/2 in

138.5 × 78.5 × 5 cm / 54 1/2 × 30 7/8 × 2 in (framed)

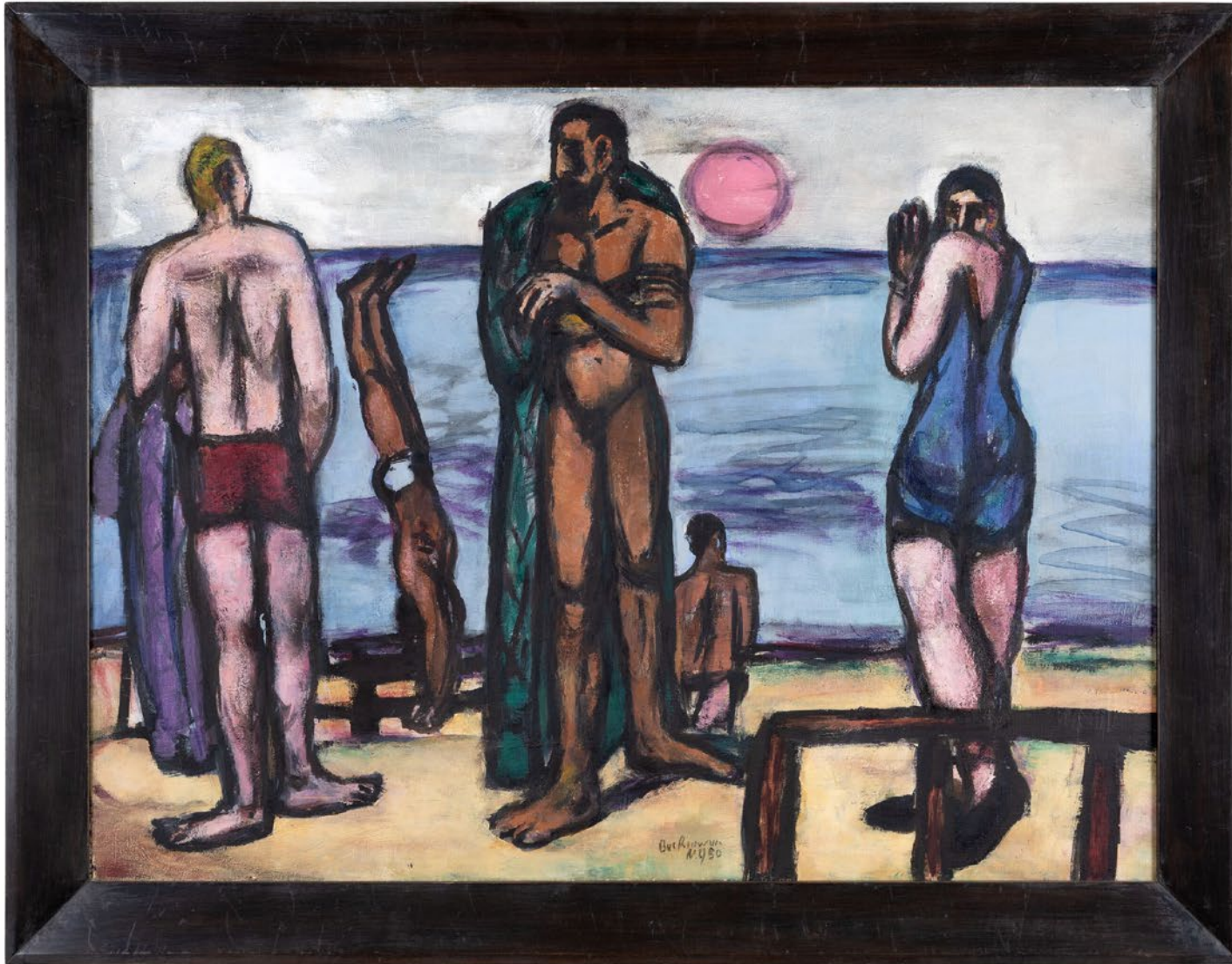
BECKM146087





‘He’s one of those painters you can’t just walk by – I can’t just walk by a Beckmann – I got to stop!’

—Henry Taylor



Max Beckmann

Kleines Bild mit Badenden (Small Painting with Bathers)

1947/1950

Oil on canvas

60 × 80 cm / 23 5/8 × 31 1/2 in

71 × 91.4 × 4.4 cm / 28 × 36 × 1 3/4 in (framed)

BECKM145650



Max Beckmann
Selbstbildnis auf Grün mit grünem Hemd
(Self-Portrait on Green with Green Shirt)

1938
Oil on canvas
65.5 × 50 cm / 25 ³/₄ × 19 ⁵/₈ in
84.5 × 66.5 × 5.5 cm / 33 ¹/₄ × 26 ¹/₈ × 2 ¹/₈ in (framed)
BECKM145647

Lusk
A 39
7. Dezember
für Guppi







ABOVE IMAGE: Mathilde Q. Beckmann, Max Beckmann beim Bad im Meer, Viareggio / Mathilde Q. Beckmann, Max Beckmann bathing in Viareggio, September 1926 Bayerische Staatsgemäldesammlungen, Max Beckmann Archiv, München, Max Beckmann Nachlässe



Max Beckmann

Liegende Frau am Meer (Reclining Woman by the Sea)

1950

Oil on canvas

46 × 61 cm / 18 1/8 × 24 in

BECKM145649





Max Beckmann

Küstenlandschaft mit Ballon (Seashore with Balloon)

1932

Oil on canvas

72.4 × 105.5 cm / 28 ½ × 41 ½ in

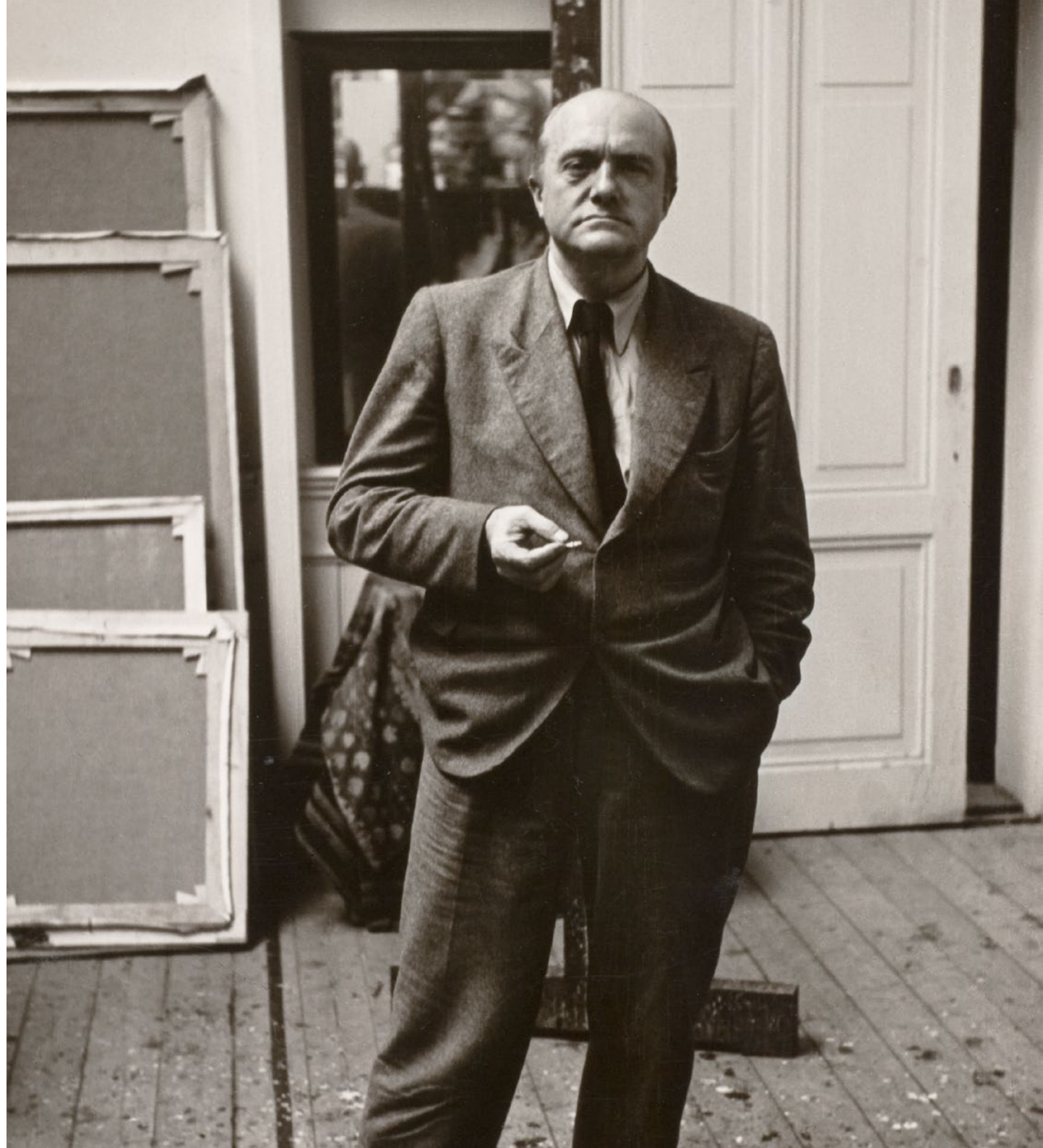
87.5 × 119.5 × 7.5 cm / 34 ½ × 47 × 3 in (framed)

BECKM146386



ABOUT THE ARTIST

Max Beckmann (1884–1950) was a leading German painter and a fiercely individual modern artist whose work bridged tradition and upheaval. Born in Leipzig, he trained in a conservative academic style but soon rejected its limits, developing a bold visual language of compressed space, strong outlines, and symbolic intensity. The trauma of World War I deeply shaped his vision, leading him to depict tense, often crowded scenes that explore human vulnerability and resilience. Though sometimes linked to New Objectivity, he remained independent, drawing on myth, religion, and personal experience. Forced into exile by the Nazi regime, Beckmann continued to paint powerful works reflecting identity and displacement, creating art that challenges viewers to search for meaning within complexity.





HAUSER & WIRTH

THIS EXHIBITION IS ON VIEW AT
LUFTGÄSSLEIN 4, BASEL

HAUSERWIRTH.COM