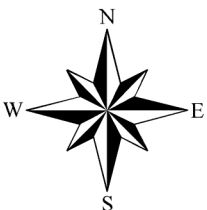


258.5 hectares (638.87 ac.), more or less.

Scale: 1:17,000

N.E. Sec. 8
 Within
 Twp. 72 - Rge. 16 - W. 5M.

Approximately 7 km. to Spirit River Settlement .



Imagery:

Source: Esri, Maxar, GeoEye, Earthstar Geographics, CNES/Airbus DS, USDA, USGS, AeroGRID, IGN, and the GIS User Community

Public Lands Disposition Management
 The Minister and the Crown provides this information without warranty or representation as to any matter including but not limited to whether the data/information is correct, accurate or free from error, defect, danger, or hazard, and whether it is otherwise useful or suitable for any use the user may make of it.

Spatial Reference: NAD 1983 10TM AEP Forest

2/23/2023

TWP. 77

RANGE 7

RANGE 6

WEST 6 MER



24

19

160 ac.

160 ac.

160 ac.

160 ac.

13

18

GRAZING LEASE AREA

= 640.0 Acres (259.00 HA), more or less

SURVEYED ROAD ALLOWANCES NOT INCLUDED WITHIN LEASE

Refer to Appendix "A" for detailed Legal Description

Plan #: **932 SK**

Version: **2007.02.01**

File:

TECHNICAL SERVICES

SKT

RE

© Government of Alberta 2006 All rights reserved.
The Minister and the Crown provides this information without warranty or representation as to any matter including but not limited to whether the data / information is correct, accurate or free from error, defect, damage, or hazard, and whether it is otherwise useful or suitable for any use the user may make of it.

Base Features Data provided by Special Data Warehouse Ltd.

Alberta
SUSTAINABLE RESOURCE DEVELOPMENT

Lands Division

Scale: 1: 20000

Date: 2006 /11 /27

Airphoto : [AS] - Shot(s)

Date: //

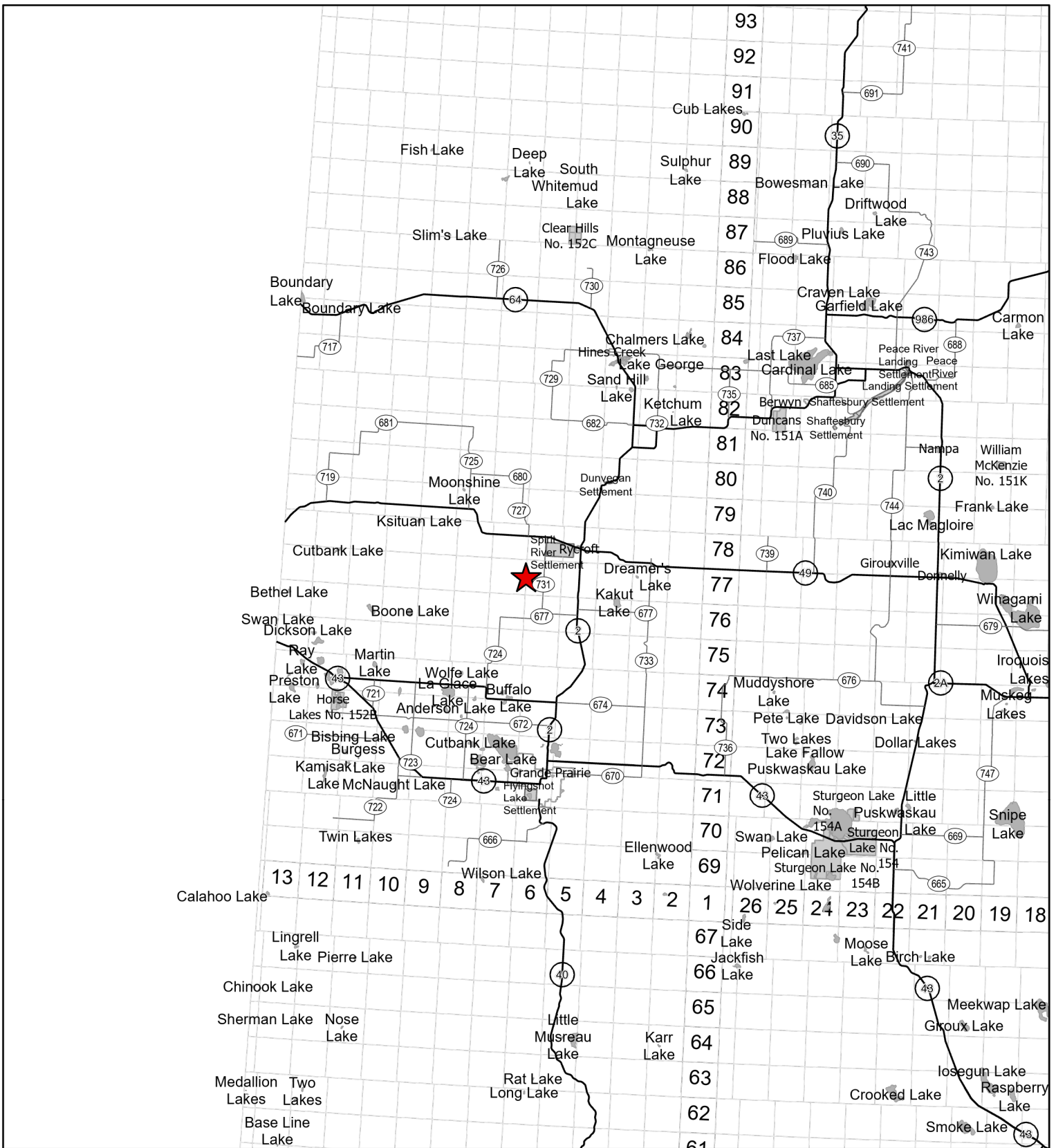
Dwn By : R. EDMONDS

Checked by: *[Signature]*

Graphic File : 39154.dgn

Remarks:

Surveys and Technical Services Section



258.5 hectares (638.87 ac.), more or less.

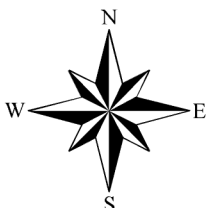
N.E. Sec. 8

Within

Twp.72 - Rge. 16 - W.5M.

Approximately 7 km. to Spirit River Settlement .

Scale: 1:1,440,000



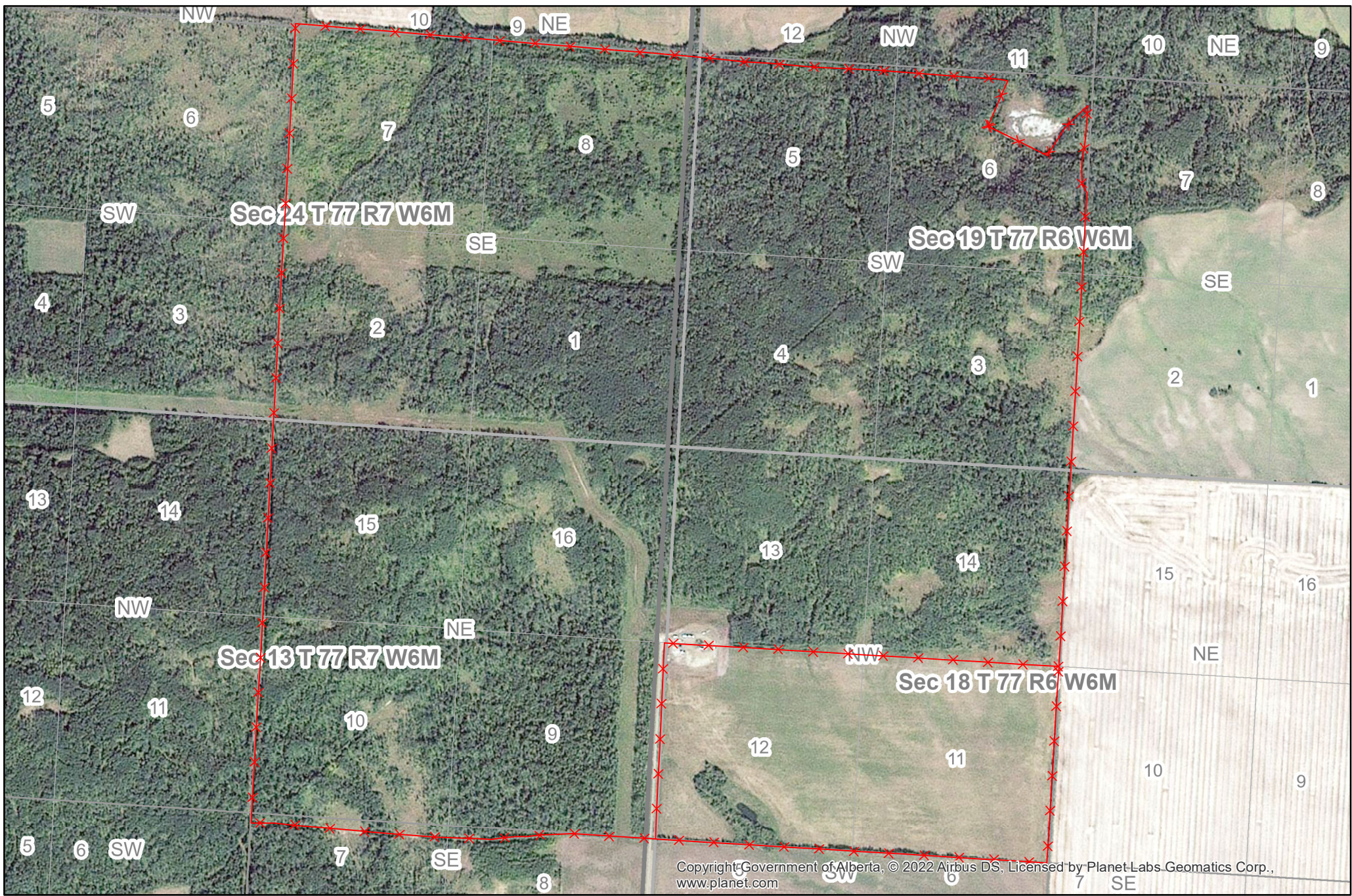
Imagery:

Source: Esri, Maxar, GeoEye, Earthstar Geographics, CNES/Airbus DS, USDA, USGS, AeroGRID, IGN, and the GIS User Community

Public Lands Disposition Management
 The Minister and the Crown provides this information without warranty or representation as to any matter including but not limited to whether the data/information is correct, accurate or free from error, defect, danger, or hazard, and whether it is otherwise useful or suitable for any use the user may make of it.

Spatial Reference: NAD 1983 10TM AEP Forest

2/23/2023



Base Map Data provided by the Government of Alberta under the Alberta Open Government Licence, November, 2014
 Cadastral – Dispositions Data provided by Alberta Data Partnerships
 ©2020 Government of Alberta
 ©2020 Valtus Imagery Services
 The Minister and the Crown provides this information without warranty or representation as to any matter including but not limited to whether the data/information is correct, accurate or free from error, defect, danger, or hazard and whether it is otherwise useful or suitable for any use the user may make of it.

Date: 2/16/2023



Legend

- x PLS210012
- ATS Township Index Outline 8

PLS210012

