

NOW LEASING



RATE SHEET

198 MORNINGTON STREET
STRATFORD

A **bmi** Project

Price List



UNIT #	BEDS	MONTHLY
101	Studio	\$1,450
102	1	\$2,100
103 *	1	\$2,275
104	Studio	\$1,500
105 **	Studio	\$995
106	2	\$2,300
107	1	\$1,550
108	2	\$2,150

UNIT #	BEDS	MONTHLY
201 ***	1	\$3,000
202 ***	1	\$2,400
203 *	1	\$2,300
204	Studio	\$1,550
205	1	\$2,275
206	2	\$2,350
207	2	\$2,200

* Powder room ** Furnished *** Powder room & laundry

FEATURES & AMENITIES

Quiet heritage building in well established and sought after neighbourhood

Located within a 10 minute walk to downtown Stratford

Walking distance to the waterfront and trails

Thoughtfully landscaped grounds and green spaces

Elegant common room with television

Water and heat included - Hydro extra

Air conditioning

Assigned parking spots available

Laundry facilities

Bike storage

Long term lease opportunities

DEPOSIT STRUCTURE:

Last month's rent due upon signing

OCCUPENCY DATE:

Move in as early as November 1, 2024

CONTACT:

Elena Veldman 519-274-4927
Sales@thebmgroupp.ca

NOW LEASING



FLOOR PLANS

198 MORNINGTON STREET
STRATFORD

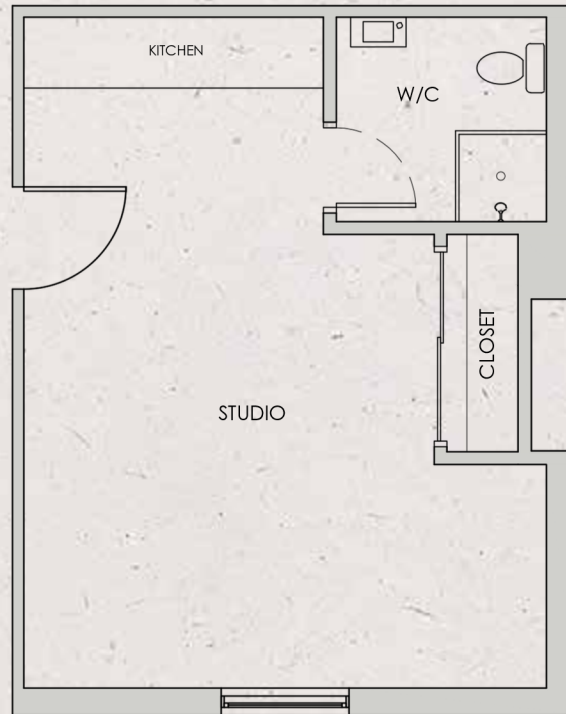
A **bmi** Project



198 Mornington Street
Stratford

UNIT 101
295 sq. ft.

NOW LEASING



assigned parking



laundry facilities

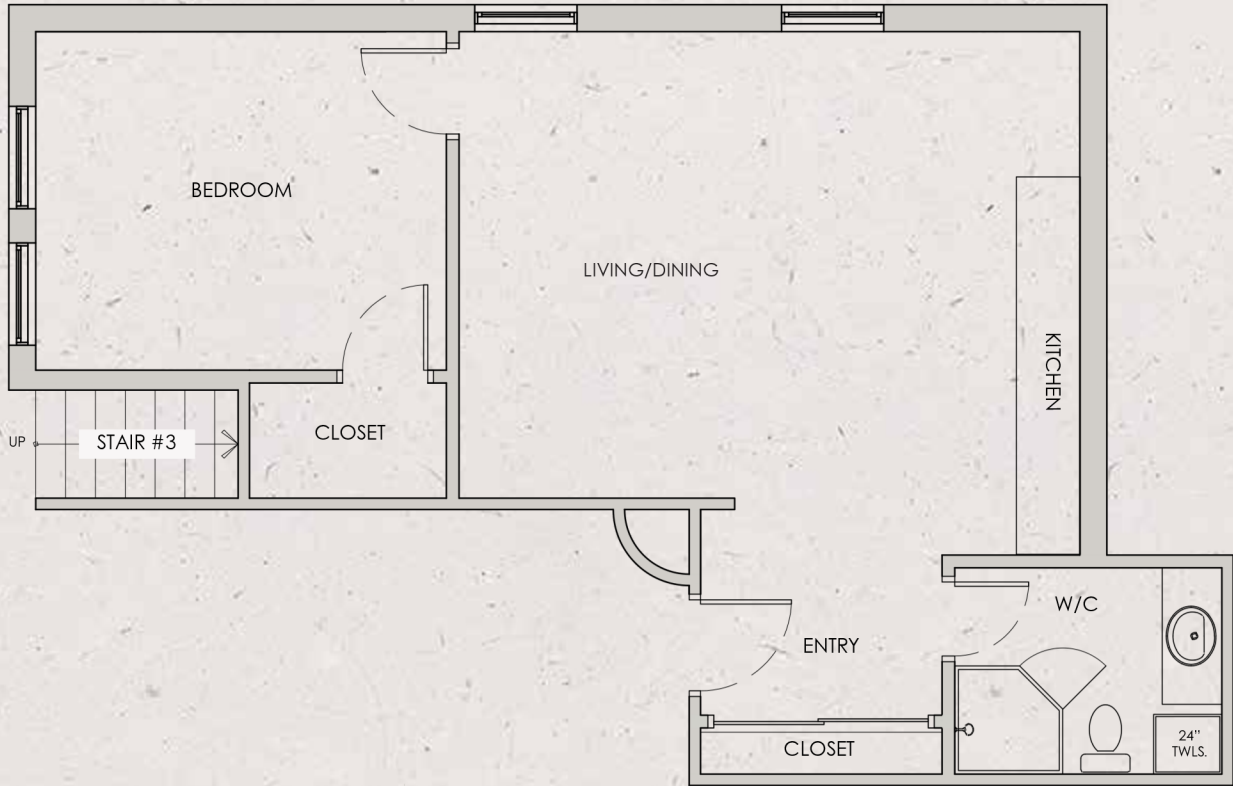
elena@thebmgroupp.ca | (519) 274-4927



198 Mornington Street
Stratford

UNIT 102
510 sq. ft.

NOW LEASING



assigned parking



laundry facilities

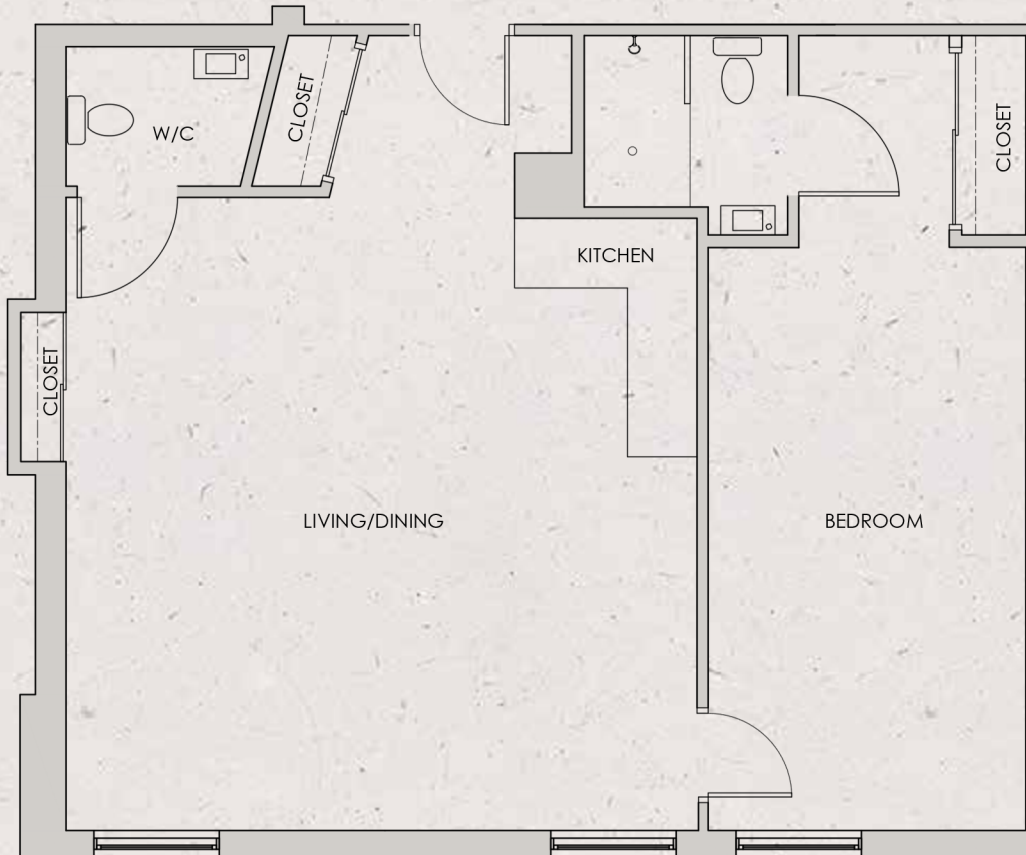
elena@thebmgroupp.ca | (519) 274-4927



198 Mornington Street
Stratford

UNIT 103
686 sq. ft.

NOW LEASING



assigned parking



laundry facilities

elena@thebmgroupp.ca | (519) 274-4927



198 Mornington Street
Stratford

BARRIER FREE

UNIT 104

425 sq. ft.

NOW LEASING



assigned parking



laundry facilities

elena@thebmgroupp.ca | (519) 274-4927



198 Mornington Street
Stratford

UNIT 105
229 sq. ft.

NOW LEASING



assigned parking



laundry facilities

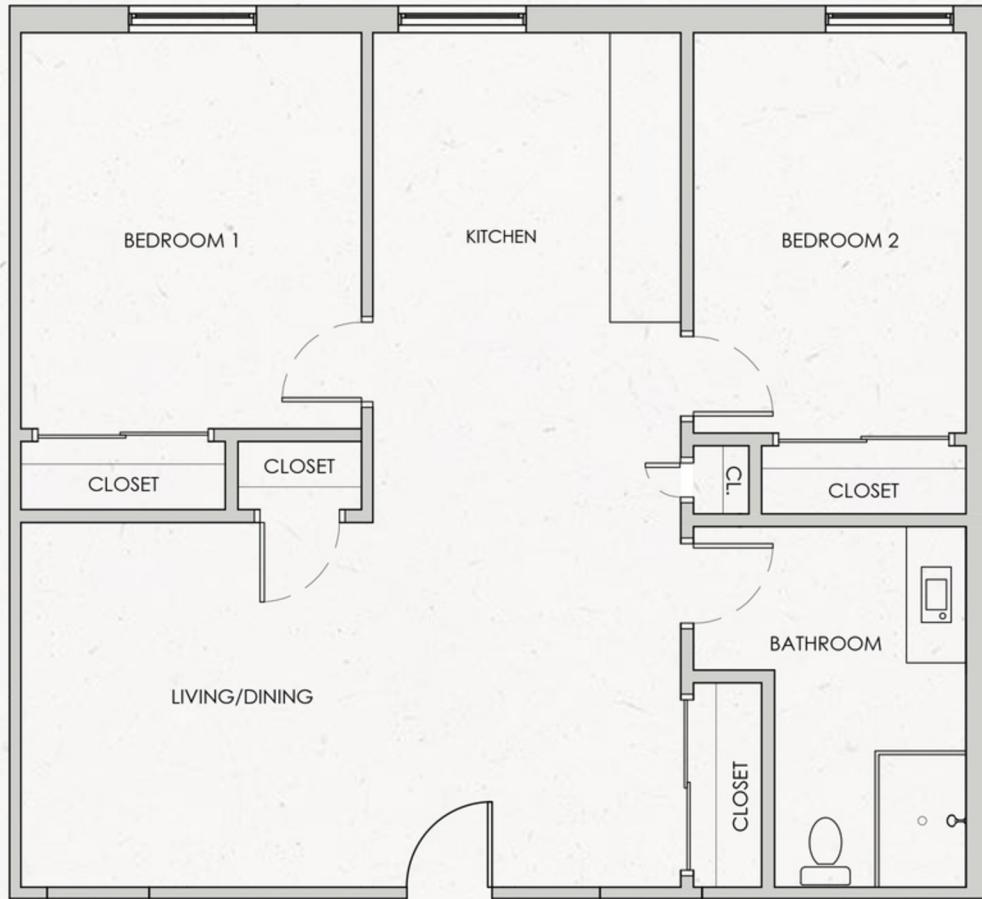
elena@thebmgroupp.ca | (519) 274-4927



198 Mornington Street
Stratford

UNIT 106
695 sq. ft.

NOW LEASING



assigned parking



laundry facilities

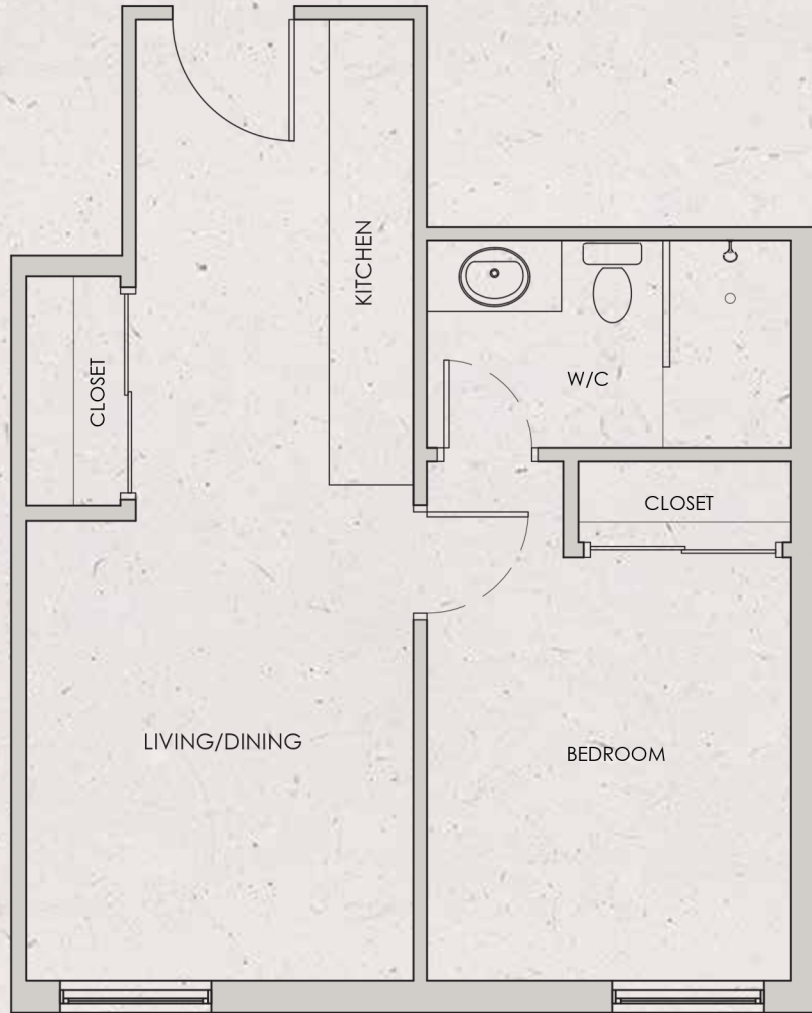
elena@thebmgroupp.ca | (519) 274-4927



198 Mornington Street
Stratford

UNIT 107
381 sq. ft.

NOW LEASING



assigned parking



laundry facilities

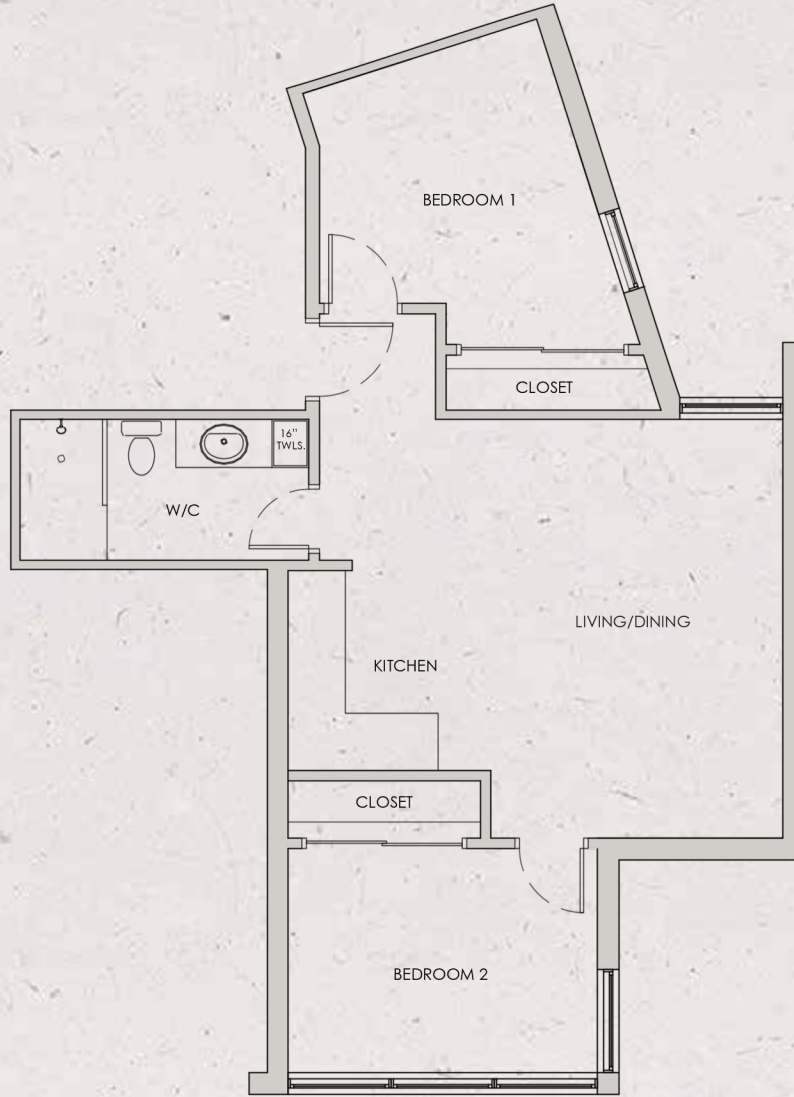
elena@thebmgroupp.ca | (519) 274-4927



198 Mornington Street
Stratford

UNIT 108
559 sq. ft.

NOW LEASING



assigned parking



laundry facilities

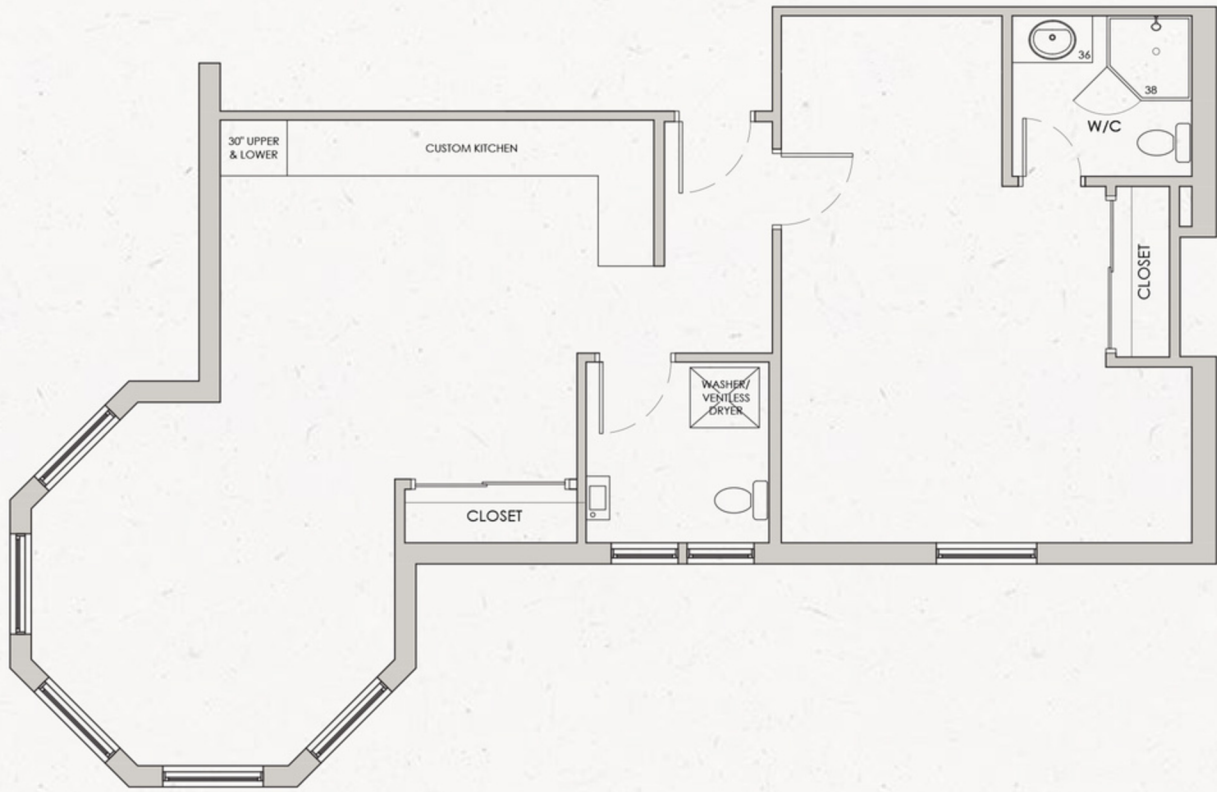
elena@thebmgroupp.ca | (519) 274-4927



198 Mornington Street
Stratford

UNIT 201
759 sq. ft.

NOW LEASING



assigned parking



laundry facilities

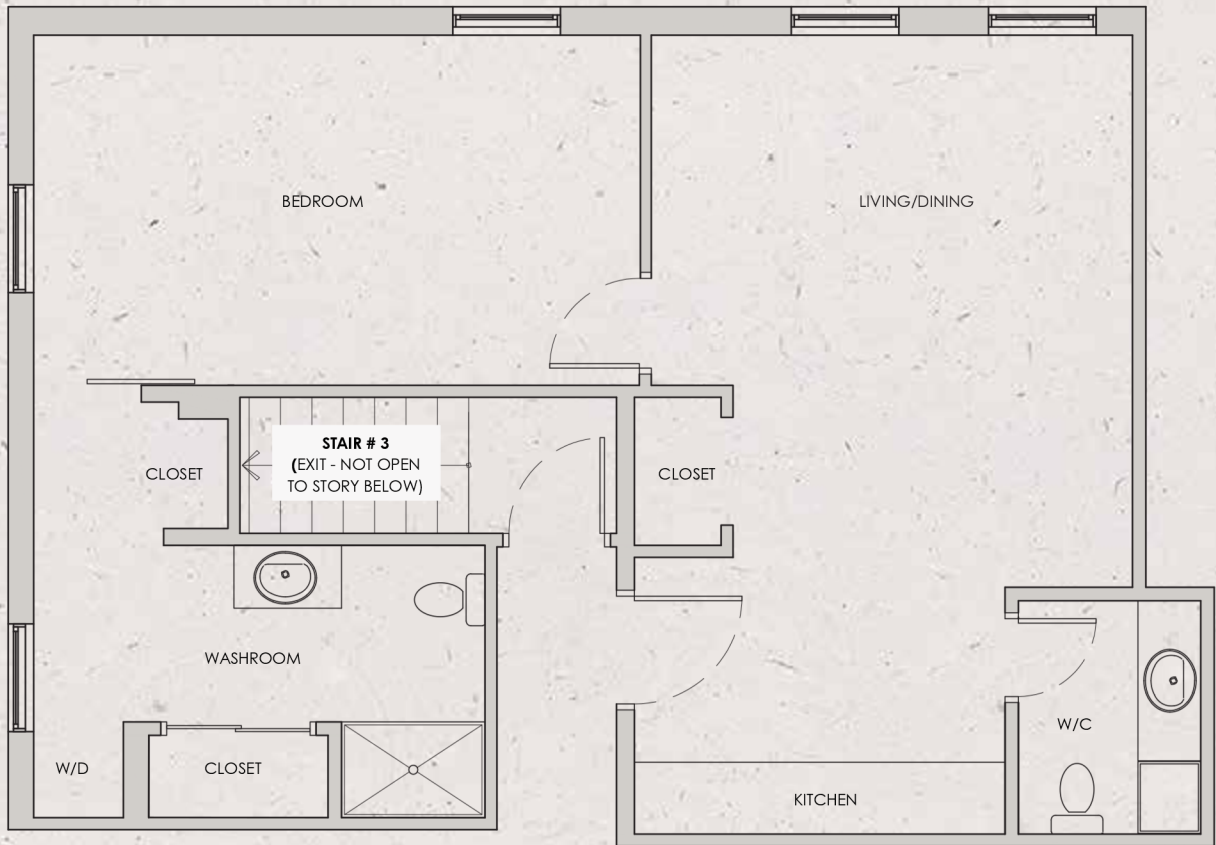
elena@thebmggroup.ca | (519) 274-4927



198 Mornington Street
Stratford

UNIT 202
604 sq. ft.

NOW LEASING



assigned parking



laundry facilities

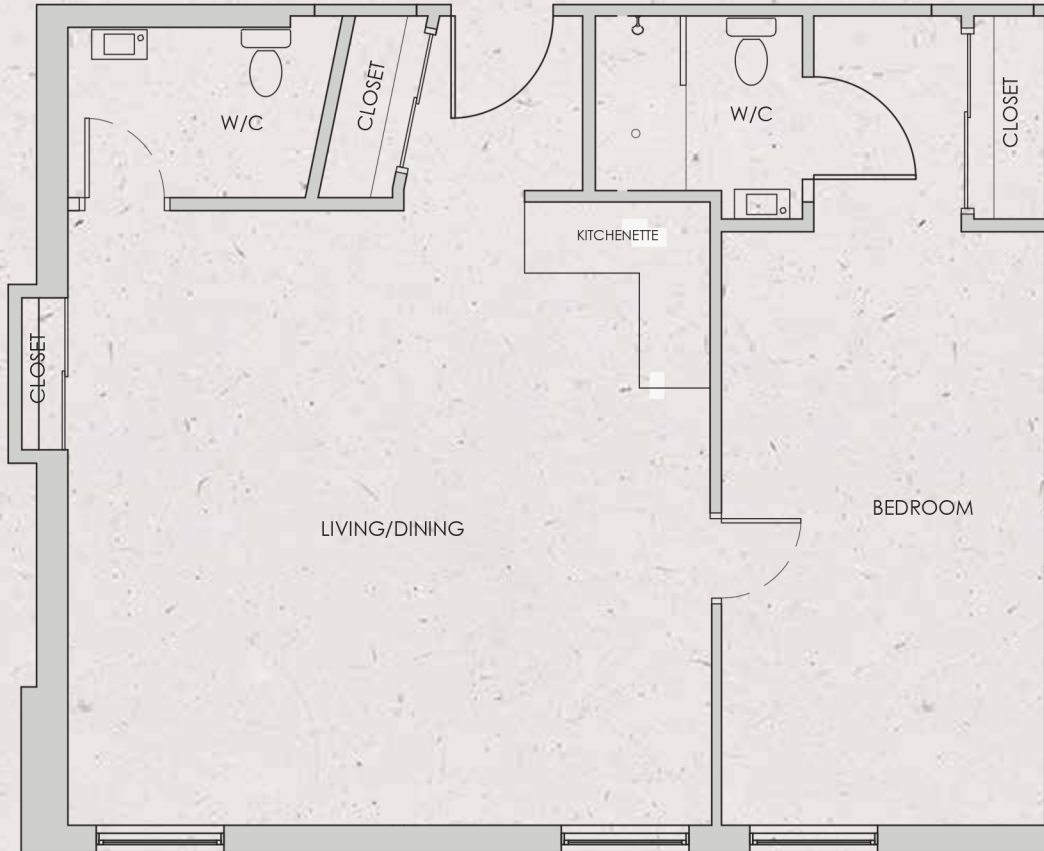
elena@thebmgroupp.ca | (519) 274-4927



198 Mornington Street
Stratford

UNIT 203
685 sq. ft.

NOW LEASING



assigned parking



laundry facilities

elena@thebmgroupp.ca | (519) 274-4927



198 Mornington Street
Stratford

BARRIER FREE

UNIT 204

425 sq. ft.

NOW LEASING



assigned parking



laundry facilities

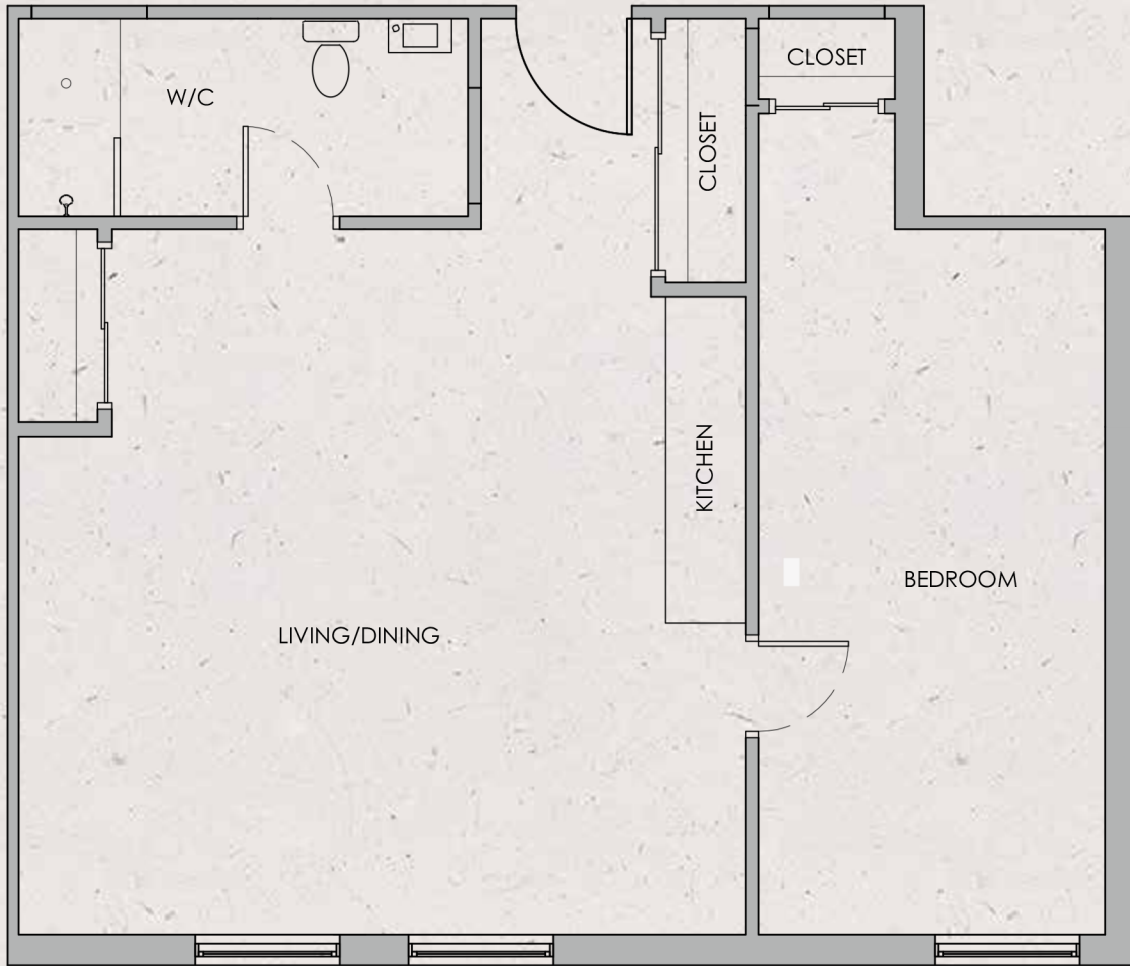
elena@thebmgroupp.ca | (519) 274-4927



198 Mornington Street
Stratford

UNIT 205
640 sq. ft.

NOW LEASING



assigned parking



laundry facilities

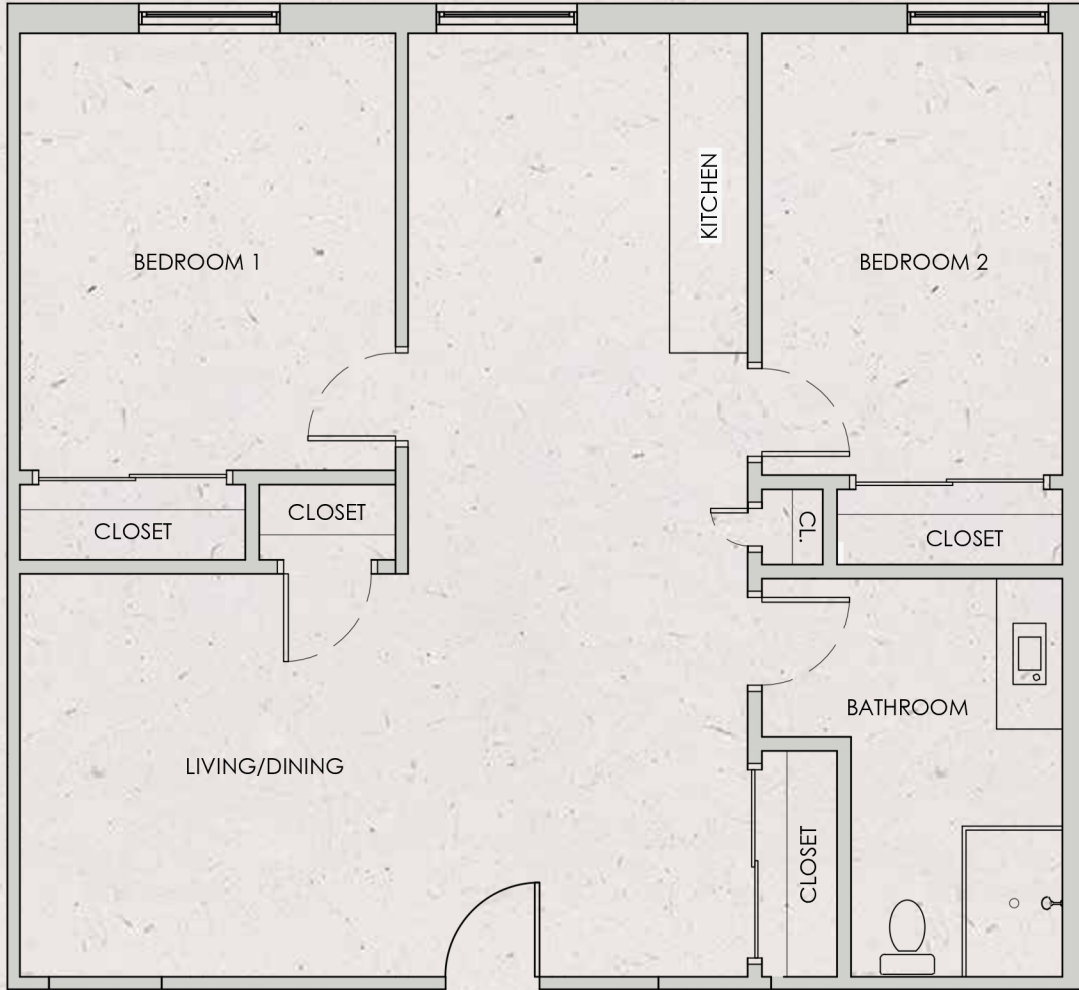
elena@thebmggroup.ca | (519) 274-4927



198 Mornington Street
Stratford

UNIT 206
695 sq. ft.

NOW LEASING



assigned parking



laundry facilities

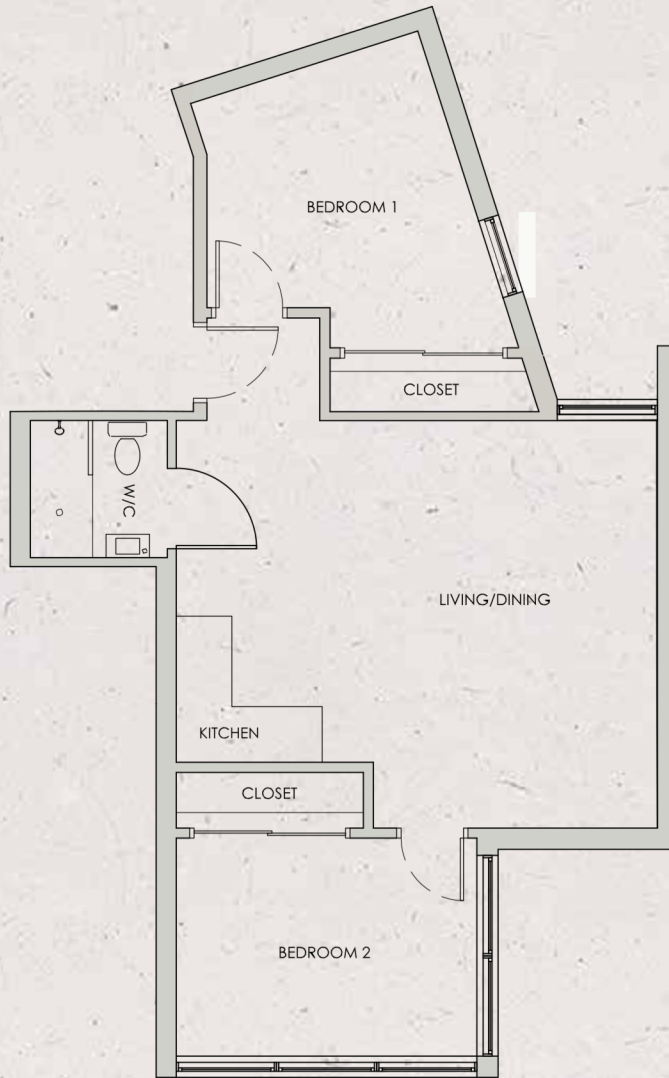
elena@thebmgroupp.ca | (519) 274-4927



198 Mornington Street
Stratford

UNIT 207
510 sq. ft.

NOW LEASING



assigned parking



laundry facilities

elena@thebmggroup.ca | (519) 274-4927

NOW LEASING



FLOOR PLATES

198 MORNINGTON STREET
STRATFORD

A **bmi** Project



198 Mornington Street
Stratford

LEVEL 1

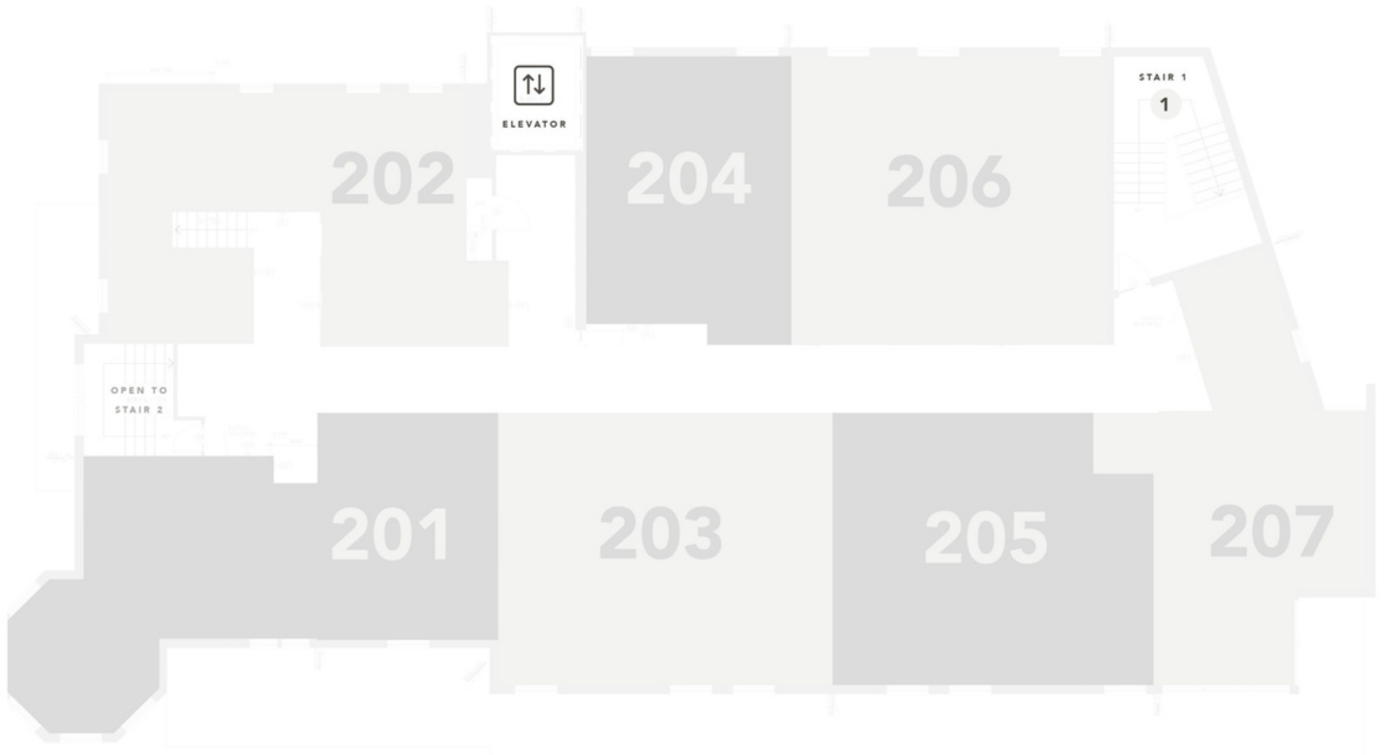
Floor Plate





198 Mornington Street
Stratford

LEVEL 2
Floor Plate





198 Mornington Street
Stratford

BASEMENT

Floor Plate

